

---

**From:** Marc Spijkerbosch  
**Sent:** Friday, 17 January 2020 10:47 am  
**To:** Fred Shilton; Fred Shilton (fred.shilton@wsp-opus.co.nz)  
**Cc:** Mandy Godo  
**Subject:** Hemo roundabout blessing

Hi Fred, trust all's well with you. Welcome to the New Year.

I wonder if you could help us with something.

This is to introduce Mandy (cc'd) who is working on arrangements for the opening ceremony for the sculpture - due to be installed Feb/March.

As a part of observing protocol for this next blessing, she just needs a little more background info around the original blessing of the ground before works began on the roundabout.

Would you be able to tell us a little more about the original ceremony?

I think just dates and those in attendance (who officiated etc) would be really helpful.

We appreciate any help you might be able to give us on this – or maybe point us in the right direction?

Thanks heaps – will be great to finally get the sculpture to the finish line!

Cheers

Marc

---

**Marc Spijkerbosch** *Community Arts Advisor*

P: 07 351 8154

E: marc.spijkerbosch@rotorualc.nz | W: rotorualakescouncil.nz

A: 1061 Haupapa St, Private Bag 3029, Rotorua Mail Centre, Rotorua 3046, New Zealand

**ROTORUA**  
LAKES COUNCIL



---

**From:** Shilton, Fred <fred.shilton@wsp.com>  
**Sent:** Tuesday, 30 June 2020 11:48 am  
**To:** Stewart Brown  
**Cc:** Marc Spijkerbosch  
**Subject:** RE: Hemo Traffic Plan & Beck Hazard Sheet

Thanks Stewart,  
We will take a look at start working through this as well as keep you updated.  
Regards

**Fred Shilton**  
Business Manager - Rotorua



T: +64 7 343 1405  
M: +64 27 499 9356  
fred.shilton@wsp.com

WSP  
1105 Arawa St  
Rotorua 3010  
New Zealand

[wsp.com/nz](http://wsp.com/nz)



Shaping  
the future  
of Aotearoa  
since 1870

---

**From:** Stewart Brown <Stewart.Brown@rotorualc.nz>  
**Sent:** Monday, 29 June 2020 2:51 PM  
**To:** Shilton, Fred <fred.shilton@wsp.com>  
**Cc:** Marc Spijkerbosch <Marc.Spijkerbosch@rotorualc.nz>  
**Subject:** FW: Hemo Traffic Plan & Beck Hazard Sheet

Hi Fred

As discussed

See attached from Kilwell regarding the Hemo sculpture, I think we need to book a number of weekends in case of inclement weather. If you could liaise with Kilwell directly and copy me in that would be great

Thanks

**Stewart Brown** Kaihautū Mahi Toi Arts & Culture Manager, OHU: MAHI TOI - Arts & Culture  
Rotorua Lakes Council P: [07 351 7828](tel:073517828) | E: [stewart.brown@rotorualc.nz](mailto:stewart.brown@rotorualc.nz) | W: [www.rotorualakescouncil.nz](http://www.rotorualakescouncil.nz)

**From:** Craig Wilson <craigw@kilwell.co.nz>  
**Sent:** Monday, 29 June 2020 1:23 PM  
**To:** Stewart Brown <Stewart.Brown@rotorualc.nz>  
**Cc:** Laszlo Kotan <Laszlok@fibretube.co.nz>  
**Subject:** Hemo Traffic Plan & Beck Hazard Sheet

Hi Stewart,

Sorry for the delay I had meant to send this late last week but ran out of time. This is what we had drafted up before lockdown with regards plan & timings for installation. It should give a good start for the Traffic Management plan. I have also included Alan Becks Hazard ID from a flight perspective. At this stage we are looking at the weekend of 29/30 August.

We are also in the process of reapplying for our Local Government Contractor Health & Safety Pre-qualification Scheme – I did apply sometime ago but it has lapsed now and Marc told us early on that we would need to have it if we wanted to work onsite.

Let me know if any questions.

Kind regards

Craig Wilson  
Chief Executive  
Kilwell Sports | Kilwell Fibretube

p: +64 (0)7 345 9094, ext 832 | m: +64 (0)21 233 1190  
f: +64 (0)7 345 5149 | e: [craigw@kilwell.co.nz](mailto:craigw@kilwell.co.nz)  
w: [www.kilwell.co.nz](http://www.kilwell.co.nz) | f: [facebook.com/KilwellSports](https://facebook.com/KilwellSports) | i: [instagram/kilwellsports](https://instagram/kilwellsports)  
w: [www.kilwellfibretube.co.nz](http://www.kilwellfibretube.co.nz) | f: [facebook.com/KilwellFibretube](https://facebook.com/KilwellFibretube)  
490 Te Ngae Road, Rotorua 3010 | Private Bag 3033, Rotorua 3046, New Zealand



The information in this email is confidential. It is intended solely for the addressee, access to this email by anyone else is unauthorized. If you are not the intended recipient, any disclosure, copying, distribution or any action taken or omitted to be taken in reliance on it is prohibited.

---

NOTICE: This communication and any attachments ("this message") may contain information which is privileged, confidential, proprietary or otherwise subject to restricted disclosure under applicable law. This message is for the sole use of the intended recipient(s). Any unauthorized use, disclosure, viewing, copying, alteration, dissemination or distribution of, or reliance on, this message is strictly prohibited. If you have received this message in error, or you are not an authorized or intended recipient, please notify the sender immediately by replying to this message, delete this message and all copies from your e-mail system and destroy any printed copies.

---

**From:** Marc Spijkerbosch  
**Sent:** Tuesday, 28 July 2020 8:55 am  
**To:** 'Shilton, Fred'  
**Subject:** RE: Hemo roundabout concerns

Brilliant, thanks Fred.

**Marc Spijkerbosch** Community Arts Advisor  
P: 07 351 8154 | E: marc.spijkerbosch@rotorualc.nz | W: rotorualakescouncil.nz

**From:** Shilton, Fred <fred.shilton@wsp.com>  
**Sent:** Tuesday, 28 July 2020 8:52 AM  
**To:** Marc Spijkerbosch <Marc.Spijkerbosch@rotorualc.nz>  
**Subject:** [SUSPICIOUS MESSAGE] RE: Hemo roundabout concerns

**This Message contains suspicious characteristics and has originated outside your organization.**

---

Hi Marc,  
I was talking to Chris yesterday and have sent him a draft plan regarding the traffic management/road closure. I will follow up with him today, we are talking to a couple of contractors regarding the provision of the traffic management for this, hopefully hear back from them soon.  
Cheers

**Fred Shilton**  
Business Manager - Rotorua



T: +64 7 343 1405  
M: +64 27 499 9356  
[fred.shilton@wsp.com](mailto:fred.shilton@wsp.com)

WSP  
1105 Arawa St  
Rotorua 3010  
New Zealand

[wsp.com/nz](http://wsp.com/nz)



Shaping  
the future  
of Aotearoa  
since 1870

---

**From:** Marc Spijkerbosch <Marc.Spijkerbosch@rotorualc.nz>  
**Sent:** Tuesday, 28 July 2020 8:43 AM  
**To:** Shilton, Fred <fred.shilton@wsp.com>; Shilton, Fred <fred.shilton@wsp.com>  
**Subject:** FW: Hemo roundabout concerns

Hi Fred, trust all's well

Thanks for helping us out with the TMP. I had a chat with Stewart yesterday, he's asked me to forward this on to you.  
Can you make contact with Chris (as below)?  
Thanks again, we really appreciate all your help  
Cheers  
Marc

**Marc Spijkerbosch** Community Arts Advisor  
P: 07 351 8154 | E: marc.spijkerbosch@rotorualc.nz | W: rotorualakescouncil.nz

---

**From:** Chris Farnsworth <Chris.Farnsworth@nzta.govt.nz>  
**Sent:** Monday, 27 July 2020 11:30 AM  
**To:** Marc Spijkerbosch <Marc.Spijkerbosch@rotorualc.nz>  
**Subject:** RE: Hemo roundabout concerns

Hi Marc  
I was looking at covering the on-ground TMP – just need to see a plan/quote so I can try and get it into the system.

Would like to see a draft ASAP so I can make sure it doesn't get stopped. Don't want this to be a 'submission and review' process we need NZTA on board at the outset.

Thanks,

**Chris Farnsworth** / Senior Project Manager  
Transport Services  
DDI 64 7 927 6017 / M 64 21 612 136  
E [chris.farnsworth@nzta.govt.nz](mailto:chris.farnsworth@nzta.govt.nz) / W [nzta.govt.nz](http://nzta.govt.nz)

---

**From:** Marc Spijkerbosch <Marc.Spijkerbosch@rotorualc.nz>  
**Sent:** Monday, 27 July 2020 10:48 AM  
**To:** Chris Farnsworth <Chris.Farnsworth@nzta.govt.nz>  
**Subject:** RE: Hemo roundabout concerns

Hi Chris  
Just an update on this – I understand the helicopter is tentatively booked for the 30<sup>th</sup> August.  
Fred Shilton has put the TMP together and is talking to a couple of contractors to see about implementing this. I know you mentioned the Hemo project budgets have been closed off – but I've been asked to just double check see if is this an area where NZTA might still be able to help?

Time-wise I realise we're cutting things a bit fine for that first proposed install date ... but looks like we'll finally have the wheels in motion for around this time.  
Finger's crossed.  
Cheers  
Marc

**Marc Spijkerbosch** Community Arts Advisor  
P: 07 351 8154 | E: marc.spijkerbosch@rotorualc.nz | W: rotorualakescouncil.nz

---

**From:** Chris Farnsworth <Chris.Farnsworth@nzta.govt.nz>  
**Sent:** Sunday, 19 July 2020 8:38 PM  
**To:** Marc Spijkerbosch <Marc.Spijkerbosch@rotorualc.nz>  
**Subject:** Re: Hemo roundabout concerns

Hi Marc

Yes roll overs are on the outside, not inwards. But with the amount of crash sites I've been to drivers can do some special things and get into some unexpected places, although it would be highly unlikely to hit the centre.

I still havent seen a traffic management plan for install.

Also remember that NZTA wants 4+weeks for notification/advertising of any highway closure that is not emergency works.

Chris

Get [Outlook for Android](#)

---

**From:** Marc Spijkerbosch <Marc.Spijkerbosch@rotorualc.nz>

**Sent:** Wednesday, July 15, 2020 10:55:45 AM

**To:** Chris Farnsworth <Chris.Farnsworth@nzta.govt.nz>

**Subject:** Hemo roundabout concerns

Hi Chris

Was a bit of a worry to see another truck trailer tip over on the Hemo roundabout last weekend.

I guess the camber means a load will most likely spill outwards, but I've since been asked to just check in and see that NZTA is confident the sculpture will be safe.

We're only weeks away from installation and it obviously represents quite an investment for a number of parties – so just wanted to allay any concerns about risk or vulnerability here. As you can imagine it's quite irreplaceable!

Thanks heaps, look forward your thoughts

Cheers

Marc

---

**Marc Spijkerbosch** *Community Arts Advisor*

**P:** 07 351 8154

**E:** marc.spijkerbosch@rotorualc.nz | **W:** rotorualakescouncil.nz

**A:** 1061 Haupapa St, Private Bag 3029, Rotorua Mail Centre, Rotorua 3046, New Zealand

---



---

NOTICE: This communication and any attachments ("this message") may contain information which is privileged, confidential, proprietary or otherwise subject to restricted disclosure under applicable law. This message is for the sole use of the intended recipient(s). Any unauthorized use, disclosure, viewing, copying, alteration, dissemination or distribution of, or reliance on, this message is strictly prohibited. If you have received this message in error, or you are not an authorized or intended recipient, please notify the sender immediately by replying to this message, delete this message and all copies from your e-mail system and destroy any printed copies.





---

**From:** Shilton, Fred <fred.shilton@wsp.com>  
**Sent:** Friday, 31 July 2020 12:06 pm  
**To:** Marc Spijkerbosch  
**Subject:** FW: Hemo TMP

Here is the date Stewart had given me, I need to check with our guys where the other backup dates came from for the following two weekends.

**Fred Shilton**  
Business Manager - Rotorua



T: +64 7 343 1405  
M: +64 27 499 9356  
fred.shilton@wsp.com

WSP  
1105 Arawa St  
Rotorua 3010  
New Zealand

[wsp.com/nz](http://wsp.com/nz)



Shaping  
the future  
of Aotearoa  
since 1870

---

**From:** Stewart Brown <Stewart.Brown@rotorualc.nz>  
**Sent:** Thursday, 23 July 2020 11:00 AM  
**To:** Shilton, Fred <fred.shilton@wsp.com>  
**Subject:** RE: Hemo TMP

Hi Fred,

The helicopter is tentatively booked for Sunday 30<sup>th</sup> August (subject to weather), I believe NZTA need 4 weeks' notice to close a state highway. Can you confirm we can make this date please?

Cheers

**Stewart Brown** Kaihautū Mahi Toi Arts & Culture Manager, OHU: MAHI TOI - Arts & Culture  
Rotorua Lakes Council P: 07 351 7828 | E: [stewart.brown@rotorualc.nz](mailto:stewart.brown@rotorualc.nz) | W: [www.rotorualakescouncil.nz](http://www.rotorualakescouncil.nz)

---

**From:** Shilton, Fred <fred.shilton@wsp.com>  
**Sent:** Monday, 20 July 2020 11:50 AM  
**To:** Stewart Brown <Stewart.Brown@rotorualc.nz>  
**Subject:** RE: Hemo TMP

Hi Stewart,

We were connecting with a provider on developing this and looking to see if we could get them on board also. I will find out where it is at and get back to you.

Fred

**Fred Shilton**

Business Manager - Rotorua



T: +64 7 343 1405

M: +64 27 499 9356

[fred.shilton@wsp.com](mailto:fred.shilton@wsp.com)

WSP

1105 Arawa St

Rotorua 3010

New Zealand

[wsp.com/nz](http://wsp.com/nz)



Shaping  
the future  
of Aotearoa  
since 1870

---

**From:** Stewart Brown <[Stewart.Brown@rotorualc.nz](mailto:Stewart.Brown@rotorualc.nz)>

**Sent:** Tuesday, 14 July 2020 11:12 AM

**To:** Shilton, Fred <[fred.shilton@wsp.com](mailto:fred.shilton@wsp.com)>

**Subject:** Hemo TMP

Hi Fred, do you have a bit of an update on progress for the sculpture?

Cheers

Stewart

---

**ROTORUA  
LAKES COUNCIL**

**Stewart Brown - Kaihautū Mahi Toi - Manager Arts & Culture |**

**Ohu Mahi Toi - Arts & Culture**

**Waea:** [07 3517828](tel:073517828) | **Waea Pūkoro:** [021588080](tel:021588080)

**Īmera:** [stewart.brown@rotorualc.nz](mailto:stewart.brown@rotorualc.nz) | **Ipurangi:** [rotorualakescouncil.nz](http://rotorualakescouncil.nz)

**Taunga:** 1106 Arawa St, Private Bag 3029, Rotorua Mail Centre, Rotorua 3046, New Zealand

---

NOTICE: This communication and any attachments ("this message") may contain information which is privileged, confidential, proprietary or otherwise subject to restricted disclosure under applicable law. This message is for the sole use of the intended recipient(s). Any unauthorized use, disclosure, viewing, copying, alteration, dissemination or distribution of, or reliance on, this message is strictly prohibited. If you have received this message in error, or you are not an authorized or intended recipient, please notify the sender immediately by replying to this message, delete this message and all copies from your e-mail system and destroy any printed copies.

---

**From:** Shilton, Fred <fred.shilton@wsp.com>  
**Sent:** Tuesday, 4 August 2020 11:50 am  
**To:** Marc Spijkerbosch; Mandy Godo  
**Cc:** Rachel Green; Stewart Brown  
**Subject:** RE: Hemo TMP

Hi Marc,  
Yes Bryan has spoke to TMNZ, they can help out at a cost. I am still waiting to hear back from FH and Higgins regarding them suppling traffic Management in kind, if they are unable then RLC can decide who to proceed with.  
Regards

**Fred Shilton**  
Business Manager - Rotorua



T: +64 7 343 1405  
M: +64 27 499 9356  
fred.shilton@wsp.com

WSP  
1105 Arawa St  
Rotorua 3010  
New Zealand

[wsp.com/nz](http://wsp.com/nz)



Shaping  
the future  
of Aotearoa  
since 1870

---

**From:** Marc Spijkerbosch <Marc.Spijkerbosch@rotorualc.nz>  
**Sent:** Tuesday, 4 August 2020 10:17 AM  
**To:** Mandy Godo  
**Cc:** Rachel Green  
**Subject:** RE: Hemo TMP

Shilton, Fred <fred.shilton@wsp.com>  
Stewart Brown <Stewart.Brown@rotorualc.nz>

Thanks Mandy  
Good idea to touch base with VR.

Sorry to hear Ron's unable to help us out on this one. Fred, has Brian been in touch with TMNZ as yet?

**Marc Spijkerbosch** Community Arts Advisor  
P: 07 351 8154 | E: marc.spijkerbosch@rotorualc.nz | W: rotorualakescouncil.nz

---

**From:** Mandy Godo  
**Sent:** Tuesday, 4 August 2020 10:08 AM  
**To:** Marc Spijkerbosch <Marc.Spijkerbosch@rotorualc.nz>; 'Shilton, Fred' <fred.shilton@wsp.com>



---

**From:** Shilton, Fred <fred.shilton@wsp.com>  
**Sent:** Friday, 31 July 2020 2:12 PM  
**To:** Marc Spijkerbosch <Marc.Spijkerbosch@rotorualc.nz>  
**Cc:** Stewart Brown <Stewart.Brown@rotorualc.nz>  
**Subject:** RE: Hemo TMP

Hi Marc,

These are the dates we had which we got from Kilwell below and attached a copy of a plan showing how far the 200m exclusion zone will be with Traffic Management Plan .

"The installation is currently programmed for 29-30 August with backup days on 5-6 and 12-13 September. Attached is the installation / flight programme, Hazard ID and a quick site plan showing the 200m ditch zone and stop go locations."

We will have the TMP with Higgins today for approval while we try to arrange someone to implement. Council will need to manage the public notification of the Event and the event itself which the Traffic Management will feed into. Higgins have said that they want the work all complete by 10am in the morning so will be an early start.

Regards

**Fred Shilton**  
Business Manager - Rotorua



T: +64 7 343 1405  
M: +64 27 499 9356  
fred.shilton@wsp.com

WSP  
1105 Arawa St  
Rotorua 3010  
New Zealand

[wsp.com/nz](http://wsp.com/nz)



Shaping  
the future  
of Aotearoa  
since 1870

---

**From:** Marc Spijkerbosch <Marc.Spijkerbosch@rotorualc.nz>  
**Sent:** Friday, 31 July 2020 12:08 PM  
**To:** Shilton, Fred <fred.shilton@wsp.com>  
**Subject:** RE: Hemo TMP

Thanks Fred

The 23<sup>rd</sup> and 30<sup>th</sup> the only dates I have record of here

**Marc Spijkerbosch** Community Arts Advisor  
P: 07 351 8154 | E: marc.spijkerbosch@rotorualc.nz | W: rotorualakescouncil.nz

---

**From:** Shilton, Fred <fred.shilton@wsp.com>  
**Sent:** Friday, 31 July 2020 12:06 PM  
**To:** Marc Spijkerbosch <Marc.Spijkerbosch@rotorualc.nz>  
**Subject:** FW: Hemo TMP

Here is the date Stewart had given me, I need to check with our guys where the other backup dates came from for the following two weekends.

**Fred Shilton**  
Business Manager - Rotorua



T: +64 7 343 1405  
M: +64 27 499 9356  
[fred.shilton@wsp.com](mailto:fred.shilton@wsp.com)

WSP  
1105 Arawa St  
Rotorua 3010  
New Zealand

[wsp.com/nz](http://wsp.com/nz)



Shaping  
the future  
of Aotearoa  
since 1870

---

**From:** Stewart Brown <[Stewart.Brown@rotorualc.nz](mailto:Stewart.Brown@rotorualc.nz)>  
**Sent:** Thursday, 23 July 2020 11:00 AM  
**To:** Shilton, Fred <[fred.shilton@wsp.com](mailto:fred.shilton@wsp.com)>  
**Subject:** RE: Hemo TMP

Hi Fred,

The helicopter is tentatively booked for Sunday 30<sup>th</sup> August (subject to weather), I believe NZTA need 4 weeks' notice to close a state highway. Can you confirm we can make this date please?

Cheers

**Stewart Brown** Kaihautū Mahi Toi Arts & Culture Manager, OHU: MAHI TOI - Arts & Culture  
Rotorua Lakes Council P: [07 351 7828](tel:073517828) | E: [stewart.brown@rotorualc.nz](mailto:stewart.brown@rotorualc.nz) | W: [www.rotorualakescouncil.nz](http://www.rotorualakescouncil.nz)

---

**From:** Shilton, Fred <[fred.shilton@wsp.com](mailto:fred.shilton@wsp.com)>  
**Sent:** Monday, 20 July 2020 11:50 AM  
**To:** Stewart Brown <[Stewart.Brown@rotorualc.nz](mailto:Stewart.Brown@rotorualc.nz)>  
**Subject:** RE: Hemo TMP

Hi Stewart,

We were connecting with a provider on developing this and looking to see if we could get them on board also. I will find out where it is at and get back to you.

Fred

**Fred Shilton**  
Business Manager - Rotorua



T: +64 7 343 1405  
M: +64 27 499 9356  
[fred.shilton@wsp.com](mailto:fred.shilton@wsp.com)

WSP  
1105 Arawa St  
Rotorua 3010  
New Zealand

[wsp.com/nz](http://wsp.com/nz)



Shaping  
the future  
of Aotearoa  
since 1870

**From:** Stewart Brown <[Stewart.Brown@rotorualc.nz](mailto:Stewart.Brown@rotorualc.nz)>  
**Sent:** Tuesday, 14 July 2020 11:12 AM  
**To:** Shilton, Fred <[fred.shilton@wsp.com](mailto:fred.shilton@wsp.com)>  
**Subject:** Hemo TMP

Hi Fred, do you have a bit of an update on progress for the sculpture?

Cheers

Stewart

---

**ROTORUA**  
**LAKES COUNCIL**

**Stewart Brown - Kaihautū Mahi Toi - Manager Arts & Culture |**

***Ohu Mahi Toi* - Arts & Culture**

**Waea:** 07 3517828 | **Waea Pūkoro:** 021588080

**Īmera:** [stewart.brown@rotorualc.nz](mailto:stewart.brown@rotorualc.nz) | **Ipurangi:** [rotorualakescouncil.nz](http://rotorualakescouncil.nz)

**Taunga:** 1106 Arawa St, Private Bag 3029, Rotorua Mail Centre, Rotorua 3046, New Zealand

---

NOTICE: This communication and any attachments ("this message") may contain information which is privileged, confidential, proprietary or otherwise subject to restricted disclosure under applicable law. This message is for the sole use of the intended recipient(s). Any unauthorized use, disclosure, viewing, copying, alteration, dissemination or distribution of, or reliance on, this message is strictly prohibited. If you have received this message in error, or you are not an authorized or intended recipient, please notify the sender immediately by replying to this message, delete this message and all copies from your e-mail system and destroy any printed copies.





---

**From:** Marc Spijkerbosch  
**Sent:** Wednesday, 5 August 2020 11:40 am  
**To:** 'Shilton, Fred'; Mandy Godo  
**Cc:** Rachel Green; Stewart Brown  
**Subject:** RE: Hemo TMP

Thanks Fred

Wonder if it might be a good idea to pencil in TMNZ for those dates. If the in-kind support doesn't happen then at least we're covered.

We're meeting tomorrow to tighten up the event management side of things, so would be nice to start talking with the TMP people fairly soon.

Cheers, thanks again

Marc

**Marc Spijkerbosch** Community Arts Advisor  
P: 07 351 8154 | E: marc.spijkerbosch@rotorualc.nz | W: rotorualakescouncil.nz

**From:** Shilton, Fred <fred.shilton@wsp.com>  
**Sent:** Tuesday, 4 August 2020 11:50 AM  
**To:** Marc Spijkerbosch <Marc.Spijkerbosch@rotorualc.nz>; Mandy Godo <Mandy.Godo@rotorualc.nz>  
**Cc:** Rachel Green <Rachel.Green@rotorualc.nz>; Stewart Brown <Stewart.Brown@rotorualc.nz>  
**Subject:** RE: Hemo TMP

Hi Marc,

Yes Bryan has spoke to TMNZ, they can help out at a cost. I am still waiting to hear back from FH and Higgins regarding them supplying traffic Management in kind, if they are unable then RLC can decide who to proceed with.

Regards

**Fred Shilton**  
Business Manager - Rotorua



T: +64 7 343 1405  
M: +64 27 499 9356  
[fred.shilton@wsp.com](mailto:fred.shilton@wsp.com)

WSP  
1105 Arawa St  
Rotorua 3010  
New Zealand

[wsp.com/nz](http://wsp.com/nz)



Shaping  
the future  
of Aotearoa  
since 1870



<Stewart.Brown@rotorualc.nz>

**Subject:** RE: Hemo TMP

Hi Fred

Have cc'd install event management team Mandy and Rachel here. They'll engage with VR (Venue Response) for the EMP security.

They'll also get clarity around public notification timings for the road disruption etc

Thanks for talking with Fulton Hogan as regards implementing the TMP, I know you haven't heard back from them as yet, so might pay to have Mandy and Rachel have a chat with Ron from 50/50, see if he can pencil us in as a strong back-up option.

We're obviously keen to have these key parties talking soon.

Thanks again

Marc

**Marc Spijkerbosch** Community Arts Advisor

P: 07 351 8154 | E: marc.spijkerbosch@rotorualc.nz | W: rotorualakescouncil.nz

---

**From:** Shilton, Fred <fred.shilton@wsp.com>

**Sent:** Friday, 31 July 2020 2:12 PM

**To:** Marc Spijkerbosch <Marc.Spijkerbosch@rotorualc.nz>

**Cc:** Stewart Brown <Stewart.Brown@rotorualc.nz>

**Subject:** RE: Hemo TMP

Hi Marc,

These are the dates we had which we got from Kilwell below and attached a copy of a plan showing how far the 200m exclusion zone will be with Traffic Management Plan .

"The installation is currently programmed for 29-30 August with backup days on 5-6 and 12-13 September. Attached is the installation / flight programme, Hazard ID and a quick site plan showing the 200m ditch zone and stop go locations."

We will have the TMP with Higgins today for approval while we try to arrange someone to implement. Council will need to manage the public notification of the Event and the event itself which the Traffic Management will feed into. Higgins have said that they want the work all complete by 10am in the morning so will be an early start.

Regards

**Fred Shilton**

Business Manager - Rotorua



T: +64 7 343 1405

M: +64 27 499 9356

[fred.shilton@wsp.com](mailto:fred.shilton@wsp.com)

WSP

1105 Arawa St

Rotorua 3010

New Zealand

[wsp.com/nz](http://wsp.com/nz)



Shaping  
the future  
of Aotearoa  
since 1870

---

**From:** Marc Spijkerbosch <[Marc.Spijkerbosch@rotorualc.nz](mailto:Marc.Spijkerbosch@rotorualc.nz)>  
**Sent:** Friday, 31 July 2020 12:08 PM  
**To:** Shilton, Fred <[fred.shilton@wsp.com](mailto:fred.shilton@wsp.com)>  
**Subject:** RE: Hemo TMP

Thanks Fred  
The 23<sup>rd</sup> and 30<sup>th</sup> the only dates I have record of here

**Marc Spijkerbosch** Community Arts Advisor  
P: 07 351 8154 | E: [marc.spijkerbosch@rotorualc.nz](mailto:marc.spijkerbosch@rotorualc.nz) | W: [rotorualakescouncil.nz](http://rotorualakescouncil.nz)

---

**From:** Shilton, Fred <[fred.shilton@wsp.com](mailto:fred.shilton@wsp.com)>  
**Sent:** Friday, 31 July 2020 12:06 PM  
**To:** Marc Spijkerbosch <[Marc.Spijkerbosch@rotorualc.nz](mailto:Marc.Spijkerbosch@rotorualc.nz)>  
**Subject:** FW: Hemo TMP

Here is the date Stewart had given me, I need to check with our guys where the other backup dates came from for the following two weekends.

**Fred Shilton**  
Business Manager - Rotorua



T: +64 7 343 1405  
M: +64 27 499 9356  
[fred.shilton@wsp.com](mailto:fred.shilton@wsp.com)

WSP  
1105 Arawa St  
Rotorua 3010  
New Zealand

[wsp.com/nz](http://wsp.com/nz)



Shaping  
the future  
of Aotearoa  
since 1870

---

**From:** Stewart Brown <[Stewart.Brown@rotorualc.nz](mailto:Stewart.Brown@rotorualc.nz)>  
**Sent:** Thursday, 23 July 2020 11:00 AM  
**To:** Shilton, Fred <[fred.shilton@wsp.com](mailto:fred.shilton@wsp.com)>  
**Subject:** RE: Hemo TMP

Hi Fred,  
The helicopter is tentatively booked for Sunday 30<sup>th</sup> August (subject to weather), I believe NZTA need 4 weeks' notice to close a state highway. Can you confirm we can make this date please?

Cheers

**Stewart Brown** Kaihautū Mahi Toi Arts & Culture Manager, OHU: MAHI TOI - Arts & Culture  
Rotorua Lakes Council P: [07 351 7828](tel:073517828) | E: [stewart.brown@rotorualc.nz](mailto:stewart.brown@rotorualc.nz) | W: [www.rotorualakescouncil.nz](http://www.rotorualakescouncil.nz)

**From:** Shilton, Fred <[fred.shilton@wsp.com](mailto:fred.shilton@wsp.com)>  
**Sent:** Monday, 20 July 2020 11:50 AM  
**To:** Stewart Brown <[Stewart.Brown@rotorualc.nz](mailto:Stewart.Brown@rotorualc.nz)>  
**Subject:** RE: Hemo TMP

Hi Stewart,  
We were connecting with a provider on developing this and looking to see if we could get them on board also. I will find out where it is at and get back to you.  
Fred

**Fred Shilton**  
Business Manager - Rotorua



T: +64 7 343 1405  
M: +64 27 499 9356  
[fred.shilton@wsp.com](mailto:fred.shilton@wsp.com)

WSP  
1105 Arawa St  
Rotorua 3010  
New Zealand

[wsp.com/nz](http://wsp.com/nz)



Shaping  
the future  
of Aotearoa  
since 1870

**From:** Stewart Brown <[Stewart.Brown@rotorualc.nz](mailto:Stewart.Brown@rotorualc.nz)>  
**Sent:** Tuesday, 14 July 2020 11:12 AM  
**To:** Shilton, Fred <[fred.shilton@wsp.com](mailto:fred.shilton@wsp.com)>  
**Subject:** Hemo TMP

Hi Fred, do you have a bit of an update on progress for the sculpture?

Cheers

Stewart

---

NOTICE: This communication and any attachments ("this message") may contain information which is privileged, confidential, proprietary or otherwise subject to restricted disclosure under applicable law. This message is for the sole use of the intended recipient(s). Any unauthorized use, disclosure, viewing, copying, alteration, dissemination or distribution of, or reliance on, this message is strictly prohibited. If you have received this message in error, or you are not an authorized or intended recipient, please notify the sender immediately by replying to this message, delete this message and all copies from your e-mail system and destroy any printed copies.

---

**From:** BOPE Tmps (Higgins) <bopetmps@higgins.co.nz>  
**Sent:** Thursday, 27 August 2020 3:53 pm  
**To:** Will Bamford; Marc Spijkerbosch  
**Cc:** Frankie Evans  
**Subject:** RE: Hemo Gorge installation info  
**Attachments:** Conditions.pdf; ATWOSH.pdf

Good afternoon Marc/Will,

Thanks for making contact and sending through the updated information.

I have uploaded these to the current CAR application for the install (ref: E693589).  
The Higgins contact details within the project plan has been updated to include myself.

I am awaiting amendment to the Traffic Management Plan from Bryan Duncan at WSP, who made the original application and TMP design.

Please see attached Agreement to work on State Highway forms. These are a standard requirement of approval for works outside of utility operation or Waka Kotahi specific projects. Please complete these in full and return to me.

Thanks,

**Josh Coombes**

Traffic Management Coordinator

*Higgins showing the way*

Higgins Contractors Limited

334 Te Ngae Road DDI: 07 349 3804

PO Box 10167 T: +64 27 297 1220

Rotorua 3046 [www.higgins.co.nz](http://www.higgins.co.nz)

This e-mail is privileged and confidential. If you are not the intended recipient please delete the message and notify the sender. Any views or opinions presented are solely those of the author. Higgins Group accepts no liability for any loss caused either directly or indirectly by a virus arising from the use of this message or any attached file.

---

**From:** Will Bamford <Will.Bamford@rotorualc.nz>  
**Sent:** Thursday, 27 August 2020 3:14 PM  
**To:** Marc Spijkerbosch <Marc.Spijkerbosch@rotorualc.nz>; BOPE Tmps (Higgins)  
**Subject:** RE: Hemo Gorge installation info

Thanks Mark

Josh, if you have any queries specifically around the install methodology – feel free to call me directly (027 205 1794).

Cheers

Will

**Will Bamford Kaea Hinonga – Senior Project Manager | Ohu Haumarū - Project Management & Risk Office**  
07 351 8217 | 027 205 1794 | [will.bamford@rotorualc.nz](mailto:will.bamford@rotorualc.nz) | [rotorualakescouncil.nz](http://rotorualakescouncil.nz)

---

**From:** Marc Spijkerbosch <Marc.Spijkerbosch@rotorualc.nz>  
**Sent:** Thursday, 27 August 2020 3:03 pm  
**To:** 'bopetmps@higgins.co.nz'

**Cc:** Will Bamford <Will.Bamford@rotorualc.nz>

**Subject:** Hemo Gorge installation info

Hi Josh, good to talk just now and get up to speed on things.

Have attached the updated installation info I hope will get us over the line.

Let me know asap if there's anything further you need from us - I've cc'd Will Bamford, he's our installation project lead and has invaluable operational experience in this area.

We all really appreciate your help with this.

Huge thanks

Marc

---

**Marc Spijkerbosch** *Community Arts Advisor*

**P:** 07 351 8154

**E:** marc.spijkerbosch@rotorualc.nz | **W:** rotorualakescouncil.nz

**A:** 1061 Haupapa St, Private Bag 3029, Rotorua Mail Centre, Rotorua 3046, New Zealand

---





---

**From:** Shilton, Fred <fred.shilton@wsp.com>  
**Sent:** Monday, 31 August 2020 1:11 pm  
**To:** Marc Spijkerbosch  
**Cc:** Will Bamford  
**Subject:** [SUSPICIOUS MESSAGE] RE: Final info for Hemo TMP

**This Message contains suspicious characteristics and has originated outside your organization.**

---

Thanks Marc,  
We are happy to step back, let me know if you need anything else from us.  
Cheers

**Fred Shilton**  
Business Manager - Rotorua



T: +64 7 343 1405  
M: +64 27 499 9356  
fred.shilton@wsp.com

WSP  
1105 Arawa St  
Rotorua 3010  
New Zealand

[wsp.com/nz](http://wsp.com/nz)



Shaping  
the future  
of Aotearoa  
since 1870

---

**From:** Marc Spijkerbosch <Marc.Spijkerbosch@rotorualc.nz>  
**Sent:** Monday, 31 August 2020 12:50 PM  
**To:** Shilton, Fred <fred.shilton@wsp.com>  
**Subject:** RE: Final info for Hemo TMP

Hi Fred

Apologies I didn't come back to you earlier on this.

Just to advise that we have Josh (Higgins), NZTM and NZTA putting things together here.

Maybe a change in the installation scenario – helicopter to Te Puia carpark, then lifting in via crane - currently deemed the safer option.

Will def keep you posted.

Cheers

Marc

**Marc Spijkerbosch** Community Arts Advisor  
P: 07 351 8154 | E: marc.spijkerbosch@rotorualc.nz | W: rotorualakescouncil.nz

**From:** Shilton, Fred <fred.shilton@wsp.com>  
**Sent:** Wednesday, 26 August 2020 5:03 PM  
**To:** Marc Spijkerbosch <Marc.Spijkerbosch@rotorualc.nz>; Will Bamford <Will.Bamford@rotorualc.nz>  
**Cc:** Duncan, Bryan <Bryan.Duncan@wsp.com>  
**Subject:** [SUSPICIOUS MESSAGE] FW: Final info for Hemo TMP

**This Message contains suspicious characteristics and has originated outside your organization.**

Hi Marc/Will,  
That plan all looks great, if TMNZ are going to be completing the Traffic Management they could probably develop their own TMP to suit rather than us preparing? We can then assist with liaison with the local NOC around approval?  
Fred

**Fred Shilton**  
Business Manager - Rotorua



T: +64 7 343 1405  
M: +64 27 499 9356  
[fred.shilton@wsp.com](mailto:fred.shilton@wsp.com)

WSP  
1105 Arawa St  
Rotorua 3010  
New Zealand

[wsp.com/nz](http://wsp.com/nz)



Shaping  
the future  
of Aotearoa  
since 1870

**From:** Marc Spijkerbosch <Marc.Spijkerbosch@rotorualc.nz>  
**Sent:** Wednesday, 26 August 2020 9:11 AM  
**To:** Shilton, Fred <fred.shilton@wsp.com>  
**Cc:** Will Bamford <will.bamford@rotorualc.nz>  
**Subject:** Final info for Hemo TMP

Morning Fred  
Attached final info to feed into the TMP.  
We're aiming to fly on the 6<sup>th</sup> (or 5<sup>th</sup>) September, and I know Chris (NZTA) is also very eager to get this signed off via NZTA – so we don't have a great deal of time!  
You'll note there are a number of parties now involved/booked in. I've cc'd Will – he'll be leading the installation project.

Timing-wise I sense we're down to the wire - so hoped you could action this asap?  
I know you'll do what you can, and again it's hugely appreciated by all.

Let me know if there's anything more required from us at this point.  
Huge thanks again  
Marc

---

**Marc Spijkerbosch** *Community Arts Advisor*

**P:** 07 351 8154

**E:** marc.spijkerbosch@rotorualc.nz | **W:** rotorualakescouncil.nz

**A:** 1061 Haupapa St, Private Bag 3029, Rotorua Mail Centre, Rotorua 3046, New Zealand

---



---

NOTICE: This communication and any attachments ("this message") may contain information which is privileged, confidential, proprietary or otherwise subject to restricted disclosure under applicable law. This message is for the sole use of the intended recipient(s). Any unauthorized use, disclosure, viewing, copying, alteration, dissemination or distribution of, or reliance on, this message is strictly prohibited. If you have received this message in error, or you are not an authorized or intended recipient, please notify the sender immediately by replying to this message, delete this message and all copies from your e-mail system and destroy any printed copies.



# Hemo Sculpture Installation Project Plan

## Objective:

The following Installation plan is created to outline the process of lifting the Hemo Gorge Roundabout Sculpture from the production facility at Kilwell Fibretube, located at 490 Te Ngae Road to the middle of the roundabout on SH30 outside Te Puia for installation.


The following should be read and understood by all team members including the attached Hazard Register.

## Pilot & Aircraft – [www.kahu.co.nz](http://www.kahu.co.nz)

Mark and Anna Law lead a team of professional staff who manage and administer the entire operations of our commercial aerial work. Our pilots are friendly, safe and professional and most have worked their way up through the company from learning to fly, to commercial pilots and managers. Our staff are local and have intimate knowledge of the area, the people and our activities offered.

Mark Law is the CEO and CFI here at Kahu NZ, he began his career by recovering feral deer from the NZ Wilderness for export in 1998. This was followed by extensive aerial work throughout the world, including the USA, Mexico, Australia and Africa. Mark now has 8000+ flight hours in experience, inclusive of 4000+ Instruction flying.

The 'Blackhawk' or Sikorsky UH60 is designed for heavy lifting, within New Zealand and the South Pacific. The aircraft is configured for commercial operations.

	<p><b>SEATS:</b> 1 Pilot + 1 Crew <b>MAX LOAD:</b> 3,600 Kgs <b>SPEED :</b> 120 Knots with load <b>SOUND:</b> T88 dba @ 500' <b>DIMENSIONS:</b> Length: 64 ft 10 in Width: 9 ft 6.5 in Height: 16 ft 10 in <b>ROTOR DIAMETER:</b> 53 ft 8 in <b>PERFORMANCE:</b> Service Ceiling: 19,150 ft <b>VNE:</b> 193 kts <b>CRUISE:</b> 140 kts <b>ENDURANCE:</b> 2.1 hrs</p>
---	--

## **Project Overview, Hemo Gorge Sculpture:**

Relocation of sculpture from Kilwell Fibretube (490 Te Ngae Road) for installation at Hemo Gorge Roundabout. Sculpture will be lifted in 2 sections, requiring 2 flights.

## **Proposed installation date/s:**

(commencing 6.30am)

**Sunday 6<sup>th</sup> September,**

Or, **Saturday 5<sup>th</sup> September** if Sunday's weather forecast deems flying prohibitive.

Back-up dates:

**Saturday 12<sup>th</sup> September,**

**Sunday 13<sup>th</sup> September,**

## **Installation Teams:**

The following project plan shows the approximate estimated timings and responsibilities of each team in the installation. Teams are as follows:

- ML** Mark Law (Pilot) & Chopper.  
Role is to lift sculpture and place into Hemo roundabout.
- K1** Kilwell Team No.1 onsite at Kilwell, 490 Te Ngae Road.  
Role is to attach sculpture, lifting harness and flight sail to AB.
- KH1** Kahu Helicopters ground Crew team at Kilwell
- KH2** Kahu Helicopters ground Crew team in Te Puia carpark.  
Role is to check load before install, remove flight sail, receive all clear from TM and confirm OK to proceed with install to ML.
- KH3** Kahu Helicopters ground Crew team located in Hemo Roundabout.  
Role is to guide on ground installation and give all clear to ML once sculpture is in place and bolted down.
- K2** Kilwell team No.2 in Hemo Roundabout.  
Role is to help with installation and bolting of Hemo Sculpture once installed in roundabout.
- IMP** Impell specialist ground team to assist with installation at roundabout

**WB** Will Bamford – RLC lead. Role is to be in charge of the project overview, including having total authority to make decisions on the day of the lift. Contractually, this is Kilwell's responsibility. The installation will still be Kilwell's responsibility, with Will there to make any required judgment calls on the day (with team consultation or solo, as required). He is also be in charge of the overview between all parties (Traffic Management, Event Management, Communications, Groundcrew, Pilot).

**TM** Traffic Management team (TMNZ) at Locations TM1 to 8.

**TM1-4** – Hemo Roundabout Role is to halt traffic at locations TM1-4 and pass on all clear to ML and KH1 to proceed with install and then to release traffic again on instructions from KH1 that install is complete.

**TM5** - Pedestrian Viewing area on Golf Course.

**TM5** – To halt and restart traffic at 3 road locations where ML crosses on route between Kilwell & Hemo

**TM6** – Vaughan Road @ Location

**TM7** – Te Ngae Road @ Location 5

**TM8** – Tarawera Road @ Location 6

### **People:**

- Kilwell (pick up): 2 x Kilwell and 1 x Kahu
- Hemo Roundabout (drop zone): 2 – 3 Kilwell, 2 Kahu, 3 – 4 Impell, 1 RLC
- Traffic Management - 3 areas for Traffic Management to close roads (Traffic Management NZ)
- Event Security – VR Security
- Communications – RLC
- Drone pilot – TBC

### **Programme:**

- Pick up first helix (3.2T) at Kiwell, fly over lake and forest and put in place
- Keep longline attached, fly same route back to airport to fuel up
- Pick up second helix, fly to site and put in place
- Land at Te Puia car park, disconnect Longline, then fly back to Whakatane (via airport if fuel needed)

### **Considerations:**

- Flight route is 95% above lake, farmland, and forest. Roads will be closed to allow hawk with underslung load and longline to cross safely

### **Event Management:**

- Venue Response LTD (VR Security ) to keep secure lift zone, dropzone, associated recreation pathways and emergency landing areas

## **Traffic Management (TMNZ)**

### **Crew 1**

Set up and cover Te Ngae Road crossing 1 and Vaughans Road Crossing

- STMS +3xTC's+2xVehicles to have both sites set up and manned 30min before scheduled flights and packed down upon completion

### **Crew 2**

Set up and cover Te Ngae Road crossing 2 and Tarawera Road Crossing

- STMS +3xTC's+2xVehicles to have both sites set up and manned 30min before scheduled flights and packed down upon completion

### **Crew 3**

Set up and cover Hemo RAB and road closures

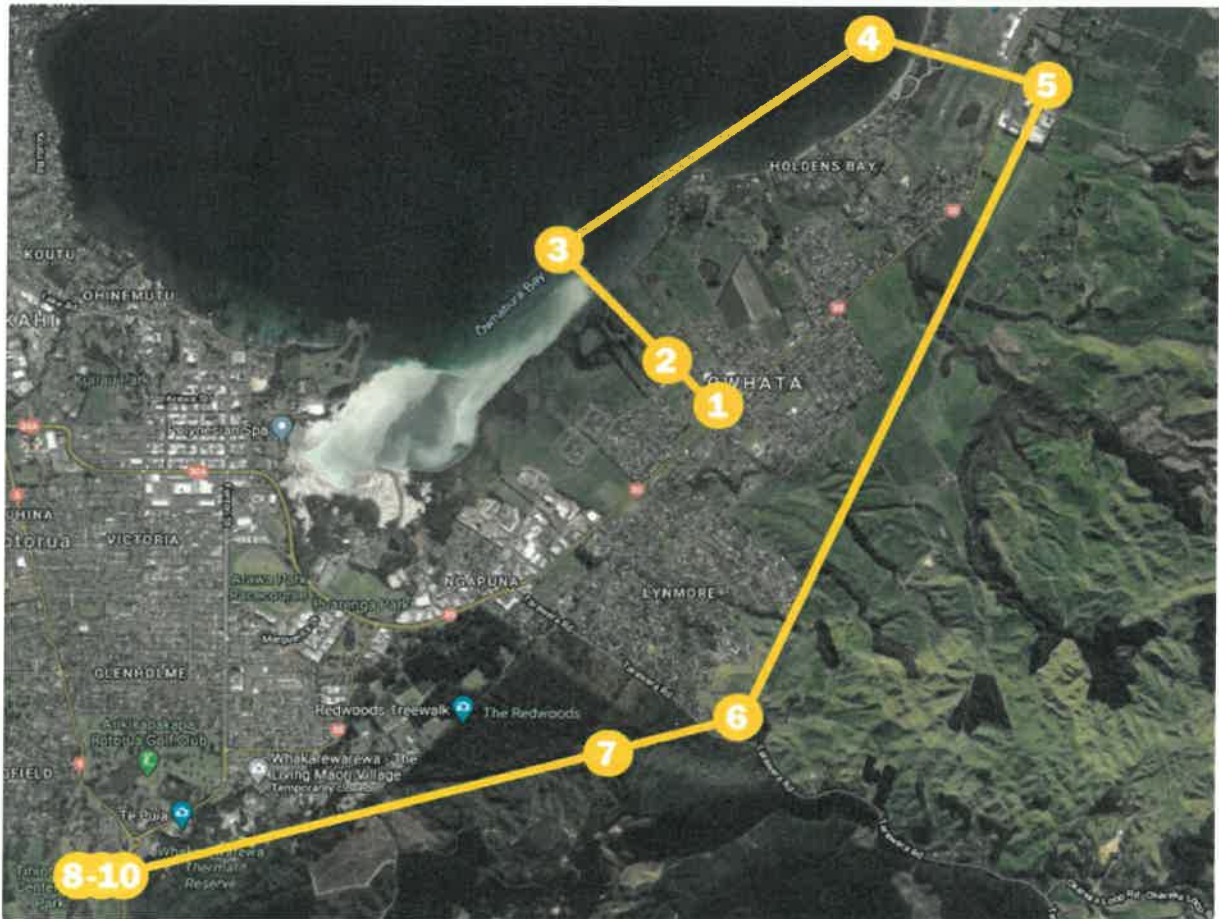
- STMS +5xTC's+2xVehicles to have Hemo area set up and manned ready for placement of structure 30min before scheduled flights and packed down upon completion.

### **VMS Boards (if required)**

3 x VMS boards to be installed 3 days prior to event



**Flight Path:**



Flight path will be the same both ways.

- Location 1** Kilwell Head office at 490 Te Ngae Road
- Location 2** Road Crossing between 258B and 264 Vaughan Road
- Location 3** Turning point in Lake Rotorua
- Location 4** Rotorua Airport
- Location 5** Road Crossing on Te Ngae Road by Airport, cross over Volcanic Air straight onto the paddock which is north of Wahanga-A-Rangi Cres (borders industrial park)
  
- Location 6** Road Crossing on Tarawera Road, just west of Okareka Loop/Tarawera Rds Intersection
- Location 7** Redwoods forestry crossing
- Location 8** Te Puia Carpark – temporary drop site for flag removal before final install lift
- Location 9** Hemo Roundabout – plinth or Installation
- Location 10** Te Puia Carpark – refuelling option

## Flight Timetable:

Once clearance is received from Rotorua Airport **ML** will confirm with the Hemo Roundabout site teams (**KH2, KH3, TM, IMP** and **K2**) and begin the flight project plan as detailed below.

## Timing Summary:

- Overall Total Project Time is 120 mins
- 75mins flight time
- Traffic closure time is 15 mins for each Helix (30 mins in total)
- Time between Installations is 50 mins

Part	Step	Project Steps (in minutes)	Total Time	Flight Time	Traffic Stopped
Outer Helix	1	<b>K1, KH1</b> to connect Outer Helix Sculpture to <b>ML</b> at 490 Te Ngae Road (Location 1). <b>K1</b> to have already connected lifting harness and flying flags to both structures prior to start.	5		
	2	<b>ML</b> picks up Outer Helix and heads out to Lake Rotorua (Location 3). Crossing Vaughan Road at Location 2. Then up the lake to Airport at location 4. Then across Te Ngae Road at Location 5 and around to Whakarewarewa forest. Crossing Tarawera Road (Location 6) and Across Redwoods (at location 7) to Hemo Gorge entrance. <b>TM</b> with lollipop to stop/start traffic at Locations 2, 5, 6, 7 & 8 to allow <b>ML</b> to cross roads.	15	15	
	3	<b>ML</b> enters Hemo gorge and stops at Te Puia Carpark (Location 8)	5	5	
	4	<b>KH2</b> removes flag, final check on lifting harness. <b>KH2</b> confirms OK to <b>TM</b> to proceed with install and stop traffic.	5		
	5	<b>TM</b> to stop traffic & relay all clear to <b>ML</b> when OK to proceed with install.	5		5
	6	<b>ML</b> to take off from Te Puia carpark and drop OH into position with help of <b>KH3, IMP &amp; K2</b> .	5	5	5
	7	<b>KH3</b> with help from <b>K2</b> secure sculpture with minimum of 16 bolts. <b>KH3 &amp; K2</b> to proceed with detaching & removing lifting platform from Outer Helix.	5	5	5
	8	<b>ML &amp; KH3</b> to confirm to <b>TM</b> roundabout is clear and restart Traffic.	0		
	9	<b>ML</b> moves back to Te Puia carpark (Location 8) and refuels.	10		
Inner Helix	10	<b>ML</b> then heads back to Kilwell at Te Ngae road (Location 1) via same Route to pick up Inner Helix. <b>TM</b> with lollipop to stop/start traffic again at Locations 2, 5, 6, 7 & 8 to allow <b>ML</b> to cross roads.	5	5	
	11	<b>K1, KH1</b> to connect Inner Helix Sculpture to <b>ML</b> at Kilwell (Location 1).	10	10	
	12	<b>ML</b> picks up Outer Helix and heads out to Lake Rotorua (Location 3). Crossing Vaughan Road at Location 2. Then up the lake to Airport at location 4. Then across Te Ngae Road at Location 5 and around to Whakarewarewa forest. Crossing Tarawera Road (Location 6) and Across Redwoods (at location 7) to Hemo Gorge entrance. <b>TM</b> with lollipop to stop/start traffic at Locations 2, 5 & 6 to allow <b>ML</b> to cross roads.	15	15	
	13	<b>ML</b> enters Hemo gorge and stops at Te Puia Carpark (Location 8)	5	5	
	14	<b>KH2</b> removes flag, final check on lifting harness. <b>KH2</b> confirms OK to <b>TM</b> to proceed with install and stop traffic.	5		
	15	<b>TM</b> to stop traffic & relay all clear to <b>ML</b> when OK to proceed with install.	5		5
	16	<b>ML</b> to take off from Te Puia carpark and drop Inner Helix into position with help of <b>KH3, IMP &amp; K2</b> .	5	5	5
	17	<b>KH3</b> with help from <b>K2</b> secure sculpture with minimum of 16 bolts. <b>KH3 &amp; K2</b> to proceed with detaching & removing lifting platform from Inner Helix.	5	5	5
	18	<b>ML &amp; KH3</b> to confirm to <b>TM</b> roundabout is clear and restart Traffic.	0		
	19	<b>ML</b> to move back to Te Puia carpark (Location 8) to park.	10		
<b>Total Time</b>			<b>120</b>	<b>75</b>	<b>30</b>
Time Between Road Closures			50		

## Hemo Roundabout

Drop zone and Traffic Management locations:



Traffic is to be halted at locations **TM1**, **TM2**, **TM3** and **TM4** when **ML** is in position and ready for install at Location 8. Once each helix is bolted into place and **ML** is back to Location 8 traffic can be released again.

All pedestrian traffic is to be halted and held at **TM5**.

There will be an area set aside (min 25m by 25m) at Te Puia car park to drop the sculpture and tie it down if needed. Also for Helicopter to land if experiencing issues.

All pedestrian traffic is to be halted and held at **TM5**.

### Trouble shooting for installation at drop zone

- There will be a funnel to guide in the outer (first) helix. This helix will have guide lines on it
- There is plywood on inside of first helix to guide second one (as it sits inside the outer helix). This one won't have guidelines
- The bolts the baseplates are dropping on are M16 and the holes in the platform are 25mm. The outer platform is sitting on 48 M16 bolts. The inner helix 24



- We will have 8 or so 130mm – 150mm bolt sleeves per helix to assist with lining baseplate and bolts up
- The bolts and the baseplate have been run over with a template 3+ times and these will be checked again before the operation (maybe this week)
- If a bolt gets damaged, Mark will lift up and we will have sledge hammers/dumpies to straighten the bolt back up. If damaged, Laszlo is comfortable rethreading the bolts once helix is in place (or grouting bolt in place)
- We will have angle grinders for worse case scenario of having to get rid of a bolt
- We are also going to have an area (min 25m by 25m) at Te Puia car park to drop the sculpture and tie it down if needed

### **Communication Plan:**

Comms required for teams at Hemo & Traffic Stops (12 sets : ML, KH1, KH2, TM1-TM8, and K2).

Comms between **ML, KH1, KH2** and **TM6** – Vaughan Road @ Location 2,  
**TM7** – Te Ngae Road @ Location 5,  
**TM8** – Tarawera Road @ Location 6

Comms between KH1 & KS1 – mobile phone will suffice to enable confirmation of arrival/departure times.

### **Go/No-Go Call on Start Date:**

We need it calm or a slight breeze from the west so as to be able to fly in from the east. Preferred time for the lift is early morning to take advantage of low wind and traffic volumes. Wind speed over 20 knots or any wind from the East will mean a No GO.

1 week Out: **ML** to review weather and confirm date & **TM** to issue publication to proceed once weather confirmed.

Night before: **ML** to give final confirmation depending on revised weather.

### **Contact Details**

KAHU Helicopters	Mark Law	027 4350664
Impell	Chad Hooton	021 588 080
Fire Brigade		111
Higgins	Simon Kirner	021 2756790

Kilwell	Craig Wilson	021 2331190
	Laszlo Kotan	021 1831203
NZTA	Chris Farnsworth	021 612 136
RLC Council	Will Bamford (Install lead)	027 205 1794
	Stewart Brown	021 588 080
	Marc Spijkerbosch	027 280 5639
Te Puia	Nick Dallimore	027 201 1536
WSP - TMP	Fred Shilton	027 499 9356
TMNZ	Steve Orr	07 349 3139 / 027 491 9495
VR Security	Janine Anderson/Tony	021 249 6081



RISK DESCRIPTION		RISK CATEGORY								RAW RISK RATING					MITIGATION (Prevention and Response)	
		DATE IDENTIFIED	Cost	Time	Scope	Quality	Service Delivery	Health & Safety	Environment	Reputation	Legal	CONSEQUENCE Rating	LIKELIHOOD Rating	RAW RISK Rating		RAW RISK Level
RS-001	14-Aug-20	✓	✓	✓	✓	✓	✓	✓	✓	✓	10	3	30	Low Risk	15	Prevention - weight sculpture 3 weeks prior to lift to ensure it is within payload Response - have back up approach of truck/crane or bigger helicopter - chop limbs off sculpture to reduce weight
RS-002	14-Aug-20	✓	✓	✓	✓	✓	✓	✓	✓	✓	10	3	30	Low Risk	15	Prevention - Have a list of all stakeholders in this document and get this confirmed by all participants - Have a comms plan which addresses communication processes and expectations between stakeholders - Have a clear points of contact for all stakeholders - Have one project manager in charge, with it clearly communicated that they are the only person who can give instruction/make changes on this project
RS-003	14-Aug-20	✓	✓	✓	✓	✓	✓	✓	✓	✓	40	4	160	High Risk	3	Prevention - work with NZTA to determine best day/time to install (Sunday mornings) - engage an experienced traffic management company to prepare a traffic management plan and run traffic management during installation. This shifts responsibility of this risk to a professional who is best qualified and experienced to manage it
RS-004	14-Aug-20	✓	✓	✓	✓	✓	✓	✓	✓	✓	10	4	40	Low Risk	14	Prevention - engage an event management/security firm to prepare an event management plan and enact this during the installation - communicate the event with the public and expectations of them if they come down (where to park, how close they can be, etc.) - we may need to shoulder cost of providing parking, toilet facilities, etc.
RS-005	14-Aug-20	✓	✓	✓	✓	✓	✓	✓	✓	✓	40	3	120	Medium Risk	6	Have detailed comms plan in place
RS-006	14-Aug-20	✓	✓	✓	✓	✓	✓	✓	✓	✓	40		0		17	Have a comms plan with capitalises on opportunities - consider video footage, press releases, etc. Prevention - use an experienced pilot - ensure all connections and stops have been checked by payload master and a third party (condition and certificates) - Ensure a qualified Kahu provided payload master oversees stropping of helixes and is responsible for connecting load to hooks - Have a flight plan which minimises travel over populated areas
RS-007	14-Aug-20	✓	✓	✓	✓	✓	✓	✓	✓	✓	70	1	70	Medium Risk	13	Prevention - Use experienced ground crew - put sleeves over bolts to protect them Response - have a plan in place to secure heliux to foundation if bolts are rounded
RS-008	14-Aug-20	✓	✓	✓	✓	✓	✓	✓	✓	✓	40	2	80	Medium Risk	12	

RISK DESCRIPTION																
RISK ID	DATE IDENTIFIED	RISK Category								RAW RISK RATING					MITIGATION (Prevention and Response)	
		Cost	Time	Scope	Quality	Service Delivery	Health & Safety	Environment	Reputation	Legal	CONSEQUENCE Rating	LIKELIHOOD Rating	RAW RISK Rating	RAW RISK Level		RAW RISK Rank
RS-009	14-Aug-20	✓	✓	✓	✓	✓	✓	✓	✓	✓	70	2	140	Medium Risk	5	Prevention - Use experienced ground crew - ensure helicopter has sufficient payload space (difference between capacity and lift weight) to power structure off if stuck. This maybe an issue with the base heliux (3.2T) but not with the middle heliux (2.5T). Blackhawk has a 3.6T payload, leaving 10% spare capacity Response - put sleeves over bolts to reduce friction - can't really respond to this so must prevent Prevention - use experienced pilot - use experienced ground crew - have one person who has absolute responsibility to make the fly/no-fly call (in conjunction with pilot and ground crew) - Increase fly day options - have back up plan of trucking to site in we cannot obtain a weather window on fly days Response - Ensure any decision to fly/not to fly is support by executive - Be prepared to cover extra costs from no-fly decisions Prevention- -Dry fit/template -Run fit test 1 weeks prior to transportation -Have Kilwell representative appointed to assure compatibility Response - Have landing zone for sculptures available and ready at Te Puia car park - Installation has to be aborted Prevention -Use experienced ground crew -Have health & safety plan in place -Circulate clear instructions on safe areas and list of individuals in drop zone Prevention - Have contingency plan for drop site at Te Puia - Ensure this possibility is included in comms plan - Have additional install days booked for completion Prevention - clearly understand cost responsibilities between Kilwell and RLC - Marc to give Project Manager a very clear idea of budget - PM to develop a plan for expected outcomes and cost it - set risk expectation around costs if we cannot achieve helicopter insertion - have a clear understanding what costs are if we can't fly on a particular day Prevention - ensure all potential key stakeholders have been identified and are assessed for communications requirements - Comms lead to ensure effective communication methods with stakeholder groups
RS-010	14-Aug-20	✓	✓	✓	✓	✓	✓	✓	✓	✓	40	3	120	Medium Risk	6	Having only a 2 day flight window means we may be pressured into flying in unsuitable conditions
RS-011	14-Aug-20	✓	✓	✓	✓	✓	✓	✓	✓	✓	40	3	120	Medium Risk	6	Everything fitting together
RS-012	14-Aug-20	✓	✓	✓	✓	✓	✓	✓	✓	✓	100	1	100	Medium Risk	11	Injury to individual during installation
RS-013	14-Aug-20	✓	✓	✓	✓	✓	✓	✓	✓	✓	40	4	160	High Risk	3	Inability to complete install due to change in conditions on day
RS-014	14-Aug-20	✓	✓	✓	✓	✓	✓	✓	✓	✓	70	4	280	High Risk	1	Unexpected costs - budget overrun. Reputational risk for Council
RS-015	14-Aug-20	✓	✓	✓	✓	✓	✓	✓	✓	✓	40	3	120	Medium Risk	6	Key stakeholders left out of the loop. Potential for damage to Council's reputation and also to undermine any positive reputation enhancement gained by successful installation



RISK DESCRIPTION																
RISK ID	DATE IDENTIFIED	RISK Category								RAW RISK RATING				MITIGATION (Prevention and Response)		
		Cost	Time	Scope	Quality	Service Delivery	Health & Safety	Environment	Reputation	Legal	CONSEQUENCE Rating	LIKELIHOOD Rating	RAW RISK Rating		RAW RISK Level	RAW RISK Rank
RS-016	14-Aug-20										40	3	120	Medium Risk	6	Prevention - ensure messaging includes rationale for keeping public away from installation - clear consistent key messaging - the fact that it is difficult to determine a date will work in our favour to mitigate this risk  Prevention - Inform immediate residents to Kiwell through appropriate comms mechanisms (door knock, letter drop, etc) - Publicise event with expectation of high noise - ensure we noise of helicopter is within noise limits for time of the day  Response - pre plan press release for post completion
RS-017	14-Aug-20										40	5	200	High Risk	2	Disturbing public due to noise of helicopter



## Hazard ID Worksheet

<p style="color: blue; font-style: italic;"><b>Description of Work – Lifting Statue with Helicopter, Rotorua.</b></p>	<p>Contract Number:</p>		
<p>Working / Lifting with Helicopter/ Managing Traffic/ Flying in Control Zone</p>			
<p><b>HAZARDS OF THE WORK TO BE UNDERTAKEN</b></p>			
<p><b>STEPS</b> (Key Tasks) (Break the job down into its basic steps)</p>	<p><b>TOOLS AND EQUIPMENT</b></p>	<p><b>HAZARDS</b> (Associated with each key task)</p>	<p><b>HAZARD CONTROL</b> (How do you plan to eliminate or minimise)</p>
<p>Overview of job requirement</p>	<p>Requirements to complete job</p> <p>Permits, authorisations</p> <p>NZTA Road closure</p> <p>Predetermination of weight</p> <p>Lift trial</p>	<p>Working with helicopters, underslung load</p> <p>Control tower approval required. Notify Police/Emergency services. Notify Council.</p> <p>Helicopter hovering over road</p> <p>Weight needs to be within limit</p> <p>Load could be too heavy or lift</p>	<p>Staff training, all PPE available, Radio comms with pilot and staff. Hand signals as backup.</p> <p>Other aircraft in circuit. Police to be made aware of lift. Kahu to notify council.</p> <p>NZTA to close road when helicopter is placing load. Weigh load prior to lift</p> <p>If possible, trial lift the statue to</p>

	<p>ring unsuitable</p>	<p>check weight and test lifting ring.          Trial pickup by helicopter night before.          Pick early morning as best, but decision will rely on fog/wind etc.          NZTM organise traffic.          RLC to notify all neighbours of intended lift and to mitigate.          Ideally a STH /SW/NW wind so that the approach is over the carpark.          Plan route clear of houses, out over lake front to crossroad in vicinity of Airport, free of traffic.          Plan run to coincide when clear.          Flight to site over clear areas.          Have a flight path planned clear of obstacles or built up area.          Strop up loads using BHL certified strops and shackles to lifting eyes on statue.</p>
<p>Timing for job</p>	<p>Could end up with period of unsettled weather.</p>	
<p>Timing for traffic</p>	<p>Too much traffic buildup, or cars trying to go through whilst the lift is being performed.</p>	
<p>Neighbour considerations at lifting point</p>	<p>Noise and strong rotor wash/leaves and dust blowing about.</p>	
<p>Wind considerations at site</p>	<p>Wind from the wrong direction means an approach from wrong way.</p>	
<p>Flight path and characteristics</p>	<p>Could drop load or cause hazards to people /stock/property.</p>	
<p>Emergency set down procedure</p>	<p>Load spins or oscillates out of control, problems with helicopter</p>	
<p>Stropping of load</p>	<p>Wrong sized /combinations of strops/shackles</p>	

	Speed restrictions	Too fast a speed destroys statue or creates massive oscillation.	Keep speed to safe limit to stop spinning, and to ensure statue stays intact. Pilot to utilise known standard practise for this type of sophisticated lift.
Hooking up - Our crew	Shackles- we supply	Working with lifting gear, fingers/toes/eyes/ wrong lifting gear.	Staff Training, gloves available. All staff to wear appropriate PPE. Use of correct shackles. Crew to have RT comms.
Ropes or strops	Ropes- Beck certified	Use of unapproved/uncertified ropes or shackles	Only Kahu approved strops and shackles from lifting ring to helicopter.  Take 2 complete sets of strops/ropes /shackles to be able to leave ropes on statue till able to be retrieved.
Initial Helicopter Lift	Helicopter- Bell 204	Noise/Sound/ Hearing difficulties	Earmuffs/Hand signals
		Dust	Staff Training, let dust dissipate.
		General Helicopter Dangers	Staff Training in working around helicopters.  Escort other personnel to/away from helicopter. Keep all onlookers clear, and notify neighbours again
	Lifting Ropes, Shackles	Dropping on personnel	Staff training - don't fly over personnel if possible.

				Don't walk under slung load, except when positioning on footing.
			Working under Helicopter	Staff Training, emergency procedures.
			Emergency landing when hooking up	BHL crew to follow Emergency Procedure in SOP.
Pilot Considerations	Wires, Trees, Other Obstacles		Unintentional Contact	Pilot training, briefings, etc Use of radios to keep in contact Radio contact with Tower before lift-off
"Toolbox Meeting" –all personnel	Helicopter and equipment,		As above	Sign Acceptance form B5 DFR Put flight path for day on back  Mark out path on topo map.  All contractor's staff ' on sites to assist the lift will be given safety briefing by Chief Pilot, - with understanding they are under the direction of the Crew Chief once helicopter is airborne.
Site Inspection and Haz ID	Flight path and Job site		Pick wrong path/Time	Pilot to undertake with supervisor. Phone call to Tower prior to start up
Pre acceptance lift by helicopter	All Equipment		Statue doesn't lift flat, or	Other crew and staff stand clear.

<p>crew.</p>		<p>oscillates wildly due to rotor wash. Lifting ring bends Tail rudder is too flexible</p>	<p>Lift statue to check for stability and strength of lifting spreader and rudder the night before if possible.</p>
<p>Use of Radio from Pilot to Crews</p>	<p>Radios/Headsets</p>	<p>To make sure that RT comms are working and that everyone is in the loop. Watch for safety lapses, and staff becoming “blasé”</p>	<p>Crew Chiefs to respond from both ends.</p>
<p>Crew Chief to advise and inform.</p>	<p>RT comms and hand signals</p>	<p>No Plan B or C</p>	<p>Pilot to acknowledge crew chiefs. Check horn on helicopter. Check crew at both ends are using hand signals as well.</p>
<p>Safety of crew</p>	<p>All staff</p>	<p>Staff standing in the wrong place or under the load. Hooked up wrongly. Not wearing hi vis or PPE</p>	<p>Check that all crew move out to the LHS of the Heli before lift and that when placing statue. All non BHL staff are well out of the way on LHS of helicopter. Only Crew chief and assistant to move in once statue is in position. Once placed then other contractors to be beckoned in. Help is needed to rotate and place statue over bolts.</p>

<p>Unhooking of load</p>	<p>Long line</p>	<p>Using too heavy a shackle which can damage statue.</p>	<p>When unhooking shackle from master hook, move backwards to clear statue before releasing.</p> <p>Have cherry picker on site if necessary to assist with this.</p>
<p>Refuelling</p>	<p>Trailer Tanker at carpark</p>	<p>Not enough fuel to do job or too much or too little fuel to complete lift.</p>	<p>Assess distance/time to compute fuel to minimum 20 min reserve.</p> <p>Refuel at carpark</p>
<p>Return to pickup point</p>	<p>Aircraft</p>	<p>Flying over houses, stock or 3<sup>rd</sup> party obstacles.</p> <p>ATC clearance not given</p>	<p>Plan path LAW safe operating procedures</p> <p>Call Control tower before leaving</p> <p>Re fuelling area to confirm if any delays.</p> <p>Stay in contact with ATC. If delayed, orbit or land at airport till clearance given</p>



---

**From:** Will Bamford  
**Sent:** Thursday, 3 September 2020 8:27 am  
**To:** 'bopetmps@higgins.co.nz'; Stewart Brown  
**Cc:** Marc Spijkerbosch; 'Craig Wilson'  
**Subject:** FW: Hemo Gorge installation info  
**Attachments:** doc20200902172407.pdf

Hi Josh

Please see attached. Please see attached. Let me know if you need another copy from RLC which covers off the maintenance side.

Cheers

Will

**Will Bamford** Kaea Hinonga – Senior Project Manager | *Ohu Haumarū* - Project Management & Risk Office  
[07 351 8217](tel:073518217) | [027 205 1794](tel:0272051794) | [will.bamford@rotorualc.nz](mailto:will.bamford@rotorualc.nz) | [rotorualakescouncil.nz](http://rotorualakescouncil.nz)

---

**From:** Craig Wilson <[craigw@kilwell.co.nz](mailto:craigw@kilwell.co.nz)>  
**Sent:** Thursday, 3 September 2020 8:16 am  
**To:** Will Bamford <[Will.Bamford@rotorualc.nz](mailto:Will.Bamford@rotorualc.nz)>  
**Subject:** RE: Hemo Gorge installation info

Hi Will,

Signed copies attached.

Just a couple I crossed out which are related to the costs for removal and upkeep which are the council responsibilities not ours.

Regards  
Craig

---

**From:** Marc Spijkerbosch <[Marc.Spijkerbosch@rotorualc.nz](mailto:Marc.Spijkerbosch@rotorualc.nz)>  
**Sent:** Friday, 28 August 2020 9:04 am  
**To:** Craig Wilson ([craigw@kilwell.co.nz](mailto:craigw@kilwell.co.nz)) <[craigw@kilwell.co.nz](mailto:craigw@kilwell.co.nz)>  
**Cc:** Will Bamford <[Will.Bamford@rotorualc.nz](mailto:Will.Bamford@rotorualc.nz)>; Stewart Brown <[Stewart.Brown@rotorualc.nz](mailto:Stewart.Brown@rotorualc.nz)>; 'bopetmps@higgins.co.nz'  
**Subject:** FW: Hemo Gorge installation info

Morning Craig  
Things lining up well for install on the 6<sup>th</sup> - attached just needs to be filled in on behalf Kilwell.  
We'll need to move fairly quickly on this.  
Perhaps if you could then send directly through to Josh at Higgins (cc'd, as below).

Let me know if I can help at all – huge thanks in advance.  
Cheers  
Marc

**Marc Spijkerbosch** Community Arts Advisor  
P: 07 351 8154 | E: marc.spijkerbosch@rotorualc.nz | W: rotorualakescouncil.nz

---

**From:** BOPE Tmps (Higgins)  
**Sent:** Thursday, 27 August 2020 3:53 PM  
**To:** Will Bamford <Will.Bamford@rotorualc.nz>; Marc Spijkerbosch <Marc.Spijkerbosch@rotorualc.nz>  
**Cc:** Frankie Evans  
**Subject:** RE: Hemo Gorge installation info

Good afternoon Marc/Will,

Thanks for making contact and sending through the updated information.

I have uploaded these to the current CAR application for the install (ref: E693589).  
The Higgins contact details within the project plan has been updated to include myself.

I am awaiting amendment to the Traffic Management Plan from Bryan Duncan at WSP, who made the original application and TMP design.

Please see attached Agreement to work on State Highway forms. These are a standard requirement of approval for works outside of utility operation or Waka Kotahi specific projects. Please complete these in full and return to me.

Thanks,

**Josh Coombes**  
Traffic Management Coordinator  
**Higgins** *showing the way*  
Higgins Contractors Limited  
334 Te Ngae Road DDI: 07 349 3804  
PO Box 10167 T: +64 27 297 1220  
Rotorua 3046 [www.higgins.co.nz](http://www.higgins.co.nz)

This e-mail is privileged and confidential. If you are not the intended recipient please delete the message and notify the sender. Any views or opinions presented are solely those of the author. Higgins Group accepts no liability for any loss caused either directly or indirectly by a virus arising from the use of this message or any attached file.

---

**From:** Will Bamford <Will.Bamford@rotorualc.nz>  
**Sent:** Thursday, 27 August 2020 3:14 PM  
**To:** Marc Spijkerbosch <Marc.Spijkerbosch@rotorualc.nz>; BOPE Tmps (Higgins)  
**Subject:** RE: Hemo Gorge installation info

Thanks Mark

**Josh**, if you have any queries specifically around the install methodology – feel free to call me directly (027 205 1794).

Cheers

Will

**Will Bamford** Kaea Hinonga – Senior Project Manager | **Ohu Haumarū** - Project Management & Risk Office  
07 351 8217 | 027 205 1794 | [will.bamford@rotorualc.nz](mailto:will.bamford@rotorualc.nz) | [rotorualakescouncil.nz](http://rotorualakescouncil.nz)

---

**From:** Marc Spijkerbosch <Marc.Spijkerbosch@rotorualc.nz>  
**Sent:** Thursday, 27 August 2020 3:03 pm  
**To:** 'bopetmps@higgins.co.nz'  
**Cc:** Will Bamford <Will.Bamford@rotorualc.nz>  
**Subject:** Hemo Gorge installation info

Hi Josh, good to talk just now and get up to speed on things.  
Have attached the updated installation info I hope will get us over the line.  
Let me know asap if there's anything further you need from us - I've cc'd Will Bamford, he's our installation project lead and has invaluable operational experience in this area.

We all really appreciate your help with this.  
Huge thanks  
Marc

---

**Marc Spijkerbosch** *Community Arts Advisor*  
P: 07 351 8154  
E: [marc.spijkerbosch@rotorualc.nz](mailto:marc.spijkerbosch@rotorualc.nz) | W: [rotorualakescouncil.nz](http://rotorualakescouncil.nz)  
A: 1061 Haupapa St, Private Bag 3029, Rotorua Mail Centre, Rotorua 3046, New Zealand

---







# Hemo Sculpture Installation Project Plan

Revision: Will Bamford (RLC) – 10/09/20

## Contents

Objective.....	2
Project Overview, Hemo Gorge Sculpture .....	2
Proposed installation date/s .....	2
Programme.....	2
Installation Teams.....	3
Location of teams/people .....	3
Event Management.....	4
Traffic Management (TMNZ).....	4
Flight Path.....	5
Helicopter Summary .....	7
Crane Summary.....	7
Hemo Roundabout.....	8
Installation Trouble Shooting.....	9
Communication Plan.....	10
Contact Details (key contact of each organisation highlighted).....	10
Plant .....	10

## **Objective**

This installation plan outlines the process of lifting the Hemo Gorge Roundabout Sculpture from the production facility at Kilwell Fibretube, located at 490 Te Ngae Road to the middle of the roundabout on SH30 outside Te Puia for installation.

**The following must be read and understood by all team members.**

## **Project Overview, Hemo Gorge Sculpture**

The sculptures is comprised of two pieces – the inner and outer helixes. Installation methodology has two key stages:

1. Helicopter the sculptures (outer and inner helixes) to Te Puia Car Park
2. Crane sculptures from car park into Hemo Roundabout.

Each helix will be flown to the Te Puia Car Park, and craned into place, separately.

## **Proposed installation date/s**

**Sunday 6<sup>th</sup>, Saturday 12<sup>th</sup>, and Sunday 13<sup>th</sup> September.**

It is expected the installation will take between 2 and 6 hours. Approximate timeframe for installation is 6:30am – 10:30am/12pm.

~~If we cannot get Traffic Management Approval for the Hemo Roundabout for Sunday 6<sup>th</sup>, if weather allows, we will consider helicoptering the sculpture from Kilwell to the Te Puia Car Park site and then do the crane install at a later date.~~

~~NOTE:- Depending on Traffic Management Approval, the two stages could be undertaken separately between Sunday 6<sup>th</sup> and Saturday 19<sup>th</sup> September.~~

We need it calm or a slight breeze from the west so as to be able to fly in from the east. Preferred time for the lift is early morning to take advantage of low wind and traffic volumes. Wind speed gusting over 20 knots or any wind from the East will mean a No GO. We will make a decision 3 – 4 days before if it looks possible to make the installation, and then a final confirmation the night before. This decision will be made by the pilot in conjunction with the Install Lead.

## **Programme**

- Have a landing platform set up at Te Puia car park with anchor blocks to secure the helixes to
- Have eastern (forest) side of roundabout closed off, with stop/go running traffic through the western side of roundabout
- Have crane parked on road on eastern side of roundabout
- Fly outer helix onto car park landing platform and secure to anchor blocks
- As helicopter flies back to Kilwell, crane picks up outer helix and moves to inside of roundabout (still attached to crane)
- Helicopter lands inner helix at carpark and it's secured to anchor blocks

- Install outer helix and then inner helix by crane.

### **Installation Teams**

The following project plan shows the approximate estimated timings and responsibilities of each team in the installation. Teams are as follows:

- ML** Mark Law (Pilot) & Chopper.  
Role is to lift helixes and place into Te Puia Car Park.
- K1** Kilwell Team No.1 onsite at Kilwell, 490 Te Ngae Road.  
Role is to attach lifting harness and flight sail to helixes and then longline to lifting harness.
- KH1** Kahu Helicopters ground Crew team at Kilwell  
Role is to attach lifting harness and flight sail to helixes and then longline to lifting harness.
- KH2** Kahu Helicopters ground Crew team in Te Puia carpark.  
Role is to guide pilot from landing site, receive loads, and secure helixes before detaching from longline.
- K2** Kilwell team No.2 in Te Puia carpark.  
Role is to manage installation of helixes by crane and bolting of baseplate to sculpture plinth once installed in roundabout.
- IMP** Impell specialist ground team to assist with installation at roundabout
- PC** Pollock Cranes (operator and Dogman)  
Role is to crane helixes from Te Puia Car Park and place on sculpture plinth in roundabout. Includes connecting crane line to helix lifting harnesses.
- WB** Will Bamford – RLC lead. Role is to be in charge of the project overview, including having total authority to make decisions on the day of the lift. Contractually, this is Kilwell’s responsibility. The installation will still be Kilwell’s responsibility, with Will there to make any required judgment calls on the day (with team consultation or solo, as required). He is also be in charge of the overview between all parties (Traffic Management, Event Management, Communications, Groundcrew, Pilot, Crane Operator, Dogman). He will be based at Hemo Roundabout.
- TM** Traffic Management team (TMNZ) at Locations TM1 to 8.  
TM1-4 – Hemo Roundabout Role is to manage traffic around Hemo Roundabout.  
TM5 - Pedestrian Holding area at Toi Ohomai  
TM6-8 – To halt and restart traffic at 3 road locations where ML crosses on route between Kilwell & Hemo  
TM6 – Vaughan Road @ Location  
TM7 – Te Ngae Road @ Location 5  
TM8 – Tarawera Road @ Location 6

### **Location of teams/people**

- Kilwell (pick up): 2 x Kilwell and 1 x Kahu

- Te Puia Car Park: 2 – 3 Kilwell, 2 Kahu, 2 Impell, 1 RLC
- Eastern side of Hemo Rd – 2 x Pollock Cranes
- Hemo Roundabout (drop zone): 3 – 4 Kilwell, 2 Impell
- Traffic Management - 3 areas for Traffic Management to close roads (Traffic Management NZ)
- Event Security – VR Security
- Communications – RLC
- Drone pilot – TBC

### **Event Management**

- Venue Response LTD (VR Security) to keep secure inside of hemo roundabout and associated recreation pathways and emergency landing areas

### **Traffic Management (TMNZ)**

- Flight route is 95% above lake, farmland, and forest. Roads will be closed to allow helicopter with underslung load and longline to cross safely
- We do not require road closure at Roundabout for helicopter to drop off helixes in Te Puia Car Park.
- Specific detail on TMP will be within the approved traffic management plan.
- There are three main components to the Traffic management:

#### **Securing helicopter path:**

Stop and go road closures will be set up at the following locations to temporarily close the road (approximately 30seconds) as the helicopter crosses with underslung load and/or longline. This will occur 4 times at each location:

- Vaughans Road Crossing (between 258B and 264 Vaughan Rd)
- Te Ngae Road crossing (~~cross over Volcanic Air straight onto the paddock which is north of Wahanga-A-Rangi Cres (borders industrial park south of airport)~~)
- Tarawera Road Crossing (west of Okareka Loop/Tarawera Rds Intersection)

#### **Hemo Roundabout**

The eastern (forest) side of Hemo Roundabout will be closed off, with stop/go running traffic through the western side of roundabout.

#### **VMS Boards (if required)**

3 x VMS boards to be installed 3 days prior to event



**Flight Path**



Formatted: Normal



Flight path will be the same both ways.

- Location 1** Kilwell Head office at 490 Te Ngae Road
- Location 2** Road Crossing between 258B and 264 Vaughan Road
- Location 3** Turning point in Lake Rotorua
- Location 4** Rotorua Airport
- Location 5** Road Crossing on Te Ngae Road ~~by Airport, before River rats Raft & Kayak and onto the paddock to the south of the wetland / lakesouth of Airport~~
- Location 6** Road Crossing on Tarawera Road, just west of Okareka Loop/Tarawera Rds Intersection
- Location 7** Redwoods forestry crossing
- Location 8** Te Puia Carpark

## **Helicopter Summary**

Once clearance is received from Rotorua Airport ML will confirm with the Hemo Roundabout site teams (KH2, TM, IMP and K2) and begin the flight project plan as detailed below.

### Outer Helix

1. Rotorua Airport (Location 4) - ML connects longline to helicopter, radios traffic management to stop traffic and flies to Kilwells (location 1) – 5mins
2. Location 1 - K1/KH1 to connect Outer Helix to ML – 5mins
3. Flight path – ML radios traffic management to stop traffic and flies flight path. Crosses Vaughan's Rd at Location 2, then up the lake to Airport crossing Te Ngae Rd at Location 5. Flies across farmland to cross Tarawera Rd at Location 6 and then across the Whakarewarewa Forest to Te Puia Car Park (Location 8) – 15mins
4. Puts helix down at Te Puia Car Park and waits for it to be secured to concrete blocks before disconnecting hook – 5mins
5. Flies flight path back to Kilwells, informing traffic management as required. Filling up at airport if need – 5mins

### Inner Helix

6. Location 1 - K1/KH1 to connect Inner Helix to ML – 5mins
7. Flight path – ML radios traffic management to stop traffic and flies flight path. Crosses Vaughan's Rd at Location 2, then up the lake to Airport crossing Te Ngae Rd at Location 5. Flies across farmland to cross Tarawera Rd at Location 6 and then across the Whakarewarewa Forest to Te Puia Car Park (Location 8) – 15mins
8. Puts helix down at Te Puia Car Park and waits for it to be secured to concrete blocks before disconnecting hook – 5mins
9. Flies flight path back to airport, informing traffic management as required. Disconnects longline and heads back to Whakatane – 5mins

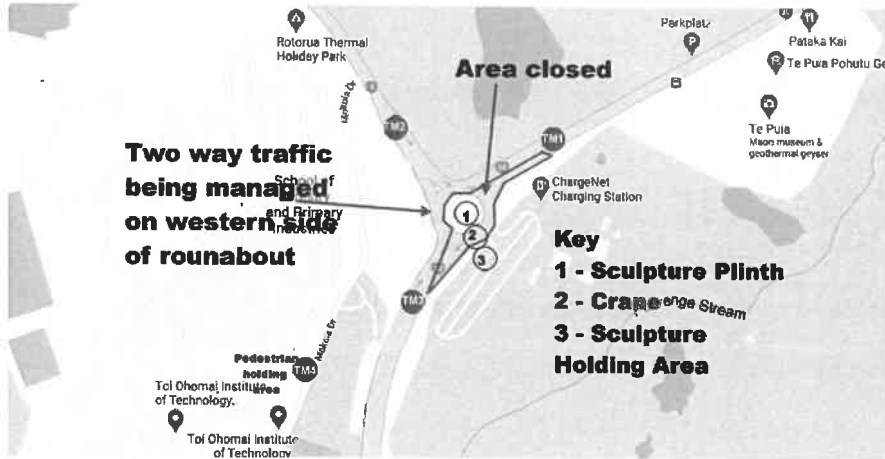
Total Time – 65 minutes

## **Crane Summary**

1. Once ML takes off, connect helix to hook and lift into roundabout and commence installation
2. If possible, install and secure outer helix to sculpture plinth before inner helix arrives at car park. If inner helix arrives before outer helix install is complete, outer helix to be raised and secured by crane within roundabout while inner helix is secured.
3. Once outer helix is installed, Kilwell to remove the guide ropes from the inside of the outer helix before crane commence installation of inner helix. commence installation if inner helix.
4. It is expected Crane installation will take between 1 and 53 hours.

**Hemo Roundabout**

Drop zone and Traffic Management locations:



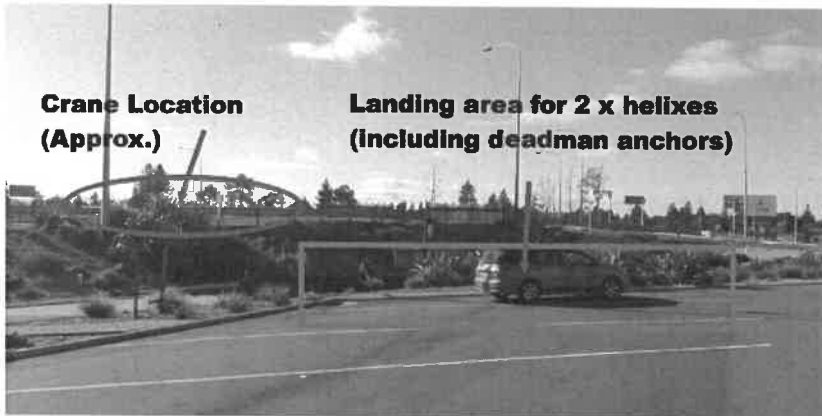
The eastern (forest) side of Hemo Roundabout will be closed off, with stop/go running traffic through the western side of roundabout.

As required, all pedestrian traffic is to be halted and held at TM4.

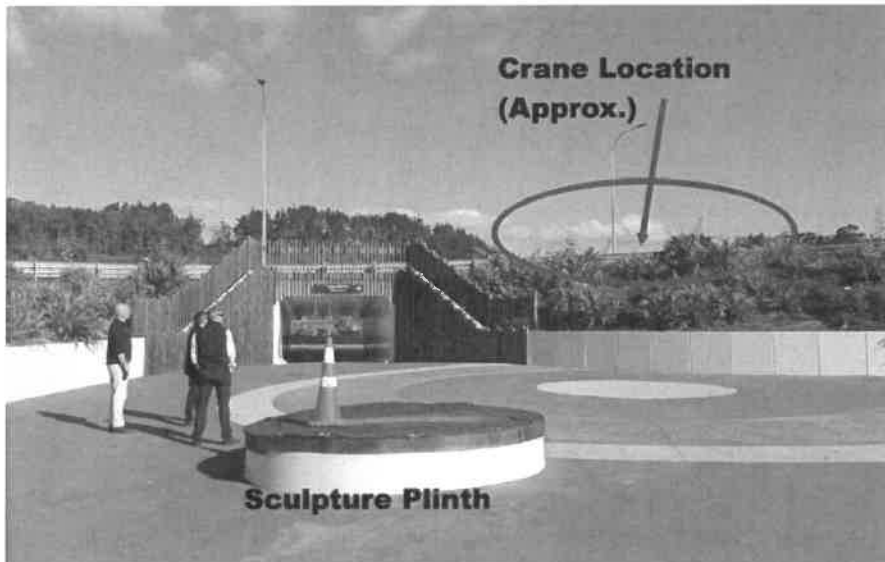
There will be an area set aside (min 25m by 25m) at Te Puia car park to drop the helixes and tie them down. The helixes will be secured by guidelines to deadman anchors (either containers or concrete blocks). This area can also be used for the Helicopter to land if experiencing issues.

The crane will be located on Hemo Road. The distance between the Crane and both the work area in Te Puia Car Park and the sculpture plinth is approximately 25m. The crane has a working reach of 30m.

Landing zone for helixes:



Approximate crane location from inside of roundabout:



### **Installation Trouble Shooting**

- The outer helix will have guidelines on it to guide it to place.
- There is plywood on inside of first helix to guide second one (as it sits inside the outer helix). This one won't have guidelines.
- The bolts the baseplates are dropping on are M16 and the holes in the platform are 25mm. The outer platform is sitting on 48 M16 bolts. The inner helix 24
- We will have 2 – 4 130mm – 150mm bolt sleeves per helix to assist with lining baseplate and bolts up
- The bolts and the baseplate have been run over with a template 3+ times
- The crane allows us to hold the baseplates over the bolts and get alignment before lowering the helixes into place.
- If the bolts are out of alignment or get damaged, PC will lift up and we will have sledge hammers to straighten the bolt back up. If damaged, Laszlo is comfortable rethreading the bolts once helix is in place (or grouting bolt in place)
- We will have angle grinders for worse case scenario of having to get rid of a bolt
- The area in the Te Puia car park will be set up to store the sculptures if we cannot get them installed on the plinth on the day.

## **Communication Plan**

A communications plan is being developed for project communications, and will including notification of all stakeholders, and impacted parties.

### Installation comms:

Comms required for teams at Hemo & Traffic Stops (12 sets : ML, KH1, KH2, TM1-TM8, and K2).

Comms between ML, WB, KH1, KH2 and TM6 – Vaughan Road @ Location 2,  
TM7 – Te Ngae Road @ Location 5,  
TM8 – Tarawera Road @ Location 6

Comms between KH1 & KS1 – mobile phone will suffice to enable confirmation of arrival/departure times.


## **Contact Details (key contact of each organisation highlighted)**

KAHU Helicopters	Mark Law	027 4350664
Impell	Chad Hooton	021 588 080
Fire Brigade		111
Higgins	Simon Kirner	021 2756790
Kilwell	Craig Wilson	021 2331190
	Laszlo Kotan	021 1831203
NZTA	Chris Farnsworth	021 612 136
RLC Council	Will Bamford (Install lead)	027 205 1794
	Stewart Brown	021 588 080
	Marc Spijkerbosch	027 280 5639
Te Puia	Nick Dallimore	027 201 1536
WSP	Fred Shilton	027 499 9356
TMNZ	Steve Orr	07 349 3139 / 027 491 9495
VR Security	Janine Anderson/Tony	021 249 6081

## **Plant**

Aircraft – [www.kahu.co.nz](http://www.kahu.co.nz)

The 'Blackhawk' or Sikorsky UH60 is designed for heavy lifting, within New Zealand and the South Pacific. The aircraft is configured for commercial operations.

	SEATS: 1 Pilot + 1 Crew
	MAX LOAD: 3,600 Kgs
	SPEED : 120 Knots with load
	SOUND: T88 dba @ 500'
	DIMENSIONS: Length: 64 ft 10 in
	Width: 9 ft 6.5 in
	Height: 16 ft 10 in
	ROTOR DIAMETER: 53 ft 8 in
	PERFORMANCE:
	Service Ceiling: 19,150 ft
VNE: 193 kts	
CRUISE: 140 kts	
ENDURANCE: 2.1 hrs	

Crane - <https://pollockcranes.co.nz/>

Pollock Cranes (Tauranga) – 100 Ton. Can lift 4.5T at a reach of 30metres. The maximum distance the crane will need to reach is 25metres.







---

**From:** Shilton, Fred <fred.shilton@wsp.com>  
**Sent:** Thursday, 3 September 2020 12:31 pm  
**To:** Will Bamford; Craig Wilson; Laszlo Kotan  
**Cc:** Stewart Brown; Marc Spijkerbosch; 'Chris Farnsworth'; Haley Farmer  
**Subject:** [SUSPICIOUS MESSAGE] RE: Hemo Sculpture - producer statement  
**Attachments:** 2017\_11\_24 Hemo Roundabout Sculpture PS1 and Calcs.pdf

---

**This Message contains suspicious characteristics and has originated outside your organization.**

---

Hi Will,  
Here is the PS1 for the foundation and the original proposed stainless steel sculpture.  
Regards

**Fred Shilton**  
Business Manager - Rotorua



T: +64 7 343 1405  
M: +64 27 499 9356  
fred.shilton@wsp.com

WSP  
1105 Arawa St  
Rotorua 3010  
New Zealand

[wsp.com/nz](http://wsp.com/nz)



**Shaping  
the future  
of Aotearoa  
since 1870**

**From:** Will Bamford <Will.Bamford@rotorualc.nz>  
**Sent:** Wednesday, 2 September 2020 2:31 PM  
**To:** Craig Wilson <craigw@kilwell.co.nz>; Laszlo Kotan <Laszlok@fibretube.co.nz>; Shilton, Fred <fred.shilton@wsp.com>  
**Cc:** Stewart Brown <Stewart.Brown@rotorualc.nz>; Marc Spijkerbosch <Marc.Spijkerbosch@rotorualc.nz>; 'Chris Farnsworth' <Chris.Farnsworth@nzta.govt.nz>; Haley Farmer  
**Subject:** Hemo Sculpture - producer statement

Hi Craig and Laz

How's it going?

Just spoke with Chris from NZTA. Can you please send us a copy of all the producer statements/engineer review documents for the sculpture? Their structural team are after them.

**Fred**, can you please flick through any producer statements for the plinth?

Please let me know if you have any queries.

Will

---

**Will Bamford** Kaea Hinonga – *Senior Project Manager* | *Ohu Haumarū - Project Management & Risk*  
*Office*

**Waea:** 07 351 8217 | **Waea Pūkoro:** 027 205 1794

**Īmera:** [will.bamford@rotorualc.nz](mailto:will.bamford@rotorualc.nz) | **Ipurangi:** [rotorualakescouncil.nz](http://rotorualakescouncil.nz)

**Taunga:** 1061 Haupapa St, Private Bag 3029, Rotorua Mail Centre, Rotorua 3046, New Zealand

---

**ROTORUA**  
**LAKES COUNCIL**

---

NOTICE: This communication and any attachments ("this message") may contain information which is privileged, confidential, proprietary or otherwise subject to restricted disclosure under applicable law. This message is for the sole use of the intended recipient(s). Any unauthorized use, disclosure, viewing, copying, alteration, dissemination or distribution of, or reliance on, this message is strictly prohibited. If you have received this message in error, or you are not an authorized or intended recipient, please notify the sender immediately by replying to this message, delete this message and all copies from your e-mail system and destroy any printed copies.

---

**From:** Josh Coombes (Higgins)  
**Sent:** Friday, 4 September 2020 1:29 pm  
**To:** Will Bamford; 'Rotorua Supervisor TMNZ'  
**Subject:** RE: Sculpture

Hi Will,

There is still one initial box unsigned on the ATWOSH unfortunately.

Monday should be fine for the VMS boards.

Please be aware that Futon Hogan will be working to repair the damaged Guardrail at the RAB on the night of the 13<sup>th</sup>,

As for VMS wording, it may read something along the line of:

ROAD WORKS  
HEMO  
12 – 13 SEP  
  
1900 – 2200  
EXPECT DELAYS

Cheers,

**Josh Coombes**  
Traffic Management Coordinator  
**Higgins** *showing the way*  
Higgins Contractors Limited  
334 Te Ngae DDI: 07 349 3804  
Road T: +64 27 297 1220  
PO Box 10167 [www.higgins.co.nz](http://www.higgins.co.nz)  
Rotorua 3046

This e-mail is privileged and confidential. If you are not the intended recipient please delete the message and notify the sender. Any views or opinions presented are solely those of the author. Higgins Group accepts no liability for any loss caused either directly or indirectly by a virus arising from the use of this message or any attached file.

---

**From:** Will Bamford <Will.Bamford@rotorualc.nz>  
**Sent:** Friday, 4 September 2020 1:14 PM  
**To:** Josh Coombes (Higgins) ; 'Rotorua Supervisor TMNZ'  
<supervisorrot@trafficmanagementnz.co.nz>  
**Subject:** RE: Sculpture

Hi Josh

Please see attached.

As per Warren's email earlier, do the VMS boards have to be out today to enable the crane install weekend 12<sup>th</sup>/13<sup>th</sup> Sept?

Cheers

Will

**Will Bamford** Kaea Hinonga – Senior Project Manager | **Ohu Haumarū** - Project Management & Risk Office  
[07 351 8217](tel:073518217) | [027 205 1794](tel:0272051794) | [will.bamford@rotorualc.nz](mailto:will.bamford@rotorualc.nz) | [rotorualakescouncil.nz](http://rotorualakescouncil.nz)

---

**From:** Will Bamford

**Sent:** Friday, 4 September 2020 12:31 pm

**To:** 'Josh Coombes (Higgins)'

; Rotorua Supervisor TMNZ

**Subject:** RE: Sculpture

Hi Josh

Tried to phone. Will organise forms. We see the options as:

1. Fly helixes to Te Puia Saturday morning (6:30am ish) and then install with crane at either 6:45am or 9pm;
2. If weather is bad Saturday. Fly helixes to Te Puia Sunday morning (6:30am ish) and then install with crane at 6:45am.

We don't want the sculpture sitting in the car park for more than 12-24 hours, so it's unlikely we would fly during the week 7<sup>th</sup> – 11<sup>th</sup> Sept.

We're hoping with the VMS boards installed Monday that we can still do the crane install weekend 12<sup>th</sup>/13<sup>th</sup> Sept?

Let's discuss.

Cheers

Will

**Will Bamford** Kaea Hinonga – Senior Project Manager | **Ohu Haumarū** - Project Management & Risk Office  
[07 351 8217](tel:073518217) | [027 205 1794](tel:0272051794) | [will.bamford@rotorualc.nz](mailto:will.bamford@rotorualc.nz) | [rotorualakescouncil.nz](http://rotorualakescouncil.nz)

---

**From:** Josh Coombes (Higgins)

**Sent:** Friday, 4 September 2020 12:20 pm

**To:** Rotorua Supervisor TMNZ

**Cc:** Will Bamford <[Will.Bamford@rotorualc.nz](mailto:Will.Bamford@rotorualc.nz)>

**Subject:** RE: Sculpture

Hi Warren,

Can you please have the designer place a provision for night works in the proforma for the crane operation? In addition, can we please get a Stop/Stop overview for the chopper lift? As this may occur days before the crane lift. This can be conducted prior to the weekend morning peak without the need for taper delineation.

**Will** – Can you please co-sign the portions of the ATWOSH that Kilwell has crossed out? These cannot be removed and will need to be assigned to an involved party (RLC).

Since the VMS boards will be out Monday, does this mean that the crane operation will be conducted late next week during night hours?

Thanks,

**Josh Coombes**

Traffic Management Coordinator

Higgins *showing the way*

Higgins Contractors Limited

334 Te Ngae DDI: 07 349 3804  
Road T: +64 27 297 1220  
PO Box 10167 [www.higgins.co.nz](http://www.higgins.co.nz)  
Rotorua 3046

This e-mail is privileged and confidential. If you are not the intended recipient please delete the message and notify the sender. Any views or opinions presented are solely those of the author. Higgins Group accepts no liability for any loss caused either directly or indirectly by a virus arising from the use of this message or any attached file.

---

**From:** Rotorua Supervisor TMNZ  
**Sent:** Friday, 4 September 2020 9:24 AM  
**To:** Josh Coombes (Higgins)  
**Subject:** FW: Sculpture

**Warren Lawrence**  
Rotorua Supervisor  
**Traffic Management NZ Ltd**  
82/84 Pururu Street, Rotorua  
PO Box 5600, Hamilton, Head Office  
Ph: **07 349 3139**, Mob: **027 491 9479**

**0800 53 22 22**

[www.trafficmanagementnz.co.nz](http://www.trafficmanagementnz.co.nz)

**Branches in: Whangarei - Auckland Central – Auckland South – Hamilton – Rotorua – Taupo – Tauranga - Palmerston North - Wellington – Christchurch**

This e-mail message and attachments are confidential to Traffic Management NZ Ltd and subject to legal privilege. If you have received this e-mail in error, please advise the sender immediately and delete the message and any attachments. If you are not the intended recipient you are notified that any use, distribution, amendment, copying or any action taken or omitted to be taken in reliance of this message or attachments is prohibited.



## Training Providers Throughout New Zealand

---

**From:** Rotorua Supervisor TMNZ  
**Sent:** Friday, 4 September 2020 9:24 a.m.  
**To:** Rotorua Supervisor TMNZ  
**Subject:** RE: Sculpture

Hi

Quick question

Do I need to be putting VMS boards out for the sculpture today?

**Warren Lawrence**  
Rotorua Supervisor  
**Traffic Management NZ Ltd**  
82/84 Pururu Street, Rotorua  
PO Box 5600, Hamilton, Head Office  
Ph: **07 349 3139**, Mob: **027 491 9479**

**0800 53 22 22**

[www.trafficmanagementnz.co.nz](http://www.trafficmanagementnz.co.nz)

**Branches in: Whangarei - Auckland Central – Auckland South – Hamilton – Rotorua – Taupo – Tauranga - Palmerston North - Wellington – Christchurch**

This e-mail message and attachments are confidential to Traffic Management NZ Ltd and subject to legal privilege. If you have received this e-mail in error, please advise the sender immediately and delete the message and any attachments. If you are not the intended recipient you are notified that any use, distribution, amendment, copying or any action taken or omitted to be taken in reliance of this message or attachments is prohibited.



## Training Providers Throughout New Zealand

---

**From:** Rotorua Supervisor TMNZ

**Sent:** Friday, 4 September 2020 8:01 a.m.

**To:** 'Josh Coombes (Higgins)'

**Subject:** Sculpture

Morning Josh

The masterpiece has returned. Ill leave you with it . Let me know if you require any thing

Good Luck

**Warren Lawrence**

Rotorua Supervisor

**Traffic Management NZ Ltd**

82/84 Pururu Street, Rotorua

PO Box 5600, Hamilton, Head Office

Ph: 07 349 3139, Mob: 027 491 9479

**0800 53 22 22**

[www.trafficmanagementnz.co.nz](http://www.trafficmanagementnz.co.nz)

**Branches in: Whangarei - Auckland Central – Auckland South – Hamilton – Rotorua – Taupo – Tauranga - Palmerston North - Wellington – Christchurch**

This e-mail message and attachments are confidential to Traffic Management NZ Ltd and subject to legal privilege. If you have received this e-mail in error, please advise the sender immediately and delete the message and any attachments. If you are not the intended recipient you are notified that any use, distribution, amendment, copying or any action taken or omitted to be taken in reliance of this message or attachments is prohibited.



## Training Providers Throughout New Zealand

---

**From:** Marc Spijkerbosch  
**Sent:** Monday, 7 September 2020 3:10 pm  
**To:** 'Shilton, Fred'  
**Subject:** RE: Hemo Roundabout Signage

Thanks Fred – appreciate this very much.  
I'll have a chat with the team and get in touch directly.  
Cheers  
Marc

**Marc Spijkerbosch** Community Arts Advisor  
P: 07 351 8154 | E: marc.spijkerbosch@rotorualc.nz | W: rotorualakescouncil.nz

---

**From:** Shilton, Fred <fred.shilton@wsp.com>  
**Sent:** Monday, 7 September 2020 2:33 PM  
**To:** Marc Spijkerbosch <Marc.Spijkerbosch@rotorualc.nz>  
**Cc:** Steyn, Stefan  
**Subject:** FW: Hemo Roundabout Signage

Hi Marc,  
Info below regarding the builder from Fulton Hogan and the landscape architect who produced the design was Stefan Steyn

**Stefan Steyn**

Landscape Architecture Team Leader - Napier

---

WSP Opus, Opus House, 6 Ossian Street, Napier 4110, New Zealand  
Private Bag 6019, Hawkes Bay Mail Centre, Napier 4142, New Zealand

📞 +64 6 833 5195 📠 +64 27 436 1708 ✉️ [Stefan.Steyn@wsp.com](mailto:Stefan.Steyn@wsp.com)

Regards

**Fred Shilton**  
Business Manager - Rotorua



T: +64 7 343 1405  
M: +64 27 499 9356  
[fred.shilton@wsp.com](mailto:fred.shilton@wsp.com)

WSP  
1105 Arawa St  
Rotorua 3010  
New Zealand

[wsp.com/nz](http://wsp.com/nz)



Shaping  
the future  
of Aotearoa  
since 1870

---

**From:** SNOW, Daniel  
**Sent:** Monday, 7 September 2020 2:11 PM  
**To:** Shilton, Fred <fred.shilton@wsp.com>  
**Cc:** Marc Spijkerbosch <Marc.Spijkerbosch@rotorualc.nz>  
**Subject:** RE: Hemo Roundabout Signage

Hi Fred,

Contact Rowan Edwards at Edwards Fencing 027 457 5602.

Cheers

**Daniel Snow** | Project Manager | **Fulton Hogan Ltd** | PO Box 10139, Rotorua 3046 | Phone  
07 345 9480 | Web [www.fultonhogan.com](http://www.fultonhogan.com)

---

**From:** Shilton, Fred <fred.shilton@wsp.com>  
**Sent:** Monday, 7 September 2020 12:58 PM  
**To:** SNOW, Daniel  
**Cc:** Marc Spijkerbosch <Marc.Spijkerbosch@rotorualc.nz>  
**Subject:** FW: Hemo Roundabout Signage

Hi Dan,  
Do you have the name of the builder who installed the battens for the underpass's at Hemo.  
Cheers

**Fred Shilton**  
Business Manager - Rotorua



T: +64 7 343 1405  
M: +64 27 499 9356  
[fred.shilton@wsp.com](mailto:fred.shilton@wsp.com)

WSP  
1105 Arawa St  
Rotorua 3010  
New Zealand

[wsp.com/nz](http://wsp.com/nz)



Shaping  
the future  
of Aotearoa  
since 1870

---

**From:** Marc Spijkerbosch <Marc.Spijkerbosch@rotorualc.nz>  
**Sent:** Monday, 7 September 2020 8:42 AM



**To:** Shilton, Fred <fred.shilton@wsp.com>

**Subject:** Hemo Roundabout Signage

Morning Fred

Our comms team is looking at options around the sculpture signage to be installed in the roundabout.

They're keen to match in with the other artistic enhancements which were put in originally i.e. the coloured timber battens etc

Would you have a contact for the artist or builders we could touch base with?

Thanks heaps

Marc

---

**Marc Spijkerbosch** *Community Arts Advisor*

**P:** 07 351 8154

**E:** marc.spijkerbosch@rotorualc.nz | **W:** rotorualakescouncil.nz

**A:** 1061 Haupapa St, Private Bag 3029, Rotorua Mail Centre, Rotorua 3046, New Zealand

---

NOTICE: This communication and any attachments ("this message") may contain information which is privileged, confidential, proprietary or otherwise subject to restricted disclosure under applicable law. This message is for the sole use of the intended recipient(s). Any unauthorized use, disclosure, viewing, copying, alteration, dissemination or distribution of, or reliance on, this message is strictly prohibited. If you have received this message in error, or you are not an authorized or intended recipient, please notify the sender immediately by replying to this message, delete this message and all copies from your e-mail system and destroy any printed copies.

[Click here to report this email as spam.]  
Fulton Hogan email is protected by Forcepoint.

-----  
Fulton Hogan is a dynamic, diversified contracting company active in New Zealand, Australia and the Pacific Basin. Constituent divisions represent a broad range of products and services in the roading, quarrying and civil construction sector, and hold strong positions in their respective markets. <http://www.fultonhogan.com>

Get on the Road to Success. For career opportunities within Fulton Hogan navigate to <http://www.fultonhogancareers.com>

Fulton Hogan may collect, use and disclose personal information about you so we can perform our business activities and functions and provide quality customer services. You can view our Privacy Statement at <https://www.fultonhogan.com/privacy-policy/>

**IMPORTANT NOTICE:** This is an email from Fulton Hogan. We do not accept responsibility for any changes to this email or its attachments made after we have transmitted it. We do not accept responsibility for attachments made by others to this email.

**CONFIDENTIALITY:** The contents of this email (including any attachments) may be privileged and confidential. Any unauthorised use of the contents is expressly prohibited. If you have received this email in error, please advise us immediately and then delete this email together with all attachments.

**VIRUSES:** Fulton Hogan does not represent or warrant that files attached to this email are free from computer viruses or other defects. Any attached files are provided, and may only be used on the basis that the user accepts all responsibility for any loss, damage or consequence resulting directly or indirectly from use of the attached files. The liability of Fulton Hogan is limited in any event to the resupply of the attached files.

---

---

**From:** Josh Coombes (Higgins) <J.Coombes@higgins.co.nz>  
**Sent:** Wednesday, 9 September 2020 2:16 pm  
**To:** Will Bamford  
**Cc:** Rotorua Supervisor TMNZ  
**Subject:** Hemo RAB  
**Attachments:** TMNZ-ROT-200039-FULL (TMD).pdf; 1219 Hemo Sculpture TMP Install V1 (1).pdf; Hemo ATWOSH.pdf

Good afternoon Will,

Please see attached approval for the sculpture install at the Hemo Gorge RAB.

Any questions, please ask.

Thanks,

**Josh Coombes**  
Traffic Management Coordinator  
**Higgins** *showing the way*  
Higgins Contractors Limited  
334 Te DDI: 07 349 3804  
Ngae T: +64 27 297 1220  
Road [www.higgins.co.nz](http://www.higgins.co.nz)  
PO Box  
10167  
Rotorua  
3046

This e-mail is privileged and confidential. If you are not the intended recipient please delete the message and notify the sender. Any views or opinions presented are solely those of the author. Higgins Group accepts no liability for any loss caused either directly or indirectly by a virus arising from the use of this message or any attached file.



---

**From:** Will Bamford  
**Sent:** Wednesday, 9 September 2020 2:31 pm  
**To:** 'Josh Coombes (Higgins)'  
**Cc:** Rotorua Supervisor TMNZ  
**Subject:** RE: Hemo RAB

Awesome

Thanks Josh

This is great news. Thank you for all your hard work on this!

Cheers

Will

**Will Bamford** Kaea Hinonga – Senior Project Manager | *Ohu Haumarū* - Project Management & Risk Office  
07 351 8217 | 027 205 1794 | [will.bamford@rotorualc.nz](mailto:will.bamford@rotorualc.nz) | [rotorualakescouncil.nz](http://rotorualakescouncil.nz)

---

**From:** Josh Coombes (Higgins)  
**Sent:** Wednesday, 9 September 2020 2:16 pm  
**To:** Will Bamford <Will.Bamford@rotorualc.nz>  
**Cc:** Rotorua Supervisor TMNZ  
**Subject:** Hemo RAB

Good afternoon Will,

Please see attached approval for the sculpture install at the Hemo Gorge RAB.

Any questions, please ask.

Thanks,

**Josh Coombes**  
Traffic Management Coordinator  
**Higgins** *showing the way*  
Higgins Contractors Limited  
334 Te DDI: 07 349 3804  
Ngae T: +64 27 297 1220  
Road [www.higgins.co.nz](http://www.higgins.co.nz)  
PO Box  
10167  
Rotorua  
3046

This e-mail is privileged and confidential. If you are not the intended recipient please delete the message and notify the sender. Any views or opinions presented are solely those of the author. Higgins Group accepts no liability for any loss caused either directly or indirectly by a virus arising from the use of this message or any attached file.



---

**From:** Marc Spijkerbosch  
**Sent:** Wednesday, 9 September 2020 4:09 pm  
**To:** 'Shilton, Fred'  
**Cc:** Will Bamford  
**Subject:** RE: Site map request - Hemo

Brilliant, thanks Fred.  
I'm sure these will be just fine.

Cheers

**Marc Spijkerbosch** Community Arts Advisor  
P: 07 351 8154 | E: marc.spijkerbosch@rotorualc.nz | W: rotorualakescouncil.nz

---

**From:** Shilton, Fred <fred.shilton@wsp.com>  
**Sent:** Wednesday, 9 September 2020 3:58 PM  
**To:** Marc Spijkerbosch <Marc.Spijkerbosch@rotorualc.nz>  
**Cc:** Will Bamford <Will.Bamford@rotorualc.nz>  
**Subject:** RE: Site map request - Hemo

Here is the plan that shows the location of the foundation for the sculpture within the Roundabout and some of the concept drawings from the original tender process with elevations.

**Fred Shilton**  
Business Manager - Rotorua



T: +64 7 343 1405  
M: +64 27 499 9356  
fred.shilton@wsp.com

WSP  
1105 Arawa St  
Rotorua 3010  
New Zealand

[wsp.com/nz](http://wsp.com/nz)



Shaping  
the future  
of Aotearoa  
since 1870

---

**From:** Marc Spijkerbosch <Marc.Spijkerbosch@rotorualc.nz>  
**Sent:** Wednesday, 9 September 2020 11:22 AM  
**To:** Shilton, Fred <fred.shilton@wsp.com>  
**Cc:** Will Bamford <will.bamford@rotorualc.nz>  
**Subject:** Site map request - Hemo

Hi Fred

Will is just putting some paperwork together for in-house assessment and wondered if you might be able to supply a site map of the Hemo Gorge roundabout? I don't appear to have anything suitable here.

I think this is all we need, though possibly some elevations as well - Will can advise if so.

Really appreciate your time, and huge thanks in advance

Marc

---

---

**Marc Spijkerbosch** *Community Arts Advisor*

**P:** 07 351 8154

**E:** [marc.spijkerbosch@rotorualc.nz](mailto:marc.spijkerbosch@rotorualc.nz) | **W:** [rotorualakescouncil.nz](http://rotorualakescouncil.nz)

**A:** 1061 Haupapa St, Private Bag 3029, Rotorua Mail Centre, Rotorua 3046, New Zealand

---

---



---

NOTICE: This communication and any attachments ("this message") may contain information which is privileged, confidential, proprietary or otherwise subject to restricted disclosure under applicable law. This message is for the sole use of the intended recipient(s). Any unauthorized use, disclosure, viewing, copying, alteration, dissemination or distribution of, or reliance on, this message is strictly prohibited. If you have received this message in error, or you are not an authorized or intended recipient, please notify the sender immediately by replying to this message, delete this message and all copies from your e-mail system and destroy any printed copies.



---

**From:** Will Bamford  
**Sent:** Wednesday, 9 September 2020 5:01 pm  
**To:** Shilton, Fred  
**Cc:** Stewart Brown  
**Subject:** RE: [SUSPICIOUS MESSAGE] RE: Te Ahi Tupua (Hemo Sculpture) PS4

Thanks for the quick response Fred!

I'll investigate!

Will

Sent from my Samsung Galaxy smartphone.

----- Original message -----

**From:** "Shilton, Fred" <fred.shilton@wsp.com>  
**Date:** 9/09/20 4:50 PM (GMT+12:00)  
**To:** Will Bamford <Will.Bamford@rotorualc.nz>  
**Subject:** [SUSPICIOUS MESSAGE] RE: Te Ahi Tupua (Hemo Sculpture) PS4

**This Message contains suspicious characteristics and has originated outside your organization.**

---

Hi Will,

From what I have seen on site at Kilwell's the base plate has been modified from the original design as they have tried to remove some weight out of it. When I was on-site the other week I suggested they put the sections that have been removed back, I also noted that the sections removed had three bolt holes each that will no longer be able to be fixed to the foundation. I don't think we will be able to sign off the base plate as it has been modified and any case it essentially forms part of the sculpture structure.

Nothing like picking up a project near the end of its life right 😊

**Fred Shilton**  
Business Manager - Rotorua



T: +64 7 343 1405  
M: +64 27 499 9356  
fred.shilton@wsp.com

WSP  
1105 Arawa St  
Rotorua 3010  
New Zealand

[wsp.com/nz](http://wsp.com/nz)



Shaping  
the future  
of Aotearoa  
since 1870

---

**From:** Will Bamford <Will.Bamford@rotorualc.nz>  
**Sent:** Wednesday, 9 September 2020 4:44 PM  
**To:** Darrell Holder <Darrell.Holder@rotorualc.nz>; Charlie Sefuiva  
**Cc:** Shilton, Fred <fred.shilton@wsp.com>; Stewart Brown <Stewart.Brown@rotorualc.nz>  
**Subject:** FW: Te Ahi Tupua (Hemo Sculpture) PS4

Hi Darrell and Charlie

Would a ps4 to cm1 level meet requirements?

**Fred**, keen to discuss again about the base plate!

Cheers

Will

Sent from my Samsung Galaxy smartphone.

----- Original message -----

**From:** James Ledingham  
**Date:** 9/09/20 4:39 PM (GMT+12:00)  
**To:** Will Bamford <Will.Bamford@rotorualc.nz>  
**Cc:** "craigw@kilwell.co.nz" <craigw@kilwell.co.nz>, Stewart Brown <Stewart.Brown@rotorualc.nz>, Tony Stanton  
**Subject:** RE: Te Ahi Tupua (Hemo Sculpture) PS4

Hi Will,

Good to chat earlier.

From our perspective we would be comfortable signing off a PS4 to CM1 level. This is on the basis of the site visits we have made, the testing done at Scion, and our regular communications with Kilwell in relation to interpretation of the specifications during construction.

I will plan to come down to Rotorua on Friday afternoon to do a final inspection of the sculpture and go over some of the QA information with Kilwell prior to issuing the PS4. (It is going to be easier to have a look over the sculpture before it is installed on site)

We would prefer if WSP/OPUS, or another party, was able to provide a PS4 for the baseplate/plinth connection as we did not engineer this component and are not well versed enough in metal/concrete design to sign off on this.

Let me know if this will meet your requirements.

Thanks

James

---

**From:** Will Bamford <Will.Bamford@rotorualc.nz>  
**Sent:** Wednesday, 9 September 2020 3:42 pm  
**To:** James Ledingham

Cc: 'craigw@kilwell.co.nz' <craigw@kilwell.co.nz>; Stewart Brown <Stewart.Brown@rotorualc.nz>  
Subject: Te Ahi Tupua (Hemo Sculpture) PS4

This message was sent from outside Gurit organisation. Please do not click links or open attachments unless you recognise the source of this email and know the content is safe.

Kia ora James

How are you?

As discussed, my name is Will. I am a project manager for Rotorua Lakes Council. I am helping out with the Te Ahi Tupua project.

I phoned to see if you/Gurit would be comfortable signing off a partial PS4 for the sculpture. Essentially the PS4 would cover off that the structure is safe, to the extent to which you can reasonably verify from the inspections undertaken.

You m undertook a few inspections during construction and were happy with what you saw during those. You are planning to be onsite during the installation so will be able to do an external inspection of the structure to verify if you are satisfied it has been constructed in accordance with the PS1 documents and the connection to the plinth is as per your requirements.

You felt like this should be ok but you are going to talk with your manager to see if it is achievable or not.

Please let me know if you have any queries and hopefully see you Saturday!

Will

---

**Will Bamford** Kaea Hinonga – Senior Project Manager | *Ohu Haumarū* - Project Management & Risk  
Office

Waea: 07 351 8217 | Waea Pūkoro: 027 205 1794

Imera: [will.bamford@rotorualc.nz](mailto:will.bamford@rotorualc.nz) | Ipurangi: [rotorualakescouncil.nz](http://rotorualakescouncil.nz)

Taunga: 1061 Haupapa St, Private Bag 3029, Rotorua Mail Centre, Rotorua 3046, New Zealand

**ROTORUA**  
LAKES COUNCIL

---

NOTICE: This communication and any attachments ("this message") may contain information which is privileged, confidential, proprietary or otherwise subject to restricted disclosure under applicable law. This message is for the sole use of the intended recipient(s). Any unauthorized use, disclosure, viewing, copying, alteration, dissemination or distribution of, or reliance on, this message is strictly prohibited. If you have received this message in error, or you are not an authorized or intended recipient, please notify the sender immediately by replying to this message, delete this message and all copies from your e-mail system and destroy any printed copies.



---

**From:** Josh Coombes (Higgins)  
**Sent:** Thursday, 10 September 2020 7:21 am  
**To:** Will Bamford; supervisorrot@trafficmanagementnz.co.nz  
**Cc:** Mandy Godo  
**Subject:** RE: Sculpture Lift - Hemo Roundabout

Good morning Will,

I would be happy for the fly-over location to be amended slightly without the need for an additional TMP. Though this would need to be recorded on any On Site Records completed by TMNZ on the day.

Thanks,

Josh Coombes  
Traffic Management Coordinator  
Higgins showing the way  
Higgins Contractors Limited  
334 Te Ngae Road  
PO Box 10167  
Rotorua 3046

DDI: 07 349 3804  
T: +64 27 297 1220  
[www.higgins.co.nz](http://www.higgins.co.nz)

This e-mail is privileged and confidential. If you are not the intended recipient please delete the message and notify the sender. Any views or opinions presented are solely those of the author. Higgins Group accepts no liability for any loss caused either directly or indirectly by a virus arising from the use of this message or any attached file.

-----Original Message-----

**From:** Will Bamford <Will.Bamford@rotorualc.nz>  
**Sent:** Thursday, 10 September 2020 6:29 AM  
**To:** supervisorrot@trafficmanagementnz.  
**Cc:** Mandy Godo Josh Coombes (Higgins)  
**Subject:** FW: Sculpture Lift - Hemo Roundabout

Hi Warren

How are you?

Just when we thought it was all sorted! I've asked Josh if it's ok- but would it be an issue to amend TMP to cross slightly south of airport as per photo in below emails?

It looks like it could be simpler to manage being a bit further away from airport?

Will

Sent from my Samsung Galaxy smartphone.

----- Original message -----

From: Will Bamford <Will.Bamford@rotorualc.nz>  
Date: 10/09/20 6:24 AM (GMT+12:00)  
To: Mark Law Logan Charters-Leahy <Logan.Charters-Leahy@rotorua-airport.co.nz>  
Cc: "Josh Coombes (Higgins)" Mandy Godo  
Subject: RE: Sculpture Lift - Hemo Roundabout

Hi Mark and Logan

Thanks for email. It makes sense. Just unsure how difficult it is to change the TMP plans. I'll talk with NZTA/Higgins first thing.

Josh/mandy - please read email train so we can discuss thos morning. Hopefully it isn't an issue to amend?

Cheers

Will

Sent from my Samsung Galaxy smartphone.

----- Original message -----

From: Mark Law <mark@kahu.nz>  
Date: 10/09/20 5:13 AM (GMT+12:00)  
To: Logan Charters-Leahy <Logan.Charters-Leahy@rotorua-airport.co.nz>  
Cc: Will Bamford <Will.Bamford@rotorualc.nz>  
Subject: Re: Sculpture Lift - Hemo Roundabout

Hi Logan,

I am in Kerikeri working and won't be able to chat for a while. I have updated Will and have CC'd him in this email. The question is can we amened NZTA's traffic management plan today and Friday for Saturday.

Logan please contact Will re this request. As mentioned I don't have a problem.

I will be back on comms after midday today and can call.

Kind regards,

---

From: Logan Charters-Leahy <Logan.Charters-Leahy@rotorua-airport.co.nz>  
Sent: Wednesday, 9 September 2020 11:27 PM  
To: Mark Law  
Subject: Fwd: Sculpture Lift - Hemo Roundabout

Hi Mark,

RE your published plan. Would it be possible for you to deviate your flight plan to the below mentioned diagram.

Thanks,

Logan Charters Leahy

Airport Operations Manager

A: 837 Te Ngae Road, State Highway 30,  
PO Box 7221, Rotorua New Zealand

W: rotorua-airport.co.nz<<https://www.rotorua-airport.co.nz/>>

[cid:F9D49256-9645-4FFB-A1AF-868037278CFE]

Begin forwarded message:

From: Jayne Marsh <Jayne.Marsh@rotorua-airport.co.nz>  
Date: 9 September 2020 at 10:06:05 NZST  
To: Logan Charters-Leahy <Logan.Charters-Leahy@rotorua-airport.co.nz>  
Subject: RE: Sculpture Lift - Hemo Roundabout

Hi Logan,

Agree with your comments below, perhaps this is a safer flight path (with sculpture attached) in the vicinity of the airport:

[cid:image001.jpg@01D68690.D2BD1CF0]

Kind Regards,

Jayne Marsh

Manager Safety Management Systems

From: Logan Charters-Leahy  
Sent: Wednesday, 9 September 2020 9:15 AM  
To: Jayne Marsh <Jayne.Marsh@rotorua-airport.co.nz>  
Subject: FW: Sculpture Lift - Hemo Roundabout

For your input.

Not sure how keen I am to have a sculpture flown over the airport buildings. I would prefer if it goes over the RESA and over the Badlands. Not the runway or buildings.

Thanks,

Logan Charters Leahy

Airport Operations Manager

A: 837 Te Ngae Road, State Highway 30,  
PO Box 7221, Rotorua New Zealand

W: rotorua-airport.co.nz<<https://www.rotorua-airport.co.nz>>

[cid:F9D49256-9645-4FFB-A1AF-868037278CFE]

From: Vincent, Lorraine  
Sent: Wednesday, 9 September 2020 8:58 am  
To: Logan Charters-Leahy <Logan.Charters-Leahy@rotorua-airport.co.nz<mailto:Logan.Charters-Leahy@rotorua-airport.co.nz>>  
Subject: FW: Sculpture Lift - Hemo Roundabout

FYI,



From: Mark Law  
Sent: Friday, 4 September 2020 8:24 AM  
To: Vincent, Lorraine  
Subject: Sculpture Lift - Hemo Roundabout

Hi Lorraine,

I have been chatting to Wayne and Logan about the upcoming Sculpture lift from Kilwell to Hemo Roundabout. Its been planned for this Sunday (weather and NZTA permitting). If not its the following weekend. We are lifting the (2) sculptures with the Black Hawk.

Anyhow I wanted to keep you and your team in the loop with the plan of what we are doing so you have a heads up. Even though we are looking to fly it before 0800 hours Sunday, like all plans and aviation, things can change. I have attached the plan which has been created by the council with our input and planning.

We are yet undecided if we are looking to fly over in the morning or fly over and stage on Saturday. If so we are looking to operate down by Volcanic. Tim knows whats going on also. We will be mindful of lite aircraft in the vicinity.

Kind regards,

Mark Law

CEO, Chief Pilot

0800 804 354 / 027 435 0664

[www.kahu.nz](http://www.kahu.nz)<<http://www.kahu.nz/>>

[cid:image005.png@01D68690.B5FD3050]

Your communications are important to us and we take appropriate measures to access, store and scan for information assurance.

This electronic message together with any attachments is confidential. If you receive it in error: (i) you must not use, disclose, copy or retain it; (ii) please contact the sender immediately by reply email and then delete the emails. Views expressed in this email may not be those of the Airways Corporation of New Zealand Limited.



---

**From:** Shilton, Fred <fred.shilton@wsp.com>  
**Sent:** Thursday, 10 September 2020 11:38 am  
**To:** Will Bamford  
**Cc:** Stewart Brown  
**Subject:** [SUSPICIOUS MESSAGE] RE: Te Ahi Tupua (Hemo Sculpture) PS4

**This Message contains suspicious characteristics and has originated outside your organization.**

---

Hi Will,  
Yes the foundation construction was monitored for compliance, I will see what I can find in the project folders.

**Fred Shilton**  
Business Manager - Rotorua



T: +64 7 343 1405  
M: +64 27 499 9356  
fred.shilton@wsp.com

WSP  
1105 Arawa St  
Rotorua 3010  
New Zealand

[wsp.com/nz](http://wsp.com/nz)



**Shaping  
the future  
of Aotearoa  
since 1870**

*Take life back & make flexibility work – if you receive an email from me outside of normal business hours.  
I'm sending at a time that works in with my day. I'm not expecting you to respond until normal business hours.*

---

**From:** Will Bamford <Will.Bamford@rotorualc.nz>  
**Sent:** Thursday, 10 September 2020 11:32 AM  
**To:** Shilton, Fred <fred.shilton@wsp.com>  
**Cc:** Stewart Brown <Stewart.Brown@rotorualc.nz>  
**Subject:** RE: Te Ahi Tupua (Hemo Sculpture) PS4

Hi Fred

You're not wrong!

I've spoken with Gurit and they will cover off the modified baseplate and bolt connection to the plinth.

Graeme's PS1 refers to CM2 monitoring. I know it's a bit messy as your PS1 covered off both the plinth and the sculpture, which then changed. Was monitoring undertaken for the plinth pour? It would be great to please get a copy of any monitoring/site visit records from the pour, etc to ensure all is to spec?

Happy to discuss.

Cheers

Will

**Will Bamford** Kaea Hinonga – Senior Project Manager | *Ohu Haumarū* - Project Management & Risk Office  
07 351 8217 | 027 205 1794 | [will.bamford@rotorualc.nz](mailto:will.bamford@rotorualc.nz) | [rotorualakescouncil.nz](http://rotorualakescouncil.nz)

---

**From:** Shilton, Fred <[fred.shilton@wsp.com](mailto:fred.shilton@wsp.com)>  
**Sent:** Wednesday, 9 September 2020 4:50 pm  
**To:** Will Bamford <[Will.Bamford@rotorualc.nz](mailto:Will.Bamford@rotorualc.nz)>  
**Subject:** [SUSPICIOUS MESSAGE] RE: Te Ahi Tupua (Hemo Sculpture) PS4

**This Message contains suspicious characteristics and has originated outside your organization.**

---

Hi Will,

From what I have seen on site at Kilwell's the base plate has been modified from the original design as they have tried to remove some weight out of it. When I was on-site the other week I suggested they put the sections that have been removed back, I also noted that the sections removed had three bolt holes each that will no longer be able to be fixed to the foundation. I don't think we will be able to sign off the base plate as it has been modified and any case it essentially forms part of the sculpture structure.

Nothing like picking up a project near the end of its life right 😊

**Fred Shilton**  
Business Manager - Rotorua



T: +64 7 343 1405  
M: +64 27 499 9356  
[fred.shilton@wsp.com](mailto:fred.shilton@wsp.com)

WSP  
1105 Arawa St  
Rotorua 3010  
New Zealand

[wsp.com/nz](http://wsp.com/nz)



Shaping  
the future  
of Aotearoa  
since 1870

---

**From:** Will Bamford <[Will.Bamford@rotorualc.nz](mailto:Will.Bamford@rotorualc.nz)>  
**Sent:** Wednesday, 9 September 2020 4:44 PM  
**To:** Darrell Holder  
Charlie Sefuiva  
**Cc:** Shilton, Fred <[fred.shilton@wsp.com](mailto:fred.shilton@wsp.com)>; Stewart Brown <[Stewart.Brown@rotorualc.nz](mailto:Stewart.Brown@rotorualc.nz)>  
**Subject:** FW: Te Ahi Tupua (Hemo Sculpture) PS4

Hi Darrell and Charlie

Would a ps4 to cm1 level meet requirements?

Fred, keen to discuss again about the base plate!

Cheers

Will

Sent from my Samsung Galaxy smartphone.

----- Original message -----

From: James Ledingham

Date: 9/09/20 4:39 PM (GMT+12:00)

To: Will Bamford <Will.Bamford@rotorualc.nz>

Cc: "craigw@kilwell.co.nz" <craigw@kilwell.co.nz>, Stewart Brown <Stewart.Brown@rotorualc.nz>, Tony Stanton

Subject: RE: Te Ahi Tupua (Hemo Sculpture) PS4

Hi Will,

Good to chat earlier.

From our perspective we would be comfortable signing off a PS4 to CM1 level. This is on the basis of the site visits we have made, the testing done at Scion, and our regular communications with Kilwell in relation to interpretation of the specifications during construction.

I will plan to come down to Rotorua on Friday afternoon to do a final inspection of the sculpture and go over some of the QA information with Kilwell prior to issuing the PS4. (It is going to be easier to have a look over the sculpture before it is installed on site)

We would prefer if WSP/OPUS, or another party, was able to provide a PS4 for the baseplate/plinth connection as we did not engineer this component and are not well versed enough in metal/concrete design to sign off on this.

Let me know if this will meet your requirements.

Thanks

James

---

**From:** Will Bamford <Will.Bamford@rotorualc.nz>

**Sent:** Wednesday, 9 September 2020 3:42 pm

**To:** James Ledingham

**Cc:** 'craigw@kilwell.co.nz' <craigw@kilwell.co.nz>; Stewart Brown <Stewart.Brown@rotorualc.nz>

**Subject:** Te Ahi Tupua (Hemo Sculpture) PS4

This message was sent from outside Gurit organisation. Please do not click links or open attachments unless you recognise the source of this email and know the content is safe.

Kia ora James

How are you?

As discussed, my name is Will. I am a project manager for Rotorua Lakes Council. I am helping out with the Te Ahi Tupua project.

I phoned to see if you/Gruit would be comfortable signing off a partial PS4 for the sculpture. Essentially the PS4 would cover off that the structure is safe, to the extent to which you can reasonably verify from the inspections undertaken.

You m undertook a few inspections during construction and were happy with what you saw during those. You are planning to be onsite during the installation so will be able to do an external inspection of the structure to verify if you are satisfied it has been constructed in accordance with the PS1 documents and the connection to the plinth is as per your requirements.

You felt like this should be ok but you are going to talk with your manager to see if it is achievable or not.

Please let me know if you have any queries and hopefully see you Saturday!

Will

---

**Will Bamford** Kaea Hinonga – Senior Project Manager | *Ohu Haumarū - Project Management & Risk Office*

Waea: 07 351 8217 | Waea Pūkoro: 027 205 1794

Īmera: [will.bamford@rotorualc.nz](mailto:will.bamford@rotorualc.nz) | Ipurangi: [rotorualakescouncil.nz](http://rotorualakescouncil.nz)

Taunga: 1061 Haupapa St, Private Bag 3029, Rotorua Mail Centre, Rotorua 3046, New Zealand

---

**ROTORUA**  
LAKES COUNCIL

---

NOTICE: This communication and any attachments ("this message") may contain information which is privileged, confidential, proprietary or otherwise subject to restricted disclosure under applicable law. This message is for the sole use of the intended recipient(s). Any unauthorized use, disclosure, viewing, copying, alteration, dissemination or distribution of, or reliance on, this message is strictly prohibited. If you have received this message in error, or you are not an authorized or intended recipient, please notify the sender immediately by replying to this message, delete this message and all copies from your e-mail system and destroy any printed copies.

---

**From:** Will Bamford  
**Sent:** Friday, 11 September 2020 6:07 am  
**To:** Shilton, Fred  
**Cc:** Stewart Brown  
**Subject:** RE: [SUSPICIOUS MESSAGE] RE: Te Ahi Tupua (Hemo Sculpture) PS4

Awesome

Thank you Fred. We may want a PS4. I'll let you know- can sort next week!

Will

Sent from my Samsung Galaxy smartphone.

----- Original message -----

**From:** "Shilton, Fred" <fred.shilton@wsp.com>  
**Date:** 10/09/20 9:48 PM (GMT+12:00)  
**To:** Will Bamford <Will.Bamford@rotorualc.nz>  
**Cc:** Stewart Brown <Stewart.Brown@rotorualc.nz>  
**Subject:** [SUSPICIOUS MESSAGE] RE: Te Ahi Tupua (Hemo Sculpture) PS4

**This Message contains suspicious characteristics and has originated outside your organization.**

---

Hi Will,  
Here are the inspection info for the sculpture foundation, we haven't completed a PS4 for this but can do.  
Regards

**Fred Shilton**  
Business Manager - Rotorua



T: +64 7 343 1405  
M: +64 27 499 9356  
fred.shilton@wsp.com

WSP  
1105 Arawa St  
Rotorua 3010  
New Zealand

[wsp.com/nz](http://wsp.com/nz)



Shaping  
the future  
of Aotearoa  
since 1870

*Take life back & make flexibility work – if you receive an email from me outside of normal business hours.  
I'm sending at a time that works in with my day. I'm not expecting you to respond until normal business hours.*

---

**From:** Will Bamford <Will.Bamford@rotorualc.nz>  
**Sent:** Thursday, 10 September 2020 11:32 AM  
**To:** Shilton, Fred <fred.shilton@wsp.com>  
**Cc:** Stewart Brown <Stewart.Brown@rotorualc.nz>  
**Subject:** RE: Te Ahi Tupua (Hemo Sculpture) PS4

Hi Fred

You're not wrong!

I've spoken with Gurit and they will cover off the modified baseplate and bolt connection to the plinth.

Graeme's PS1 refers to CM2 monitoring. I know it's a bit messy as your PS1 covered off both the plinth and the sculpture, which then changed. Was monitoring undertaken for the plinth pour? It would be great to please get a copy of any monitoring/site visit records from the pour, etc to ensure all is to spec?

Happy to discuss.

Cheers

Will

---

**Will Bamford** Kaea Hinonga – Senior Project Manager | **Ohu Haumarū** - Project Management & Risk Office  
07 351 8217 | 027 205 1794 | [will.bamford@rotorualc.nz](mailto:will.bamford@rotorualc.nz) | [rotorualakescouncil.nz](http://rotorualakescouncil.nz)

---

**From:** Shilton, Fred <fred.shilton@wsp.com>  
**Sent:** Wednesday, 9 September 2020 4:50 pm  
**To:** Will Bamford <Will.Bamford@rotorualc.nz>  
**Subject:** [SUSPICIOUS MESSAGE] RE: Te Ahi Tupua (Hemo Sculpture) PS4

**This Message contains suspicious characteristics and has originated outside your organization.**

---

Hi Will,  
From what I have seen on site at Kilwell's the base plate has been modified from the original design as they have tried to remove some weight out of it. When I was on-site the other week I suggested they put the sections that have been removed back, I also noted that the sections removed had three bolt holes each that will no longer be able to be fixed to the foundation. I don't think we will be able to sign off the base plate as it has been modified and any case it essentially forms part of the sculpture structure.

Nothing like picking up a project near the end of its life right 😊

**Fred Shilton**  
Business Manager - Rotorua



T: +64 7 343 1405  
M: +64 27 499 9356  
[fred.shilton@wsp.com](mailto:fred.shilton@wsp.com)

WSP  
1105 Arawa St  
Rotorua 3010  
New Zealand

[wsp.com/nz](http://wsp.com/nz)





Shaping  
the future  
of Aotearoa  
since 1870

**From:** Will Bamford <Will.Bamford@rotorualc.nz>  
**Sent:** Wednesday, 9 September 2020 4:44 PM  
**To:** Darrell Holder <Darrell.Holder@rotorualc.nz>; Charlie Sefuiva <Charlie.Sefuiva@rotorualc.nz>  
**Cc:** Shilton, Fred <fred.shilton@wsp.com>; Stewart Brown <Stewart.Brown@rotorualc.nz>  
**Subject:** FW: Te Ahi Tupua (Hemo Sculpture) PS4

Hi Darrell and Charlie

Would a ps4 to cm1 level meet requirements?

Fred, keen to discuss again about the base plate!

Cheers

Will

Sent from my Samsung Galaxy smartphone.

----- Original message -----

**From:** James Ledingham  
**Date:** 9/09/20 4:39 PM (GMT+12:00)  
**To:** Will Bamford <Will.Bamford@rotorualc.nz>  
**Cc:** "craigw@kilwell.co.nz" <craigw@kilwell.co.nz>, Stewart Brown <Stewart.Brown@rotorualc.nz>, Tony Stanton  
**Subject:** RE: Te Ahi Tupua (Hemo Sculpture) PS4

Hi Will,

Good to chat earlier.

From our perspective we would be comfortable signing off a PS4 to CM1 level. This is on the basis of the site visits we have made, the testing done at Scion, and our regular communications with Kilwell in relation to interpretation of the specifications during construction.

I will plan to come down to Rotorua on Friday afternoon to do a final inspection of the sculpture and go over some of the QA information with Kilwell prior to issuing the PS4. (It is going to be easier to have a look over the sculpture before it is installed on site)

We would prefer if WSP/OPUS, or another party, was able to provide a PS4 for the baseplate/plinth connection as we did not engineer this component and are not well versed enough in metal/concrete design to sign off on this.

Let me know if this will meet your requirements.

Thanks

James

**From:** Will Bamford <Will.Bamford@rotorualc.nz>  
**Sent:** Wednesday, 9 September 2020 3:42 pm  
**To:** James Ledingham  
**Cc:** 'craigw@kilwell.co.nz' <craigw@kilwell.co.nz>; Stewart Brown <Stewart.Brown@rotorualc.nz>  
**Subject:** Te Ahi Tupua (Hemo Sculpture) PS4

This message was sent from outside Gurit organisation. Please do not click links or open attachments unless you recognise the source of this email and know the content is safe.

Kia ora James

How are you?

As discussed, my name is Will. I am a project manager for Rotorua Lakes Council. I am helping out with the Te Ahi Tupua project.

I phoned to see if you/Gurit would be comfortable signing off a partial PS4 for the sculpture. Essentially the PS4 would cover off that the structure is safe, to the extent to which you can reasonably verify from the inspections undertaken.

You m undertook a few inspections during construction and were happy with what you saw during those. You are planning to be onsite during the installation so will be able to do an external inspection of the structure to verify if you are satisfied it has been constructed in accordance with the PS1 documents and the connection to the plinth is as per your requirements.

You felt like this should be ok but you are going to talk with your manager to see if it is achievable or not.

Please let me know if you have any queries and hopefully see you Saturday!

Will

---

**Will Bamford** Kaea Hinonga – Senior Project Manager | *Ohu Haumarū - Project Management & Risk Office*

**Waea:** 07 351 8217 | **Waea Pūkoro:** 027 205 1794

**Īmera:** will.bamford@rotorualc.nz | **Ipurangi:** rotorualakescouncil.nz

**Taunga:** 1061 Haupapa St, Private Bag 3029, Rotorua Mail Centre, Rotorua 3046, New Zealand

**ROTORUA  
LAKES COUNCIL**

---

NOTICE: This communication and any attachments ("this message") may contain information which is privileged, confidential, proprietary or otherwise subject to restricted disclosure under applicable law. This message is for the sole use of the intended recipient(s). Any unauthorized use, disclosure, viewing, copying, alteration, dissemination or distribution of, or reliance on, this message is strictly prohibited. If you have received this message in error, or you are not an authorized or intended recipient, please notify the sender immediately by replying to this message, delete this message and all copies from your e-mail system and destroy any printed copies.

---

**From:** Will Bamford  
**Sent:** Tuesday, 15 September 2020 4:23 pm  
**To:** 'Shilton, Fred'  
**Cc:** 'nick@tepuia.com'; Stewart Brown; Marc Spijkerbosch; Haley Farmer; Vicki Cawte  
**Subject:** RE: Hemo sculpture - adjustments to inner helix  
**Attachments:** 20200915\_135946\_resized.jpg; 20200915\_135931\_resized.jpg

Hi Fred

Thanks for your call earlier confirming that option 2c (new concrete plinth) would be the best and most affordable option if we were to raise the inner helix.

We went to site this arvo to view a mock up a repair on the most impacted tube. We are comfortable with how this looked and it has approval from Gurit. We instructed Kilwell to move forward with this repair. A couple of photos attached – the tube with the green duct tape is the mocked up on!

Thank you very much for assisting with our decision making process.

Cheers

Will

**Will Bamford** Kaea Hinonga – Senior Project Manager | *Ohu Haumarū* - Project Management & Risk Office  
[07 351 8217](tel:073518217) | [027 205 1794](tel:0272051794) | [will.bamford@rotorualc.nz](mailto:will.bamford@rotorualc.nz) | [rotorualakescouncil.nz](http://rotorualakescouncil.nz)

---

**From:** Will Bamford  
**Sent:** Tuesday, 15 September 2020 11:37 am  
**To:** 'Shilton, Fred' <fred.shilton@wsp.com>  
**Cc:** 'nick@tepuia.com' <nick@tepuia.com>; Stewart Brown <Stewart.Brown@rotorualc.nz>; Marc Spijkerbosch <Marc.Spijkerbosch@rotorualc.nz>; Haley Farmer <Vicki.Cawte@rotorualc.nz>  
**Subject:** Hemo sculpture - adjustments to inner helix

Hi Fred

How are you?

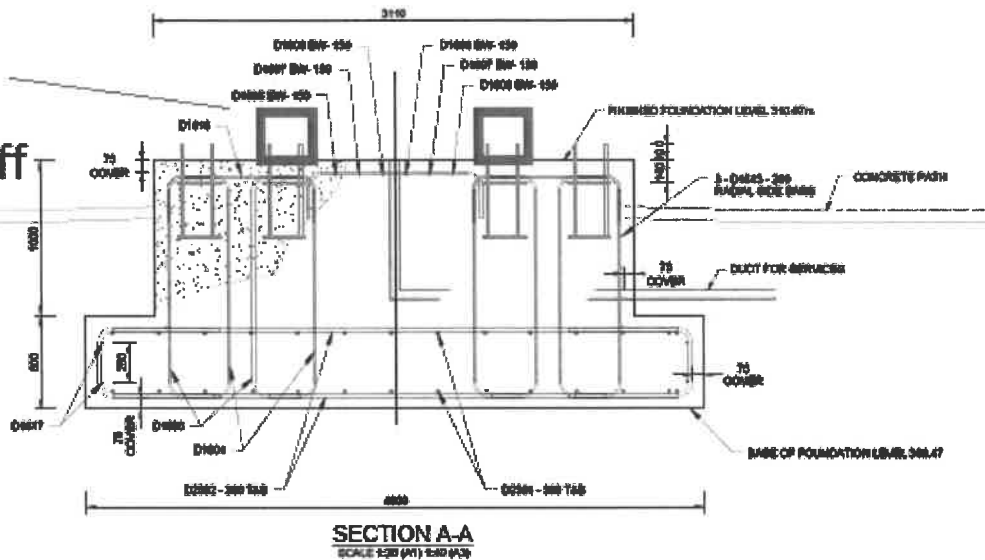
As discussed, the inner helix of Te Ahi Tupua is too wide to fit within the outer helix and sit at alignment on the inner set of bolt plinths.

To get it onto the plinth bolts, Kilwell has removed six sections of the main tube from the inner helix where they were intersecting with the main tube of the outer helix.

We currently are looking at two options to complete the install (but are open to others):

1. Mould and fit curved inner tubes which are aligned so they work around the outer tubes;
2. Build up the plinth so that the inner helix baseplate is 300mm above top of plinth, as at this height the inner helix can site at alignment without any tubes clashing with the outer helix. This could potentially be done by:
  - a. Using sections of SHS to bolt to the baseplate and the plinth;
  - b. Extending the D16 by 300mm, and then grouting a sleeve around the exposed rod;
  - c. Drilling in new rebar, boxing, and pouring a plinth extension for the inner baseplate.

Inner ring  
300mm -  
400mm off  
top of  
plinth?



- Another option is to butt the inner tubes into the outer tubes, essentially making t sections. However, the Gurit Engineer wasn't keen on this as he wants the two main tubes to be supporting themselves independently (with a note that both tubes will be strapped together where they cross).

As discussed, can you please have a think about the engineering implications of Option 2? And the best way to achieve this? I can then cost it up and we can have a robust discussion on how to move forward. It's noted that the level of carbon repair involved in both Items 1 and 2 would be similar.

Ideally, would you be able to please get back to us with an initial response?

Happy to discuss.

Cheers

Will

---

**Will Bamford** Kaea Hinonga – Senior Project Manager | **Ohu Haumarū** - Project Management & Risk Office

Waea: 07 351 8217 | Waea Pūkoro: 027 205 1794

Īmera: [will.bamford@rotorualc.nz](mailto:will.bamford@rotorualc.nz) | Ipurangi: [rotorualakescouncil.nz](http://rotorualakescouncil.nz)

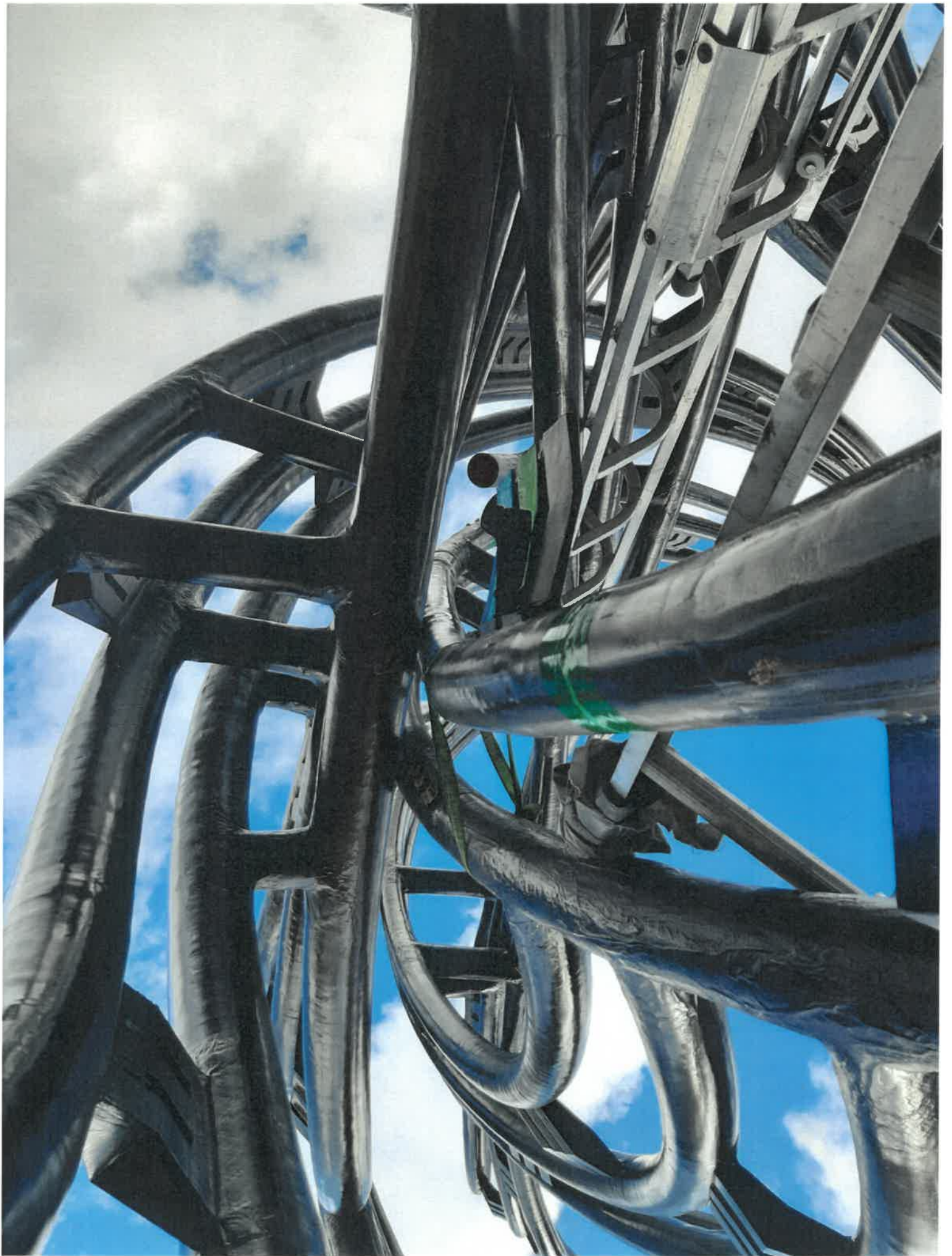
Taunga: 1061 Haupapa St, Private Bag 3029, Rotorua Mail Centre, Rotorua 3046, New Zealand

**ROTORUA**  
LAKES COUNCIL













---

**From:** Marc Spijkerbosch  
**Sent:** Tuesday, 6 October 2020 10:21 am  
**To:** 'Shilton, Fred'  
**Subject:** Grout for Hemo Sculpture base

Hi Fred, trust all's well

Just looking at the installation requirements, and lining up a builder to install the grout between the foundation ring and the top of plinth.

Wondered if you might be able to confirm the product we'll need to use?

I'd imagine we'd only get one shot at this, so want to be absolutely sure.

Cheers

Marc

---

**Marc Spijkerbosch** *Community Arts Advisor*

**P:** 07 351 8154

**E:** marc.spijkerbosch@rotorualc.nz | **W:** rotorualakescouncil.nz

**A:** 1061 Haupapa St, Private Bag 3029, Rotorua Mail Centre, Rotorua 3046, New Zealand

**ROTORUA**  
LAKES COUNCIL

