



**Infrastructure and  
Environment  
Solutions Group**  
*Kāhui Tūānuku Tūārangi*



**Year in reflection  
2021**

# State Highway Networks Improvements Programme

Current investment in progress \$80 million + \$30 million



# Eastern Corridor Stage 1

- Sala Street to Isles Road



# Eastern Corridor Stage 1

- Sala Street to Isles Road
- Tarawera Intersection





# Ngongotahā Roundabout

- Completing safety platforms to slow traffic
- Opened on 1 Nov - Western Road detour removed



**WWTP**  
**Improvements**  
to prepare for the  
full upgrade  
expected in  
2022/2025

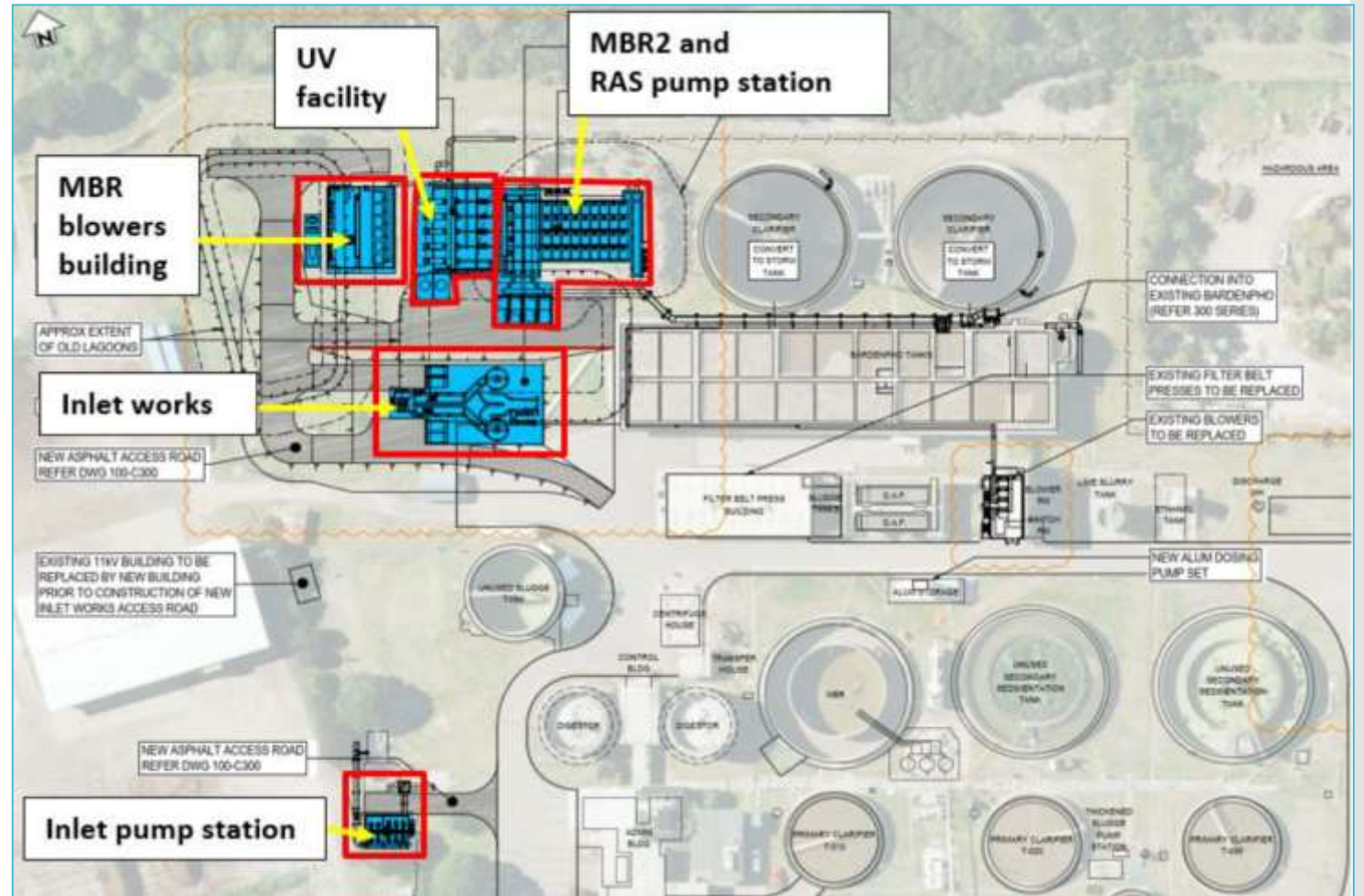


Rotorua Wastewater Treatment Plant now



# WWTP Improvements

Location of proposed new structures and buildings in WWTP upgrade





# WWTP Improvements made:

Dewatering





# WWTP Improvements made:

Blower

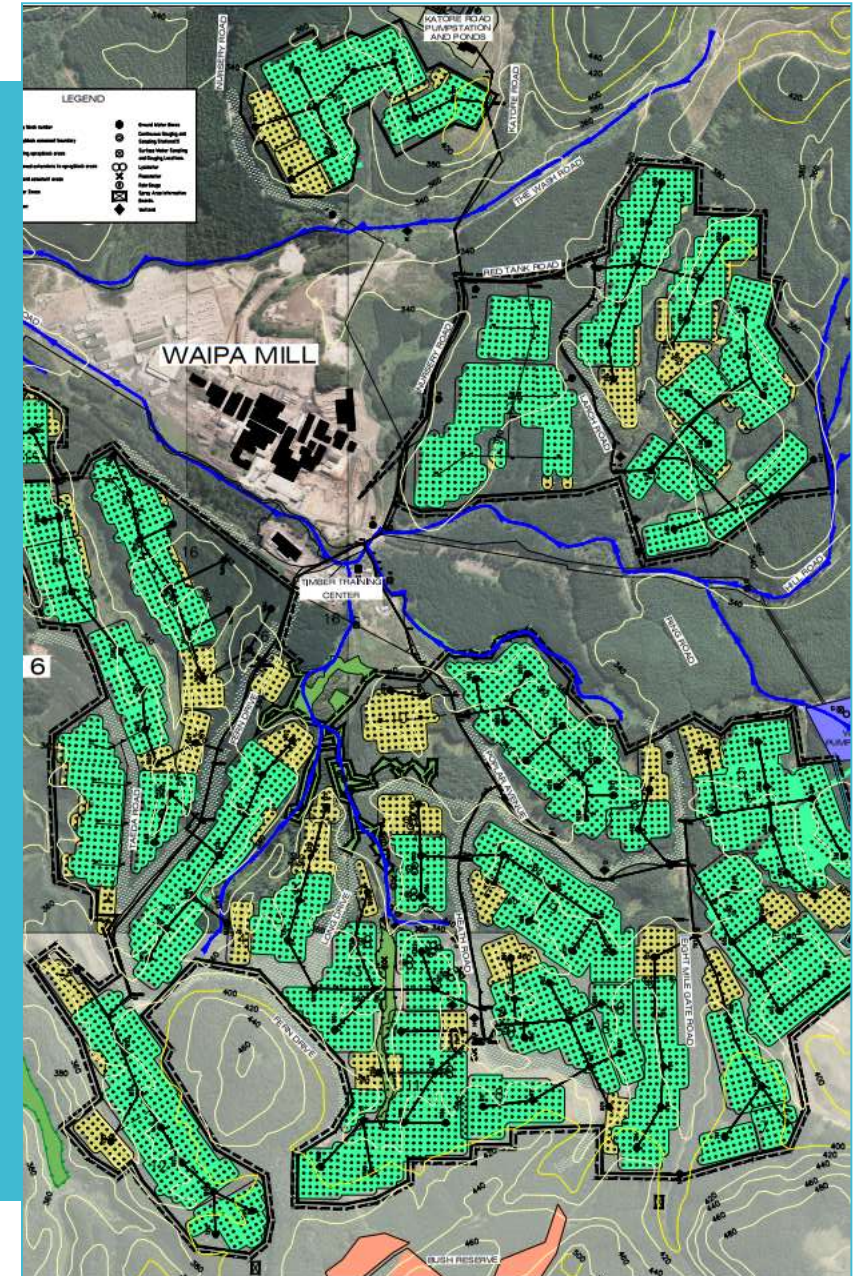


# WWTP Improvements made:

Permeate Water



Current Irrigation area:  
400ha to 40ha





Conceptual Land  
Contact in the  
SFA approach  
10% of current  
used area in forest





# Victoria Street Wastewater Trunk Main Sulphur Effects/Capacity



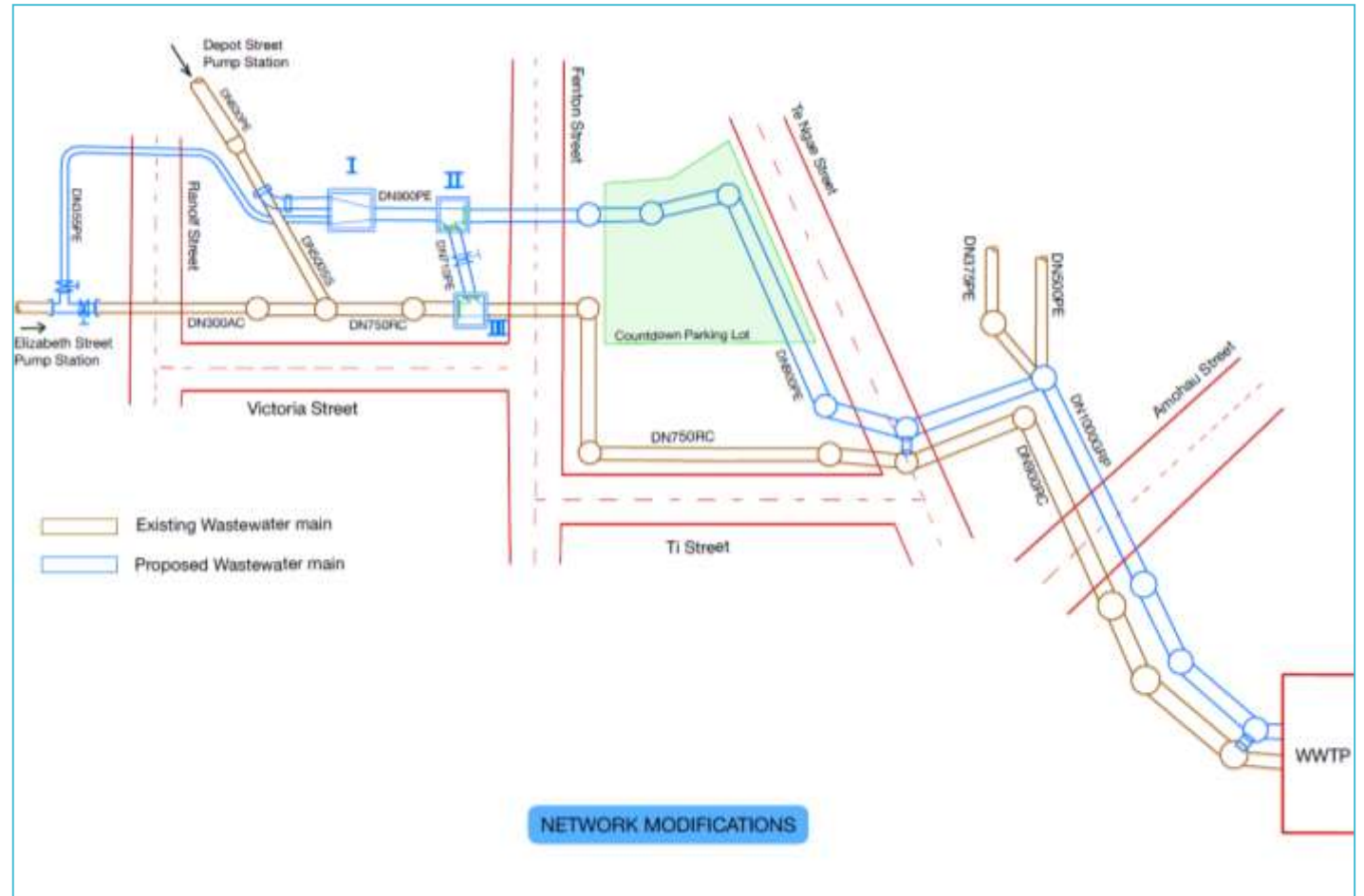
# System Demands

- All wastewater from western side of city
- Currently operating at capacity
- Future growth in catchment significant
- 2130 design horizon requires doubling of capacity





# Proposed Upgrade

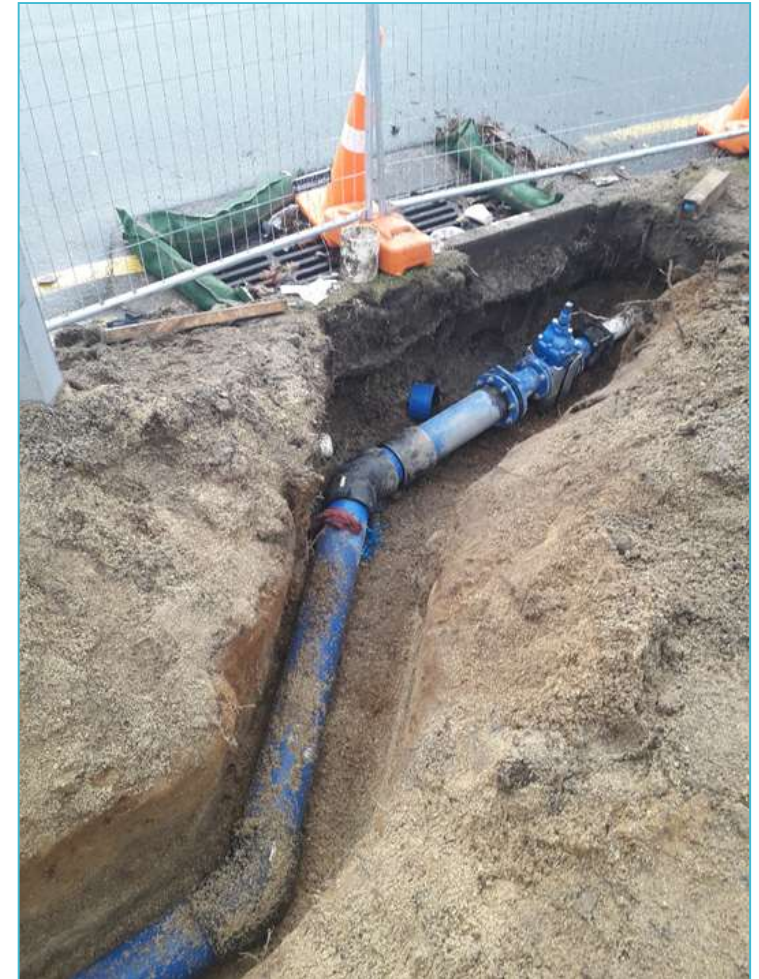




Water main renewals  
essential to maintain  
stable condition and  
reliable service

# Water mains

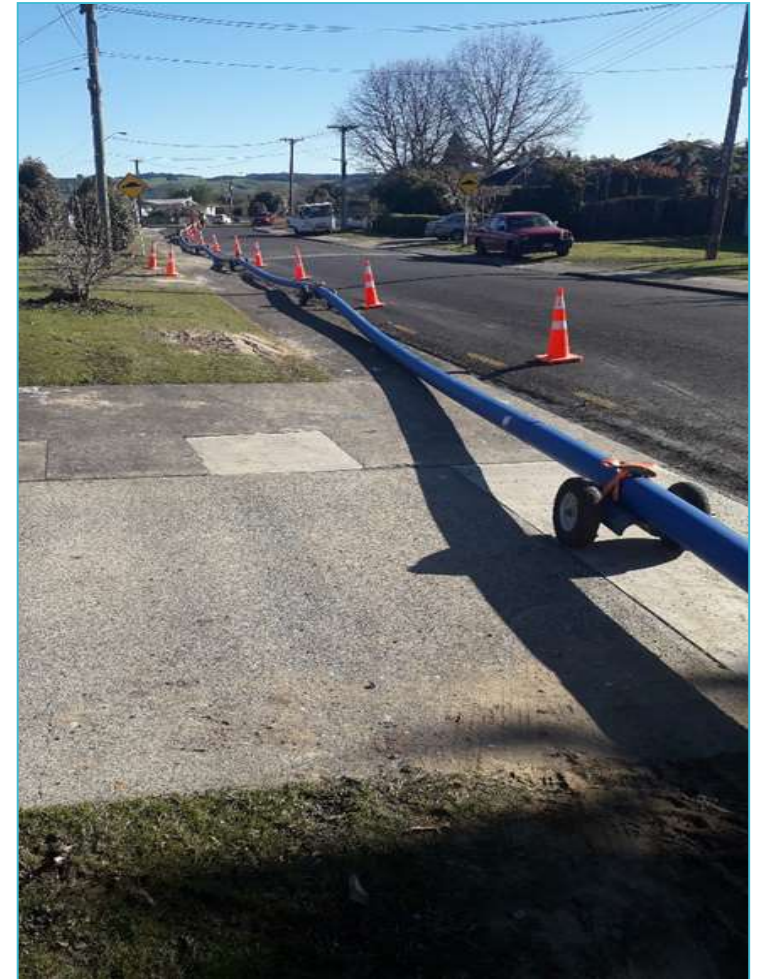
- Based on age and actual condition
- Significant amount of asbestos cement pipes outdated
- Essential for long term reliable performance of network





## Main types

- Distribution mains budgeted at around \$1.5m p.a.
- Trunk Mains based on specific condition and demand assessments
- Overall renewals \$3.0m p.a.



# Current Programme

- Umukaria Rd
- Malfroy Rd
- Island View Rd
- Miller St
- Peace St
- Hilda St
- Galbraith St
- La Trobe Pl
- Sala St



- Duplication of the Waipa water main to increase supply resilience and service reliability is planned for the 2021/22 year
- Replacement of a trunk main in Ranolf Street is programmed for the current year



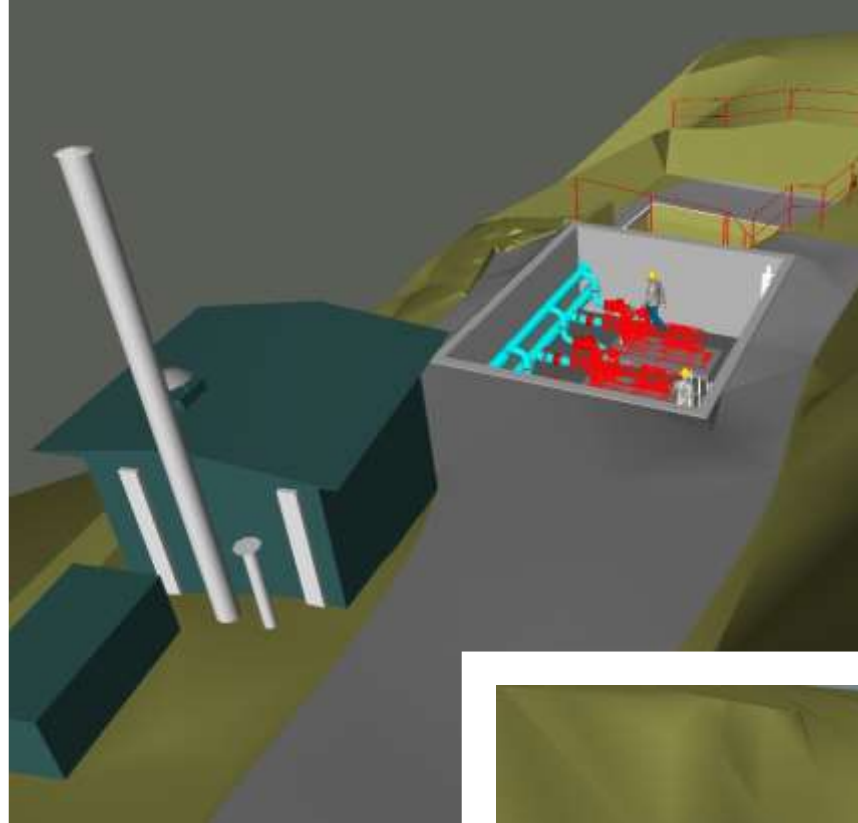




# Taniwha Springs – Iwi collaboration

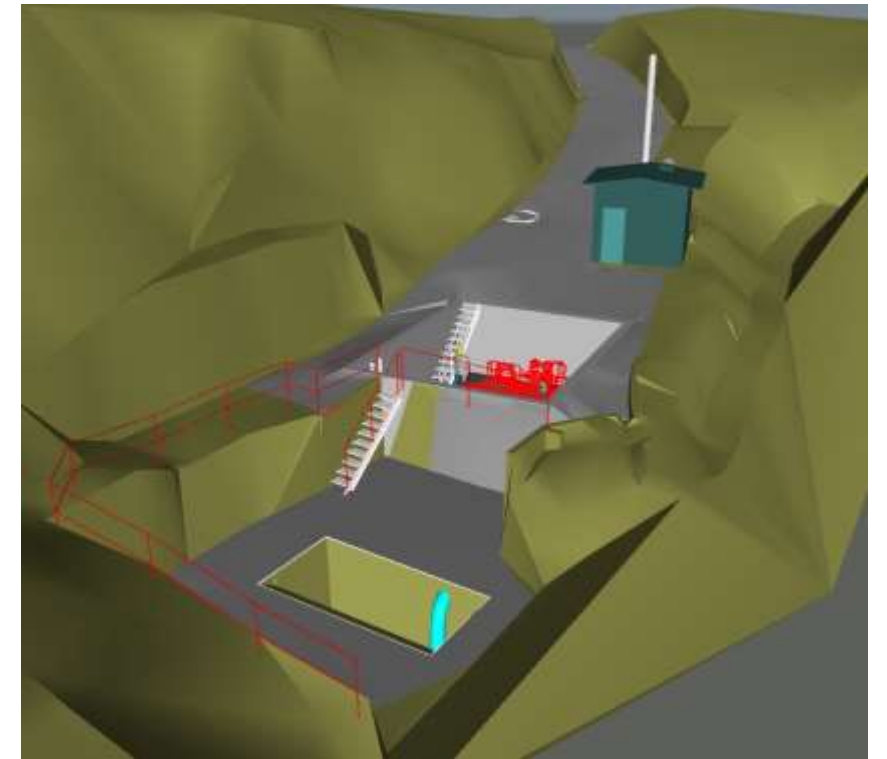


# Concept of Proposed Restoration Work



< Looking down the access road

Looking from beyond the puna >





# Linton Park Stormwater Detention Dam Western Land Development

Western Stormwater Management Master Plan





# Attenuation Improvements





# Existing Structure

- Earth Embankment
- Low Flow culvert
- Operates in about 5yr return period event
- Does not meet current Dam Safety Guidelines
- Determined to be “Dangerous Dam” and may fail in 10 to 20 year return period event
- To be rebuilt and strengthened under emergency provisions of RMA
- Part funded under Water Reform Program bringing infrastructure up to current standards and future demand



# Dam Layout

Works commenced  
November 2021





# Wharenui Road Development 1000 Houses

