



**ROTORUA  
LAKES COUNCIL**  
Te Kaunihera o ngā Roto o Rotorua

# Kaupapataka Agenda

## NOTICE OF A MEETING OF INFRASTRUCTURE AND ENVIRONMENT COMMITTEE

**Date:** Wednesday 2 October 2024

**Time:** 9:30 am

**Venue:** Council Chamber

### MEMBERSHIP

**Chair**

Cr Barker

**Members**

Cr Wang (Deputy Chair)

Mayor Tapsell

Cr Kai Fong

Cr Brown

Cr O'Brien

Cr Paterson

Cr Lee

Cr Maxwell

Cr Waru

Cr Kereopa

**Quorum**

6

**Andrew Moraes  
Chief Executive**

**NGĀ TUKUNGA HAEPAPA A TE KAUNIHERA  
INFRASTRUCTURE AND ENVIRONMENT DELEGATIONS**

<b>Type of Committee</b>	Whole of Council Committee
<b>Subordinate to</b>	N/A
<b>Subordinate Committees</b>	N/A
<b>Legislative Basis</b>	Schedule 7, clause 30 (1) (a), Local Government Act 2002.
<b>Purpose</b>	To develop, implement, monitor and review strategies, policies, plans and functions associated with Infrastructure and environment activities.
<b>Membership</b>	Mayor Deputy Mayor All councillors
<b>Quorum</b>	6
<b>Meeting frequency</b>	Monthly
<b>Delegations</b>	<ul style="list-style-type: none"> <li>• Oversee the management of council’s infrastructure assets, utility services and public facilities including: <ul style="list-style-type: none"> <li>• Transportation</li> <li>• Three waters</li> <li>• Land drainage</li> <li>• Laboratory services</li> <li>• Waste collection, landfill, recycling</li> <li>• Sports, Reserves and Recreation</li> <li>• Cemetery</li> <li>• Civil Defence Emergency Management</li> </ul> </li> <li>• Accountable for the development and implementation of the Infrastructure Strategy, Asset Management Plan and inputs on infrastructure related projects associated with Development Contributions Policy</li> <li>• Oversight of progress of design and build projects such as, but not limited to: <ul style="list-style-type: none"> <li>○ Waste water treatment plant</li> <li>○ Sewerage schemes (Rotoiti/Rotoma/Rotoehu, Tarawera)</li> <li>○ Development of major facilities for example Museum, Aquatic Centre, Libraries</li> <li>○ Water storage and drainage for growth</li> <li>○ Infrastructure provision for growth</li> <li>○ Major transport projects, cycleways</li> <li>○ Reticulation of water supplies</li> </ul> </li> <li>• Undertake master planning of strategic facilities and spaces</li> <li>• Encourage engagement with organisations within the sector to consider environmental matters including: <ul style="list-style-type: none"> <li>○ Climate change response, both mitigation and adaptation</li> <li>○ Biodiversity</li> <li>○ Waste Minimisation</li> </ul> </li> </ul>

	<ul style="list-style-type: none"> <li>○ Environmentally sustainable practices</li> <li>○ Environmental aspects of energy, transport and water</li> <li>○ Monitoring and reporting against action within the Climate Action Plan</li> <li>○ Monitor Council’s contribution to the Te Arawa Vision (specifically in relation to Infrastructure and Environment outcomes)</li> <li>○ The provision and maintenance of facilities and space for the general use of the public for recreation of all kinds including sporting activities, passive enjoyment, open spaces, play areas, toilets and changing sheds, flower beds, trees and shrubs, and display areas</li> <li>○ The production of Management Plans and the general management of reserves in compliance with the Reserves Act 1977 and the general administration of the Reserves Act 1977 with the exception of the Hearings of Objections to the Classification of Reserves and Management Plans</li> <li>○ The leasing of recreational land for commercial recreational purposes</li> <li>○ The beautification of public gardens and parks</li> <li>○ Street trees</li> <li>● Council controlled organisations (CCO’s) - advising on the content of the annual Statement of Expectations, agreement on Statement of Intent, monitoring against the Statement of Intent the financial and non-financial performance of CCO’s</li> <li>● Make appointments and authority to remove appointments to Council-Controlled Organisations (CCO’s).</li> </ul>
<p><b>Relevant Statutes</b></p>	<p>All the duties and responsibilities listed above must be carried out in accordance with the relevant legislation.</p>

## Order of Business

<b>1</b>	<b>Karakia Whakapuaki – Opening Karakia</b> .....	<b>5</b>
<b>2</b>	<b>Ngā Whakapāha – Apologies</b> .....	<b>5</b>
<b>3</b>	<b>Whakapuakitanga Whaipānga – Declarations of Interest</b> .....	<b>5</b>
<b>4</b>	<b>Ngā Take Whawhati Tata Kāore I Te Rāangi Take - Urgent Items not on the Agenda</b> .....	<b>5</b>
<b>5</b>	<b>Te Whakaū I Ngā Meneti - Confirmation of Minutes</b> .....	<b>6</b>
5.1	Minutes of the Infrastructure and Environment Committee Meeting held on 4 September 2024 .....	6
<b>6</b>	<b>Ngā Tāpaetanga - Presentations</b> .....	<b>20</b>
6.1	New Zealand Transport Agency Presentation.....	20
<b>7</b>	<b>Pūrongo Kaimahi – Staff Reports</b> .....	<b>21</b>
7.1	Civil Defence Emergency Management (CDEM): Recommendation to appoint additional Alternate Local Controller .....	21
7.2	Parawai Rising Main Long Term Plan Funding Adjustment .....	24
7.3	Major Capital Projects Update - Stormwater Management IAF Programme .....	30
7.4	Major Capital Projects Update - Museum Project .....	39
7.5	Infrastructure and Environment Progress Report.....	45
<b>8</b>	<b>He Whakataunga Kia Hoki Atu Te Aronga O Te Hui Hai Hui Tūmatawhānui – Resolution to Move into Public Excluded (to Consider and Adopt Confidential Items)</b> .....	<b>65</b>
8.1	Confidential Minutes of the Infrastructure and Environment Committee Meeting held on 4 September 2024 .....	65
<b>9</b>	<b>Te Karakia Whakamutunga – Closing Karakia</b> .....	<b>66</b>

## 1 KARAKIA WHAKAPUAKI – OPENING KARAKIA

### Tūtawa Mai

Tūtawa mai i runga

Tūtawa mai i raro

Tūtawa mai i roto

Tūtawa mai i waho

Kia tau ai te mauri tū

Te mauri ora, ki te katoa

Hāumi e. Hui e. Tāiki e!

### Tūtawa Mai

I summon from above

I summon from below

I summon from within

I summon the surrounding environment

The universal vitality and energy to infuse and enrich all present

Enriched, unified and blessed

## 2 NGĀ WHAKAPĀHA – APOLOGIES

The Chair invites notice from members of:

1. Leave of absence for future meetings of the Infrastructure and Environment Committee; or
2. Apologies, including apologies for lateness and early departure from the meeting, where leave of absence has not previously been granted.

## 3 WHAKAPUAKITANGA WHAIPĀNGA – DECLARATIONS OF INTEREST

Members are reminded of the need to be vigilant to stand aside from decision making when a conflict arises between their role as a member and any private or other external interest they might have.

## 4 NGĀ TAKE WHAWHATI TATA KĀORE I TE RĀRANGI TAKE - URGENT ITEMS NOT ON THE AGENDA

### Items of business not on the agenda which cannot be delayed

The Chair will give notice of items not on the agenda as follows:

Matters Requiring Urgent Attention as Determined by Resolution of Rotorua Lakes Council

The Chair shall state to the meeting.

1. The reason why the item is not on the agenda; and
2. The reason why discussion of the item cannot be delayed until a subsequent meeting.

The item may be allowed onto the agenda by resolution of the Rotorua Lakes Council.

s.46A (7), LGOIMA

### Discussion of minor matters not on the agenda.

Minor Matters relating to the General Business of the Rotorua Lakes Council.

The Chair shall state to the meeting that the item will be discussed, but no resolution, decision, or recommendation may be made in respect of the item except to refer it to a subsequent meeting of the Rotorua Lakes Council for further discussion

s.46A (7), LGOIMA

**5 TE WHAKAŪ I NGĀ MENETI - CONFIRMATION OF MINUTES**

**5.1 MINUTES OF THE INFRASTRUCTURE AND ENVIRONMENT COMMITTEE MEETING HELD ON 4 SEPTEMBER 2024**

**RECOMMENDATION**

- 1. That the minutes of the Infrastructure and Environment Committee Meeting held 4 September 2024 be confirmed as a true and correct record.**

## Minutes (Draft)

Infrastructure and Environment Committee meeting  
held Wednesday 4 September 2024 at 9:30 am  
Council Chamber, Rotorua Lakes Council

- MEMBERS PRESENT: Cr Barker (Chair)  
Cr Wang (Deputy Chair), Mayor Tapsell, Cr Kai Fong, Cr O'Brien,  
Cr Brown, Cr Paterson, Cr Kereopa, Cr Lee, Cr Waru
- APOLOGIES: Cr Maxwell.
- STAFF PRESENT: A Moraes, Chief Executive;  
J-P Gaston, Group Manager, Destination Development;  
S Michael, Group Manager, Infrastructure and Assets;  
T Collé, Chief Financial Officer;  
P Warbrick, Manahautū Te Arawa Hourua;  
G Kieck, Manager - Governance, Strategy & Compliance;  
N Michael, Senior Communications Advisor, Mayor's Office;  
S Main, Communications Advisor, Marketing and Communications;  
V Cawte, Senior Communications Advisor Marketing and Communications;  
G Konara, Governance and Democracy Advisor;

The meeting opened at 9.30am.

The Chair welcomed elected members, media, staff and members of the public.

### 1 KARAKIA WHAKAPUAKI – OPENING KARAKIA

Cr O'Brien opened the meeting with a Karakia.

### 2 NGĀ WHAKAPĀHA – APOLOGIES

#### RESOLVED IE 24/09-027

Moved: Cr Kai Fong

Seconded: Cr Waru

1. That the apologies from Cr Trevor Maxwell be accepted.

**CARRIED**

### 3 WHAKAPUAKITANGA WHAIPĀNGA – DECLARATIONS OF INTEREST

Nil.

**4 NGĀ TAKE WHAWHATI TATA KĀORE I TE RĀRANGI TAKE – URGENT ITEMS NOT ON THE AGENDA**

Nil.

**5 TE WHAKAŪ I NGĀ MENETI - CONFIRMATION OF MINUTES**

**5.1 MINUTES OF THE INFRASTRUCTURE AND ENVIRONMENT COMMITTEE MEETING HELD ON 7 AUGUST 2024**

**RESOLVED IE 24/09-028**

Moved: Cr Kai Fong

Seconded: Cr Wang

- 1. That the minutes of the Infrastructure and Environment Committee Meeting held 7 August 2024 be confirmed as a true and correct record.**

**CARRIED**

**6 NGĀ TĀPAETANGA - PRESENTATIONS**

Nil.

**7 PŪRONGO KAIMAHI – STAFF REPORTS**

**7.1 LOCAL WATER DONE WELL**

**RESOLVED IE 24/09-029**

Moved: Cr Brown

Seconded: Cr O'Brien

**HE TŪTOHUNGA**

**RECOMMENDATION**

- 1. That the report “Local Water Done Well” be received.**

**CARRIED**

Stavros Michael overviewed the report and spoke to a presentation titled “Local Water Done Well” (Attachment 1).



**RESOLVED IE 24/09-030**

Moved: Cr O'Brien

Seconded: Cr Waru

- 2. That the Committee notes that Rotorua Lakes Council are proceeding on the basis that the Draft Water Services Delivery Plan be prepared based on retaining in-house delivery as its preferred service delivery model.**

In Favour: Cr Barker, Cr Wang, Mayor Tapsell, Cr Kai Fong, Cr O'Brien, Cr Brown, Cr Paterson, Cr Lee and Cr Waru

Against: Cr Kereopa

**CARRIED 9/1**

The meeting adjourned at 10.52am and resumed at 11.08am.

**7.2 INFRASTRUCTURE AND ENVIRONMENT PROGRESS REPORT****RESOLVED IE 24/09-031**

Moved: Cr Kai Fong

Seconded: Cr O'Brien

- 1. That the report 'Infrastructure and Environment Progress Report' be received.**

**CARRIED**

Stavros Michael overviewed the report.

**8 HE WHAKATAUNGA KIA HOKI ATU TE ARONGA O TE HUI HAI HUI TŪMATAWHĀNUI – RESOLUTION TO MOVE INTO PUBLIC EXCLUDED (TO CONSIDER AND ADOPT CONFIDENTIAL ITEMS)**

<p><b>RESOLVED IE 24/09-032</b></p> <p>Moved: Cr Kai Fong Seconded: Cr Waru</p> <p>1. That Infrastructure and Environment Committee resolves to exclude the public on the grounds contained in Section 48(1) of the Local Government Official Information and Meetings Act:</p>		
General subject of each matter to be considered	Reason for passing this resolution in relation to each matter	Ground(s) under section 48 for the passing of this resolution
8.1 - Confidential Minutes of the Infrastructure and Environment Committee Meeting held on 7 August 2024	Please refer to the relevant clause/s in the open meeting minutes.	Good reason for withholding exists under Section 48(1)(a).
8.2 - Approval of Contract Value & Term Extension 19/061 Streetlight Maintenance and Renewals 2020 - 2030	s7(2)(h) - the withholding of the information is necessary to enable Council to carry out, without prejudice or disadvantage, commercial activities	s48(1)(a)(i) - the public conduct of the relevant part of the proceedings of the meeting would be likely to result in the disclosure of information for which good reason for withholding would exist under section 6 or section 7
<b>CARRIED</b>		

The meeting adjourned at 11.56am and resumed in public excluded session at 1.58pm.

**OPEN SESSION**

**9 TE KARAKIA WHAKAMUTUNGA – CLOSING KARAKIA**

Cr O’Brien closed the meeting with a karakia.

---

The Meeting closed at 2.33pm.

---

To be confirmed at the Infrastructure and Environment Committee meeting on 2 October 2024.

**Note:-Rotorua Lakes Council is the operating name of Rotorua District Council.**

## Attachment 1 – Presentation – Local Water Done well



## Purpose of this Discussion

1. Highlight key points of the proposed reforms.
2. Update Elected Members on the status of Rotorua Lakes Council.
3. Seek elected member endorsement of Rotorua Lakes Council proposal to formulate its own Water Services Delivery Plan.

**THREE WATERS REFORM**

**ROTORUA**  
LAKES COUNCIL

## Local Water Done Well Legislation

**Water Services Acts Repeal Act 2024** repealed the proposed 10 water services entities and confirmed that Council's will continue to own and be responsible for water services.

**Local Government (Water Services Preliminary Arrangements) Bill** will require Council to submit a Water Services Delivery Plan within 12 months of the Bill's enactment and will provide for streamlined consultation and decision-making processes for setting up new water organisations

**Local Government Water Services (Transitional Provisions) Bill** will make enable:

- An expanded range of water services delivery models
- New financing options including the ability to leverage up to 500% of operating revenues (around twice that of existing councils)
- New economic regulation regime that will ensure revenue collected by water service providers is being spent on the level of water infrastructure needed.

**THREE WATERS REFORM**

**ROTORUA**  
LAKES COUNCIL

## Service Delivery Plans

- Financial and asset information
- Investment required
- Service delivery arrangements.

**THREE WATERS REFORM**

**ROTORUA**  
LAKES COUNCIL

## Economic Regulation

- Consumers pay efficient, cost-reflective prices for water services
- That those services are delivered to an acceptable quality, and
- That water services providers are investing sufficiently in their infrastructure.

**THREE WATERS REFORM**

**ROTORUA**  
LAKES COUNCIL

## Local Government Water Services (Transitional Provisions) Bill

Policy decisions announced August and the Bill is expected to be introduced December and passed mid-2025.

Expanded range of water services delivery models

- Financially independent from council from a credit rating perspective.
- Must meet regulatory standards, financial sustainability requirements such as ringfencing of water services, and restrictions against privatisation

New financing options for councils.

- LGFA will provide financing to water council-controlled organisations that are financially supported by their parent council/s
- Leverage for water organisations up to 500% of operating revenues subject to meeting prudent credit criteria.

New economic regulation regime for water service providers

- Ensure revenue collected by water service providers is being spent on the level of water infrastructure needed.

**THREE WATERS REFORM**

**ROTORUA**  
LAKES COUNCIL

## Service Delivery Models

Internal business unit or division	<ul style="list-style-type: none"> <li>• Status quo for many councils</li> <li>• Minimum requirements for water service providers will apply</li> <li>• New financial sustainability, ringfencing rules, and economic regulation will apply</li> </ul>
Single council-owned water organisation	<ul style="list-style-type: none"> <li>• New company established, 100% owned by the council</li> <li>• Financial sustainability rules will apply, but retains a financial link to the council</li> </ul>
Multi-council owned water organisation	<ul style="list-style-type: none"> <li>• New company established with multi-council ownership</li> <li>• Appointment of a Board through shareholder council (or similar body) is advisable but not a statutory requirement</li> <li>• Option to access LGFA finance with the provision of parent support</li> </ul>
Mixed council/consumer trust owned	<ul style="list-style-type: none"> <li>• Consumer trust established to own majority of shares</li> <li>• Mixed ownership, with one or more councils owning minority of shares</li> <li>• Structure enables financially independent organisation to be established while retaining minority council ownership</li> </ul>
Consumer Trust owned	<ul style="list-style-type: none"> <li>• Council transfers assets to consumer trust owned organisation</li> <li>• Consumers elect trustees to represent their interests in the organisation</li> <li>• Most financially independent of the available models</li> </ul>

**THREE WATERS REFORM**

**ROTORUA LAKES COUNCIL**

## Timeline

	Next 6 months (Jul-Dec 2024)	Jan-Jun 2025	Jul-Dec 2025	Jan-Jun 2026	Jul-Sep 2026
Water service delivery arrangements	Councils can establish new water organisations allowed under existing legislation		Councils can establish new water models through legislation		
			Minimum requirements for local government water services providers in effect		
Water Services Delivery Plans (WSDPs)	Councils develop WSDPs		Submit WSDPs to DIA for review and acceptance (Aug-Nov 2025)	Councils publish accepted WSDPs (Nov 2025)	
				DIA shares accepted WSDPs with Commerce Commission and Taumatua Arowai	
				DIA monitor WSDPs Implementation Plan (Nov 2025 until complete)	

**THREE WATERS REFORM**

**ROTORUA LAKES COUNCIL**

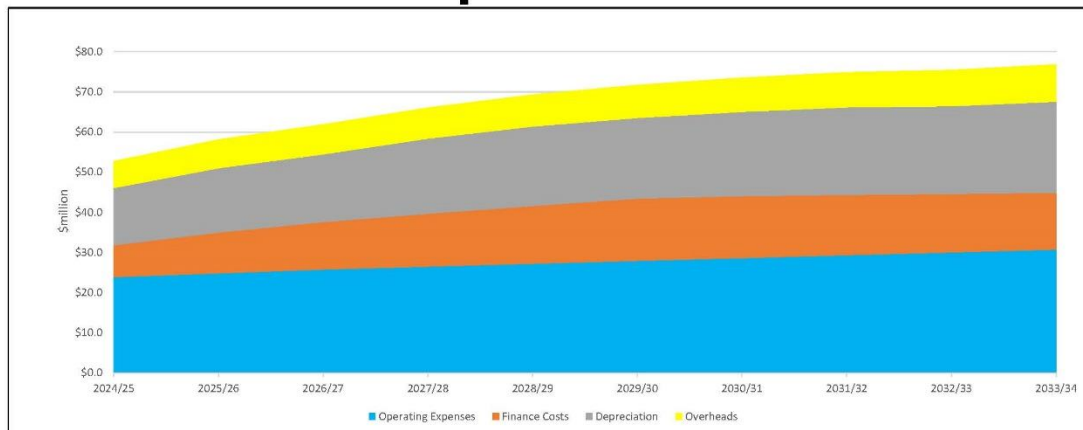
## What are RLC Problems/Issues?

- Meeting regulatory and compliance standards (ok so far)
- Attracting/retaining and developing skills and competence (ok so far but a risk)
- Reliable and cost effective services provision/contracts (ok but we can improve)
- Appropriate and reliable funding sources to satisfy economic regulator (all phases/fees, rates, borrowings etc)

THREE WATERS REFORM

ROTORUA LAKES COUNCIL

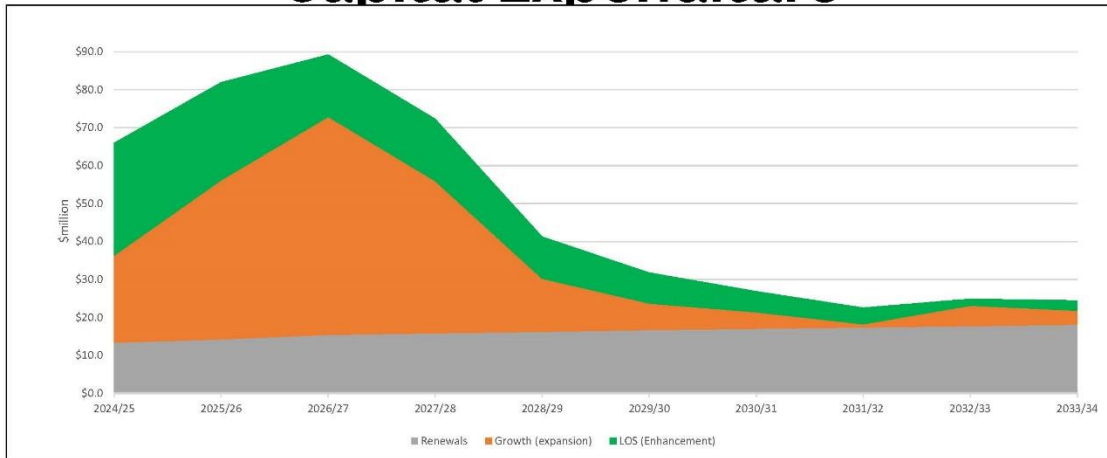
## Expenditure



THREE WATERS REFORM

ROTORUA LAKES COUNCIL

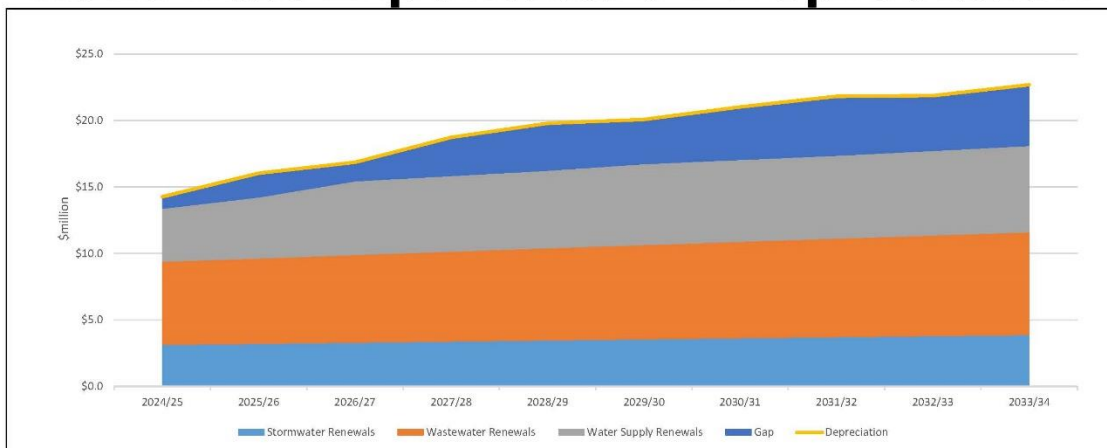
# Capital Expenditure



**THREE WATERS REFORM**

**ROTORUA LAKES COUNCIL**

# Renewals Expenditure v Depreciation



**THREE WATERS REFORM**

**ROTORUA LAKES COUNCIL**



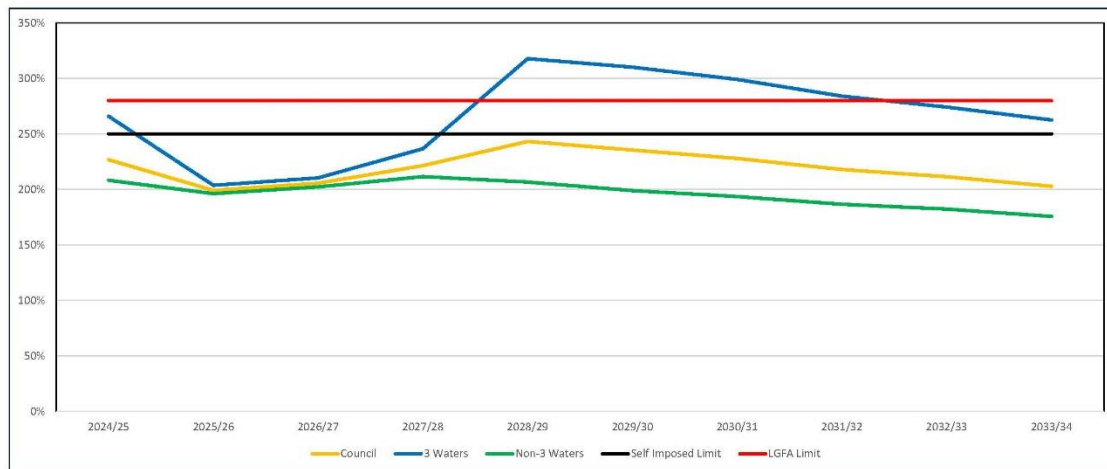
# Debt

Long Term Plan 2024-2034	Year 1			Year 10		
	Total \$M	3W only \$M	Non 3W \$M	Total \$M	3W only \$M	Non 3W \$M
Debt	\$479	\$180	\$299	\$560	\$227	\$333
Income	\$211	\$53	\$158	\$276	\$82	\$194
Expenses	\$190	\$39	\$152	\$268	\$54	\$214
Asset Value	\$2,051	\$953	\$1,098	\$2,803	\$1,190	\$1,614
Debt to income ratio	227%	340%	189%	203%	278%	171%
Debt to asset ratio	23%	19%	27%	20%	19%	21%

THREE WATERS REFORM

ROTORUA  
LAKES COUNCIL

# Debt



THREE WATERS REFORM

ROTORUA  
LAKES COUNCIL

## Service Delivery Models

Option	Pros	Cons
Internal business unit or division	Retain control Better links to other Council planning i.e. district development	May not achieve benefits of scale
Single council-owned water organisation	Increased debt leverage	
Multi-council owned water organisation	Scale advantage Procurement Staff recruitment and retention Increased debt leverage	Loss of control Further removed from mana whenua and community Disconnection from other council planning
Mixed council/consumer trust owned		
Consumer Trust owned	Most financially independent	



## Higher Debt Opportunities

- LGFA will support leverage for water organisations up to 500% of operating revenues (around twice that of existing councils), subject to water organisations meeting prudent credit criteria
- Using increased borrowings to solve infrastructure deficit (current and future) is not risk free.
- The “off-balance sheet” notion without guarantees is not feasible (so Councils will continue to incur the liability and credit rating impacts)

## The requirement to achieve “Financially Sustainable Models”

- The core objective here is to avoid the need for a Council or the Crown to be called to inject additional funds or bail out a water services provider.
- The most viable path towards “financially sustainable models” would appear to be realistic revenue settings/projections (through the water rates/charges etc) that reduce the need to borrow and suppress the debt/revenue ratio.
- Provision in these rates and charges can be made to allow for debt servicing and debt levels management.

**THREE WATERS REFORM**

**ROTORUA**  
LAKES COUNCIL

## What is required of Elected Members

- Note:
  - the key points of the proposed reforms.
  - the timeline for the reform.
  - the status of Rotorua Lakes Council.
- Endorsement of Rotorua Lakes Council proposal to formulate its own Water Services Delivery Plan.

**THREE WATERS REFORM**

**ROTORUA**  
LAKES COUNCIL

**6 NGĀ TĀPAETANGA - PRESENTATIONS**

**6.1 NEW ZEALAND TRANSPORT AGENCY PRESENTATION**

## 7 PŪRONGO KAIMAHI – STAFF REPORTS

### 7.1 CIVIL DEFENCE EMERGENCY MANAGEMENT (CDEM): RECOMMENDATION TO APPOINT ADDITIONAL ALTERNATE LOCAL CONTROLLER

**Prepared by:** Bruce Horne, Civil Defence and Emergencies Readiness Co-ordinator

**Approved by:** Stavros Michael, Group Manager, Infrastructure and Assets

#### 1. TE PŪTAKE PURPOSE

This report seeks the endorsement of the nomination of Paul Warbrick to the position of Alternate Local Controller Civil Defence and Emergency Management, in order to strengthen the capacity of the Council Emergency Response Incident Management Team.

#### HE TŪTOHUNGA RECOMMENDATION

1. That the report 'Civil Defence Emergency Management (CDEM): Recommendation to appoint additional Alternate Local Controller' be received.

2. That the Committee endorses the nomination of Paul Warbrick, Manahautū Te Arawa Partnerships, to the appointment of Alternate Local Controller

#### 2. TE TĀHUHU BACKGROUND

Council is responsible under the Civil Defence Emergency Management Act 2002 to participate in civil defence emergency management groups and to carry out any duties or functions conferred on members of this group. Rotorua Lakes Council is part of the Bay of Plenty CDEM Group. Each CDEM Group partner is expected to coordinate and integrate their emergency response in support of other partners and neighbouring districts.

Key operational roles provided by the Group are in accordance with the National CDEM Plan 2015. A Group Controller is appointed and responsible for the Group Emergency Coordination Centre (GECC) and is supported by a minimum of two alternate controllers.

Under the BOP CDEM Group policy for appointment and development of Controllers it is necessary for Chief Executive Officer and CDEM Chief Executive Group to receive nominations for recruits to the Local Controller position and to seek Council endorsement for their

appointment. Council may appoint one or more persons to the Local Controller position and can direct that person to perform the functions of or tasks assigned by the Group Controller.

Local Controllers have a responsibility to fulfil the role under the CDEM Act 2002, to lead a coordinated response to a major emergency or disaster.

Personnel appointed to the role are responsible for active management of their own personal development and are required to undertake comprehensive training program funded by BOP CDEM Group.

A Local Controller leads the Emergency Operation Centre during or immediately after an emergency event, coordinating the response amongst multiples parties. Those parties often include the Police, FENZ and St. Johns, and a number of welfare agencies. Critical skills for a Local Controller include the ability to effectively lead and manage an emergency response, make sound decisions under pressure, build and maintain relationships with both the EOC team and community partners, and fulfil the statutory responsibilities of the role. A Local Controller also needs to be able to maintain critical relationships at a senior level with the Group Controller and with the other agencies.

Paul Warbrick is part of the Executive at Rotorua Lakes Council and prior to taking up his current appointment was one of the alternate local Controllers for the Whakatane District Council. He served with the Royal New Zealand Navy for 17 years. He has completed the core training for the New Zealand Coordinated Incident Management System (CIMS) which is the national inter-agency emergency management framework. He also has experience in leading both the CIMS Planning and Operations functions in an operational environment. Paul is from the Eastern Bay and affiliates to Ngāti Rangitahi, Ngati Awa and Tuwharetoa ki Kawerau.

### **3. TE MATAPAKI ME NGĀ KŌWHIRINGA DISCUSSION AND OPTIONS**

To assist Councils staffing capability in any prolonged event and to provide assistance to National Controller (National Crisis Management Centre), Group Controller or neighbouring districts; it is considered beneficial for Council to appoint additional staffing to the positions of Alternate Local Controller.

Government reviews of CDEM response to emergencies that occurred in 2023 have affirmed the importance of local authorities taking steps to increasing both the capacity and capability of their CDEM teams

Council endorsement of nominations is required prior to agreement by Chief Executive and acceptance of nomination by Group Controller in order for these staff to be invited to attend the Controllers National Training Program.

Councils after hours emergency response within an EOC is largely dependent on the goodwill of staff who in addition to their BAU role agree to take on additional training and volunteer to be on call for any civil defence emergency response.

**4. TE TINO AROMATAWAI  
ASSESSMENT OF SIGNIFICANCE**

The decisions or matters of this report are not considered significant in accordance with the Council's Significance and Engagement Policy.

**5. NGĀ KŌRERA O TE HAPORI ME TE WHAKATAIRANGA  
COMMUNITY INPUT/ENGAGEMENT AND PUBLICITY**

Consultation on this matter is not being undertaken. No implications to Maori/ Te Arawa/ tangata whenua have been identified.

**6. HE WHAIWHAKAARO  
CONSIDERATIONS**

**6.1. Mahere Pūtea  
Financial/Budget Considerations**

No budget consideration has been undertaken.

**6.2. Kaupapa Here Me Ngā Hiraunga Whakariterite  
Policy and Planning Implications**

The endorsement or recruitment to the position of Local Controller CDEM is consistent with Council responsibilities under the CDEM Act 2002.

**6.3. Tūraru  
Risks**

Consideration to the potential risk of insufficient staffing capability in the early stages of an emergency response or during a prolonged period of disaster response.

**6.4. Te Whaimana  
Authority**

In accordance with the BOPCDEM Group recruitment and development of Controllers the Council, the Chief Executive and the CDEM Chief Executive Group (CEG) has the authority required to endorse this recommended course of action.

**7.2 PARAWAI RISING MAIN LONG TERM PLAN FUNDING ADJUSTMENT**

**Prepared by:** Eric Cawte, Manager, Infrastructure Networks Performance  
**Approved by:** Stavros Michael, Group Manager, Infrastructure and Assets  
**Attachments:** 1. Parawai Wastewater Rising Main Route

**1. TE PŪTAKE  
PURPOSE**

The purpose of this report is to request a reallocation of current budgets in the LTP for the replacement of the Parawai wastewater rising main to earlier year(s) to enable the mitigation of critical asset risks, and the progressing of housing developments.

**HE TŪTOHUNGA  
RECOMMENDATION**

1. That the report 'Parawai Rising Main Long Term Plan Funding Adjustment' be received.
2. That the Committee notes the identified critical asset failure risk and the consequences of such failure on service continuity as well on the Council's ability to enable housing development in the catchment.
3. That the the Committee approves the reallocation of the annual budgets in the LTP for the Parawai Rising main, specifically to bring forward \$2,500,000 from 2026/27 to 2024/25 and bring forward \$2,500,000 from 2027/28 to 2025/26

**2. TE TĀHUHU  
BACKGROUND**

The Parawai Rising Main is a 375mm internal diameter, 3.8 km long wastewater pressure pipeline that conveys sewage from the Parawai Rd pump station, to a sewer manhole in the gravity wastewater network at Russell Road in the city. The alignment generally follows Parawai Rd., the Ngongotaha cycleway and the railway reserve. Attached is a plan showing its location. The pipe material is asbestos cement and it was installed in 1980.

The Parawai Rd. pump station collects and pumps all the wastewater from the Hamurana and Ngongotaha areas, with an average daily flow volume of 1250 cubic metres. On an average day, the pump station must operate every 20 minutes to ensure that flow is maintained. These flows increase and time shortens by 3-4 times in wet weather. This is the third-largest pressure sewer main in the wastewater network, behind the Depot St rising main which was replaced in 2013 and the Hona Rd rising main which was duplicated in 2019, but it is by far the longest.



In 2010, a condition assessment of this critical pipeline was carried out by Opus Consultants. The results of this indicated that the pipeline had an estimated remaining life of around 15 years.

During the finalisation in 2019 of the wastewater management, renewal and operation contract currently held by TRILITY, this pipeline was identified as a specific significant asset that may require replacement during the 10 year contract term, but also had a reasonable chance of lasting a further 5 years and not having a renewal requirement until after the contract. Options for either including this renewal in the bulk contract or excluding it for a reduced price were discussed, and the decision was made to exclude it, realising a corresponding contract price reduction. The final contract provided for TRILITY to meet the cost of a further independent condition assessment. Should that assessment confirm that replacement was required within the contract term, that work would be carried out as a variation.

Because of emerging increasing housing demand and stricter regulatory conditions a further more detailed condition assessment and replacement feasibility study was carried out by WSP Consultants in 2022 which indicated a heightened risk of failure from 2024 onwards. Accordingly, an allowance for a full replacement was made in the 2024 LTP budget in a staged approach. The current budgets are as follows;

Year	24/25	25/26	26/27	27/28
LTP Budget (\$000)	400	400	2500	2500

During the current progression from concept to detailed design and site risk evaluations for this work, further analysis has been done, particularly around the feasibility of managing continuous flows during renewal construction, and also in the event of an unexpected and sudden failure of the line during normal operation.

Issues highlighted by this design and operations risk process are:

- High current risks around managing a sudden break or burst. Long distances from the city and poor heavy vehicle access significantly impact the ability to control overflows while a break is repaired. This is the only link between Ngongotaha and the city, and a break in this line would cause a loss of service the Ngongotaha and Hamurana network, resulting in a high likelihood of a significant sewage overflow. Such uncontrolled overflow carries significant regulatory risk and penalties.
- Poor feasibility of replacing the pipeline in multiple stages over several years. The most effective and least risk method is to install a full parallel pipeline and conclude with carefully-planned cut-over procedures at each end from the old to the new pipeline.
- The length of this pressure main. These types of assets do not typically experience full simultaneous failure in their entirety. They will typically exhibit single-point failures at increasing frequency. With such a critical pipeline, one failure is likely to cause significant environmental, regulatory and reputational damage and on a line of such length, the chance of one point of the line experiencing an early failure is considered to be high.

Considering the criticality of this asset, the above limitations in the ability to mitigate operational risks, and the need to carry out renewal in a single stage, it is now not considered prudent to carry the risk that this pipeline will exceed its indicated remaining useful life.

In addition to the technical risks identified above, there are also now two planned developments that are significant additional drivers for proposed acceleration of this project’s timing.

The Summerset comprehensive care retirement village is a facility of 300-plus living units and associated facilities planned for a 14 ha site between Fairy Springs Road and the Ngongotaha cycleway near the Rainbow and Fairy Springs tourist attraction. The stormwater discharge from this site is proposed to be via a bank of large diameter culverts crossing the alignment of the cycleway and sewer main and discharging to a proposed large open channel and then to Lake Rotorua. The work involved in installing these culverts poses a significant risk to the integrity of the ageing sewer pipe, to the extent that such work would not be supported by wastewater asset managers. The development will also require at least one sewer connection to be made to the rising main, which also poses a risk to the integrity of the existing pipeline.

There is also a Council-led proposal to develop Council land between Kawaha Point Road and the Waikite Sports Club. This involves the construction of a new road above the rising main alignment which poses a further risk to the existing pipeline. Replacement of the rising main with a new pipe would then enable the construction of any new roads and services associated with this development.

Some 200 additional housing development has been consented for the Ngongotaha area that will increase flows in the pipeline.

### **3. TE MATAPAKI ME NGĀ KŌWHIRINGA DISCUSSION AND OPTIONS**

Under the current LTP programme budget profile, this work will not be able to be carried out until at least mid-2027, during which time the risk of asset failure and associated consequences will increase unacceptably. Considering the high criticality of this asset, it is strongly recommended to pre-empt a failure risk with proactive renewal.

In view of the pipeline failure risk identified, the proposed housing developments may be delayed if the pipeline renewal is not advanced.

The detailed design for this work is well-advanced and this work should be able to be completed around mid-2025. If the existing LTP budget was brought forward and spread evenly over the current and next financial year, materials could be procured and the works could commence this financial year, and be completed early in the 25/26 financial year, which only results in a short a delay over the year that heightened risk arises.

It should be recognised that whilst condition monitoring and failure prediction technology are improving all the time, the predicted lives of underground assets are still only informed estimates, and it is always entirely possible that such an asset may experience a sudden failure at any point in its working life. This needs to be recognised in renewal planning and decision making, particularly with critical assets such as this.

### **4. TE TINO AROMATAWAI ASSESSMENT OF SIGNIFICANCE**

The decisions or matters of this report are not significant in accordance with Councils Significance Policy.

## 5. NGĀ KŌRERA O TE HAPORI ME TE WHAKATAIRANGA COMMUNITY INPUT/ENGAGEMENT AND PUBLICITY

This is the renewal of an existing infrastructure asset, so community engagement is expected to be limited to informing mana whenua of the upcoming work and seeking any input, and publicity about potential impacts during construction on users of the cycleway and other transport corridors, as well as neighbouring properties. Any work in private property will also require prior consultation with the owners.

## 6. HE WHAIWHAKAARO CONSIDERATIONS

### 6.1. Mahere Pūtea Financial/Budget Considerations

There will be some financial impact in individual years by accelerating borrowing costs, but this will be offset by reduction in later years, and also by the avoidance of inflationary impacts that will increase the construction cost over the next several years.

The earlier than anticipated financing costs would be significantly lower than the costs to respond to a sudden and reactive repair and any potential regulatory penalties.

The financial effect of this decision on the Long-Term Plan estimates are:

	<b>Increase (Decrease) in debt</b>	<b>Increase (Decrease) in finance costs</b>
2024/25	\$2,607,500	\$110,300
2025/26	\$5,280,250	\$246,600
2026/27	\$2,535,250	\$123,500
2027/28	-\$281,000	-\$14,100
2028/29	-\$281,000	-\$14,600
2029/30	-\$281,000	-\$15,500
2030/31	-\$281,000	-\$15,500
2031/32	-\$281,000	-\$15,500
2132/33	-\$281,000	-\$15,500
2033/34	-\$281,000	-\$15,500

### 6.2. Kaupapa Here Me Ngā Hiraunga Whakariterite Policy and Planning Implications

There are no policy or planning implications. The recommendation is consistent with Councils Infrastructure Strategy and Asset Management Plans.

**6.3. Te Aromatawai Whakapātanga Ki Te Tāngata Whenua  
Tāngata Whenua Impact Assessment**

There are no effects on tangata whenua in ways that are different to or more intensive than other parts of the community.

**6.4. Tūraru  
Risks**

There are no major risks associated with the decision or matters.

**6.5. Te Whaimana  
Authority**

The committee has the authority to approve the recommendations of this report, as per the Councils Delegation Register.



**7.3 MAJOR CAPITAL PROJECTS UPDATE - STORMWATER MANAGEMENT IAF PROGRAMME**

**Prepared by:** Stavros Michael, Group Manager, Infrastructure and Assets  
**Approved by:** Andrew Moraes, Chief Executive  
**Attachments:** 1. Project Review - Stormwater Management IAF Programme

**1. TE PŪTAKE  
PURPOSE**

The purpose of this report is to receive an update on council's key strategic capital projects.

**HE TŪTOHUNGA  
RECOMMENDATION**

1. That the report 'Major Capital Projects Update - Stormwater Management IAF Programme' be received.

# PROJECT REVIEW – JULY 2024

STORMWATER MANAGEMENT IAF PROGRAMME

## 1. Project Overview

Project Name: Stormwater Management IAF Programme

Project Manager: Neil Cawdry

Reporting Period: 16 June 2024 to 15 July 2024

In 2021, the Government announced the Infrastructure Acceleration Fund (IAF) initiative as part of its Housing Acceleration Fund. The IAF was designed to provide support funding to new or upgraded infrastructure (such as transport, three waters and flood management infrastructure) to:

1. Unlock housing developments in the short-to-medium term, and
2. Enable a meaningful contribution to housing outcomes in areas of need.

The IAF is administered by Kainga Ora.

Council secured support funding of \$84.6M for stormwater management.

The funding agreement requires RLC's stormwater enabling infrastructure projects to improve capacity and capability for unlocking and enabling a mix of 3,086 brownfield and greenfield dwellings in the Central and Western Area Development between 2023 and 2031.

RLC's IAF supported programme is currently made up of 8 primary stormwater projects 9 (map attached).

- West 04 Pukehangi area storm water improvements including Linton Park, Wright, and Mangakakahi Dams
- West 06 Kawaha Point storm water improvements (Frank Street/Waikite rugby club)
- West 07 Springfield & Utuhina Channel storm water improvements
- West 08 Koutu storm water improvements
- Central 03 & 04 Whakatau street / Glenholme area storm water improvements
- Central 05 & 06 Fenton Park / Street storm water improvements
- Central 08 Central C storm water improvements (near recycling centre)
- Central 09 Racecourse storm water improvements

### **1.1 Project Status: On Track with the current revised planning, and contract variation process underway with KO.**

#### West 04 (Pukehangi area and dams)

During pre-feasibility analysis of all projects, some concepts were found not to be viable or not to be yielding as much positive impact as expected. Further options were explored, and alternative solutions were put in a variation proposal to the funder (Kainga Ora). As a result of this analysis, the Utuhina River capacity enhancement project which has a potential significant impact has been pursued.



*Linton Park West, Wright Park, and Mangakakahi Dams*

The Linton Park West was superseded by capacity enhancements of Linton Park east and the Wright Park proposed dams were found to be unfeasible for geotechnical and detention volumes and work on those projects has been terminated. Work on Mangakakahi Dam has been reprogrammed to commence in April 2025. The Pukehangi Heights (District Plan Change 2) area project awaits confirmation of acceptance from the funders prior to proceeding.

*Linton Park East Dam New Spillway modifications*

This project has commenced and will achieve most of the outcomes intended from the Linton Park West dam. Preparation for the lodgement of a retrospective resource consent for Linton Dam East is progressing. Draft documentation review is complete and has been forwarded to iwi for early review and feedback. A pre-application meeting with the Bay of Plenty Regional Council is being arranged to obtain early additional advance feedback on the application. The spillway modification design and peer review thereof is nearing completion. This is required for the lodgement of the building consent amendments to Waikato Regional Council. The spillway modifications cannot be commissioned until the Bay of Plenty Regional Council approve the consent as it relates to the hydrology and additional attenuation potential of the dam. The final scope of this project is progressing. It will be fully informed by stakeholder inputs, final consent conditions and any further mitigation measures deemed necessary by the Bay of Plenty Regional Council for the management of the ongoing effects assessment and the site restoration plan that is still to be developed.

*Pukehangi Road Storm water Improvements*

This project is currently on hold. The initial project scope will no longer proceed in its current form with the budget and final scope of this project to be revised and transferred to the wider PC2 solution. Upon formal confirmation, this project will be reset.

West 06 (Frank Street/Waikite Rugby Club)

The Frank Street/Waikite Rugby Club project has commenced. The proposed development on the site has been reconfigured but still has some technical challenges to overcome. The team is in the position to engage further with the Regional Council on this solution option and work has mostly now stopped pending the outcome of these discussions. It has been proposed to expand this project with a reallocation of funds from the West 8 project (Koutu) which the funder appears to have accepted. The expanded area will seek to make some improvements further west up the catchment; however, the main priority is the combined Frank Street, Waikite rugby club, Boille Park site development. Due to the project complexities encountered, the initial feasibility budget allocation has been exceeded. The budget to cover the shortfall will come from the storm water renewals budget as the project will require renewal of existing facilities.

West 07 (Springfield/Utuhina)

This project's original scope on the golf course is no longer proceeding and this project will be re-named. This project has been proposed to be split, with the main element proposed to become the Utuhina River Capacity Enhancement project and a second smaller portion being local stormwater network improvements in the vicinity of the Springfield area. The smaller project has commenced feasibility work and is at the early stages.

The Utuhina River capacity improvement project has been deemed by the funder to be a material change and ministerial approval is required. RLC has provided initial documentation supporting the variation and the funder is currently supportive of our proposal. It has however requested additional supporting information and RLC are in the process of providing that information. This project has an investigative work package currently underway to confirm the enhancements that can be achieved and evaluate some of the existing constraints and challenges.

#### Central 3&4 Whakatau Street / Glenholme Area

This project has commenced. After reviewing the options for the project, the preferred option has been selected. Given the complexity and risks associated with the preferred solution, the detailed design phase has been accelerated in parallel with the feasibility phase to provide further detailed investigation and mitigation of the risks early in the project. This will provide more assurance around the projected costs and the scope of the final solution.

This is the single largest project in the IAF programme and was also one of the initially fast-tracked projects. Its initial proposed accelerated feasibility completion date for 30 September 2024 is not likely to be met, however this project phase is still well ahead of the original contractual completion date. Discussions with the funder indicate an acceptance of an extension of time.

#### Central 5&6 (Fenton St / Fenton Park)

The Fenton Street Stormwater project has commenced. This is another of the larger projects in the IAF programme with commensurate risk and complexity that is being considered during the feasibility stage to determine the full scope of the project to be advanced to the detailed feasibility stage. The pre-feasibility report is currently being reviewed by various stakeholders.

Variation discussions are currently underway with the funder on feasibility completion dates. This project has been fast tracked, and is still ahead of the contracted completion date, although the first revised accelerated projected completion date of 30 September 2024 is no longer going to be met. Indications are favourable that a revised completion date will be accepted.

#### Central 08 (Recycling Centre Stormwater)

This project has now commenced with the early part of pre-feasibility underway.

#### Central 09 (Racecourse)

The project will only start in January 2026

## **2. Progress against Milestones**

The milestones are structured around the 3 main stages which are:

- Feasibility
- Detail design
- Construction.

All projects, with the exception of Linton Dam East detail design (which covers the retrospective resource consent application process), are still in the feasibility stage.

Upcoming Milestones:

The Linton Dam retrospective resource consent application is expected to be lodged in September or October.

**3. Project Schedule**Current Timeline:

The original programme had only 4 main projects progressing in 2023 and 2024, but 7 projects have now been commenced in line with a revised proposed programme submitted to the funder in February as part of a comprehensive variation.

The projects are all proceeding currently in accordance with the revised programme with the exception of the Pukehangi heights development project, which is awaiting approval.

Schedule Variations:

A comprehensive contract variation process is currently underway with the funder. During feasibility work undertaken in 2023, some of the concepts used to structure the programme were found not to be viable or not offer as much improvement as originally expected. After a comprehensive review, the revised project plan and timeline has been provided to the funder. Formal approval from the funder is still awaited, although it has been indicated that most aspects of the proposed variations are likely to be accepted.

During the comprehensive review, 3 projects were accelerated and commenced ahead of schedule to keep momentum moving on the programme, namely Central 3&4, Central 5&6 and West 6.

The Utuhina River project is a new project and therefore requires ministerial approval. There is risk with obtaining this approval as this is a project that interfaces with the BOPRC's functional responsibilities. Some advance investigative work packages have been required on this project to confirm and validate the projects viability.

**4. Budget and Expenditure**

Source of Funding	\$ (excl. GST)
Rotorua Lakes Council	\$17,621,000
Development Contributions or Financial Contributions	\$12,778,000
Crown Infrastructure Partners	\$7,393,000
Kainga Ora (capped)	\$84,599,000
	<b>\$122,391,000</b>

Council is responsible for any shortfall in funding.

Year	Budget
2024/25	\$6,997,290
2025/26	\$29,610,134
2026/27	\$48,262,404
2027/28	\$27,920,128
2028/29	\$1,231,087
	<b>\$122,391,000</b>

The contract provides that the cost of feasibility works which do not lead to implemented solutions will be met by Rotorua Lakes Council. The feasibility costs of the proposed Wright Park dams, which were found to be unfeasible for geotechnical and detention volumes, was \$125,431.

Budget Status:

Due to the complexities and challenges encountered on the overall programme thus far, there has been a significant slowing of expenditure, however the revised schedule and acceleration initiatives will accelerate expenditure in the later years of the programme.

**5. Risk Management**

Current Risks:

Below is a summary of the main risks associated with the IAF programme

Risk	Mitigation
Comprehensive variation request approval	RLC has presented their proposed changes to the funder. The funder has requested further information, which RLC continues to provide as required. One of the main proposals has been deemed to be a material change and requires ministerial approval. RLC continues to provide the required supporting information. The West 04 portion of the variation is now proceeding separately to other elements of the change proposal, which require additional information.
Project Complexity	Project complexity in the built environment is being encountered on most projects. This complexity with residual and embedded risks is resulting in slower feasibility progress. More detailed feasibility work is therefore being undertaken to better identify, mitigate and manage risks. This approach also provides the flexibility earlier in the project cycle to adjust the project solution to reduce residual risk levels as far as possible.
Linton Park Dam East dam retrospective resource consent application	The risk is that the resource consent application may not be granted as envisaged or additional scope and consent conditions are imposed. Best practice has been applied to the dam design and management approach. Engagement with Iwi is underway, and feedback received will be incorporated as able. A pre-application meeting has been arranged with BoPRC to obtain any early advance feedback prior to lodging the consent documentation. Any additional work or requirements arising from the resource consent process, are beyond the control of RLC.
Inflation effects on programme cost	While inflation pressures are outside the control of the RLC, Project costs will be closely monitored. Value engineering will be applied to the projects where possible. If there are still unmitigated cost risks, the projects scopes will be staged. Should additional budgets be required, Council approval will be sought prior to proceeding.

## 6. Issues and Resolutions

The finer aspects of the variation proposal to the funder (Kainga Ora) are being reviewed and dialogue with Kainga Ora continues.

## 7. Quality Assurance

The PSG that governs the programme meets regularly to make the programme related decisions. At these earlier feasibility stages, RLC internal stakeholders review and provide input into the proposed solutions through the refinement process. Regular reporting to the funder takes place through monthly meetings and reporting.

## 8. Stakeholder Engagement

### Stakeholder Communications:

No formal distributed communications are being issued at this stage. The two current stakeholder engagements are as follows:

- Formal engagement regarding Linton Park Dam East with Iwi is underway (Ngāti Whakaue & Ngāti Kea Ngāti Tuara). A follow up meeting regarding the retrospective resource consent has occurred with documentation review still underway
- For the next stage of the Utuhina river investigation, which is currently underway, Iwi were notified of the investigation. There was some initial resistance to the project and the first stage of the investigation was delayed to provide further high-level clarification. An additional meeting was held within Iwi facilitated by RLC's partnership advisor.

### Stakeholder Concerns:

#### *Linton Park Dam East*

Iwi representatives raised concern around the ecological and downstream effects of the project at the first meeting. These concerns were addressed through articulation into draft consent conditions in the resource consent and shared with Iwi to ensure mutual agreement.

#### *Utuhina River investigation*

Iwi representatives raised initial concern over the erosion issues in the lower reaches of the Utuhina and the effects of sedimentation at the mouth of the river blocking the geothermal discharge areas. These concerns have been noted and once the results of the investigation have been evaluated, will be discussed further with the affected Iwi and community stakeholders.

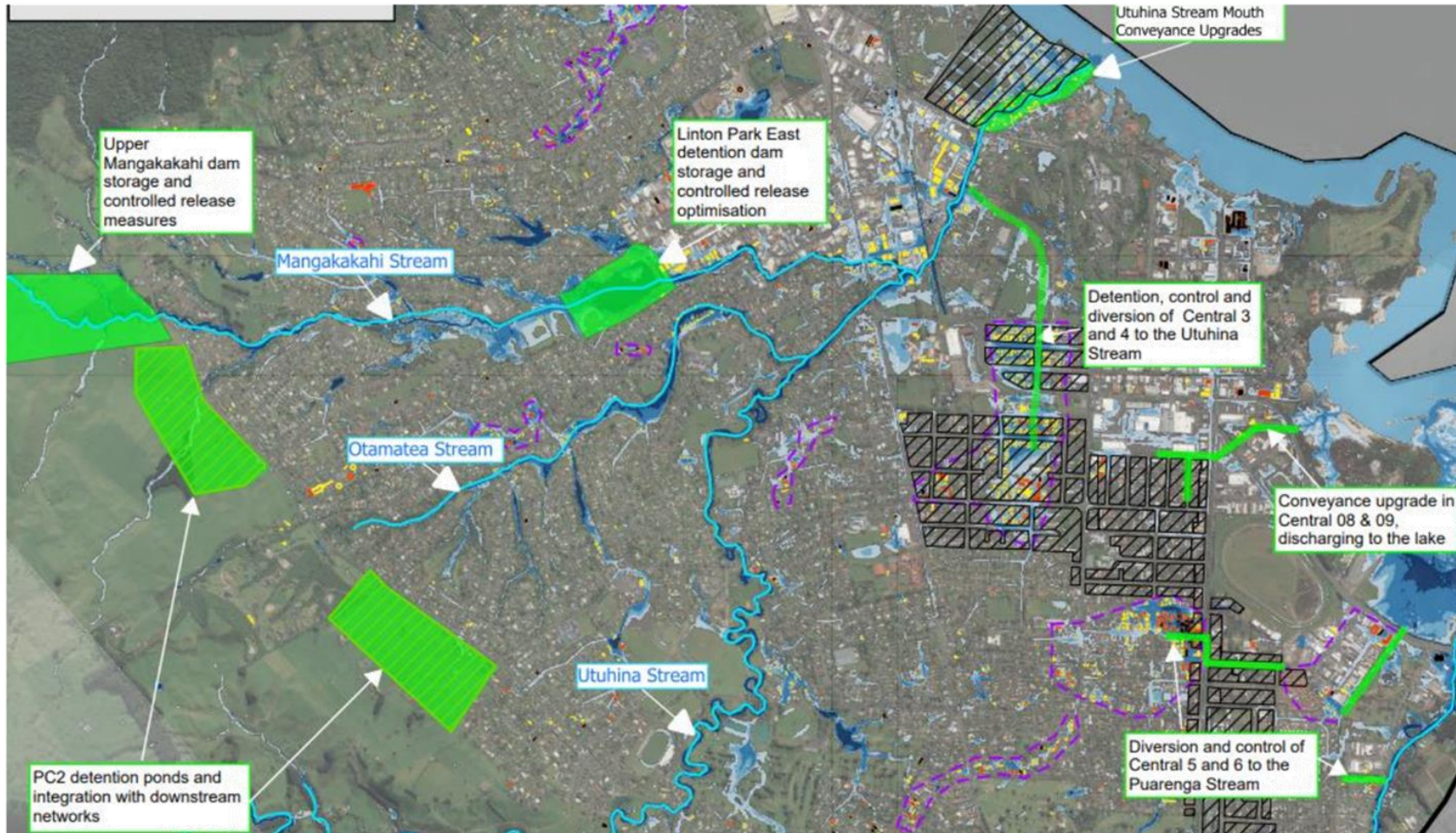
## 9. Next Steps

### Planned Activities:

Continuing dialogue with Kainga Ora continues as required. Project work continues.

### Focus Areas:

The provision of the remaining required information to Kainga Ora for the variation is a priority.



**7.4 MAJOR CAPITAL PROJECTS UPDATE - MUSEUM PROJECT**

**Prepared by:** Thomas Collé, Chief Financial Officer

**Approved by:** Andrew Moraes, Chief Executive

**Attachments:** 1. Attachment Progress Report for Rotorua Museum Project

**1. TE PŪTAKE  
PURPOSE**

The purpose of this report is to receive an update on council's key strategic capital projects.

**HE TŪTOHUNGA  
RECOMMENDATION**

**1. That the report 'Major Capital Projects Update - Museum Project' be received.**

ATTACHMENT  
PROGRESS REPORT FOR  
ROTORUA MUSEUM PROJECT



## 1. Project Overview

Project Name: Te Whare Taonga o Te Arawa (Rotorua Museum) Strengthening and Restoration Programme  
Project Sponsor: Thomas Collé  
Reporting Period: 17 August to 18 September

### 1.1 Project Status: On Track

Construction has progressed well through this period with substantial effort focused on the basement strengthening and the scaffolding to enable roof works to proceed. Mechanical and electrical works have commenced with the sub-contractors commencing demolition and testing of existing equipment. First fix electrical ongoing in Zone 1. Several product changes have been successfully approved which in turn has resulted in a reduced risk profile on procurement for the contractor and the project programme. The design and engineering teams are visiting site weekly and collaborating with the contractor to address clarifications and suggested remedial works on site to remove any uncertainty moving forward. We do still have a minor delay on the Plant Room while we wait for Unison to approve the placement of the foundations in relation to the 11Kv line. This is not on the critical path so does not impact overall programme. There has been an increased volume of RFI's from the contractor as the work progresses for the consultant team to address and is working well and the majority of items being turned around in the required period or prioritised after site discussions with the contractor

## 2. Progress against Milestones

### Milestones Achieved:

- Approval for substitution request for Rockbond FRCM product
- Completed infill works at Zone 1 and Zone 6
- Excavation of Lift Shaft completed
- Scaffolding and building wrap completed for Zone 4, 5 and 6
- Commenced removal of roof tiles in Zone 6
- Commenced installation of structural steel in Zone 1
- Completed removal of Turrets
- Commenced electrical in Zone 1

### Upcoming Milestones:

- Formwork and Concrete work and blockwork for Lift Pit Zone 2
- Commence Structural work for Roof Zone 4 to 6
- Commence remedial work to Reid Braces
- Commence install of FRCM anchors in Basement
- Temporary propping and excavation for ground beams in basement

## 3. Project Schedule

Gantt Chart of construction works dated 2024 July 02 (REV 3) being monitored

### 3.1 Schedule Variations

Overall programme is on track. There is a minor delay in the plant room with the discovery of the 11Kv power cable, however this is not on the critical path. WSP coordinating with Unison to obtain Engineering Report. Zone 3 scaffolding is roughly 2 weeks behind, however other works are being advanced which was alerted as works are being balanced to enable sub-contractors to establish and remain on site.

No formal variations have been submitted by the contractor however through working through some design changes and discoverable issues there are some items that are of priority:

- Main entrance stair remediation – awaiting methodology for the works
- Fibre Cable repositioning – under review
- Removal of Structural Collars to Zone 2 Basement Columns – negative VO

- Skylight Engineering – assessing options with engineers and designers
- Electrical wiring upgrade. Existing 1.5mm cable to 2.5mm.

**4. Budget and Expenditure**

Construction Budget FY 24-25	\$18,490,700
Forecast expenditure FY 24-25	-\$18,287,700
Contingency utilisation (construction insurance)	-\$500,000
Variance this period (negative)	-\$297,000

Current Financial Year Budget: \$18,490,700.00 (Construction Element)

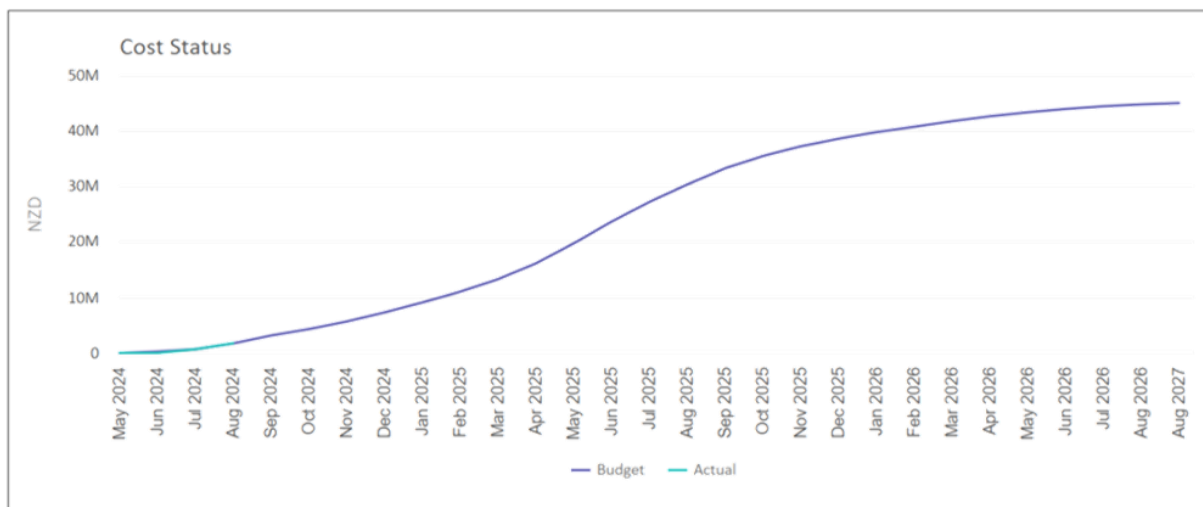
Current Financial Year Expenditure:

Is Budget on Track: YES

Budget Status:

Cost status is tracking as per cost curve below and within budget:

**13. Cashflow graph**



**5. Risk Management**

Current Risks:

- Funding for the exhibition element of the programme has not been confirmed.
- Delays in construction may increase costs and may also impact the exhibition component.

A project risk register review was held on 16 August 2024. Risk register updated as new risks are identified. Follow up Risk Review meeting to be held on 20 September 2024. High risk items include Fire Monitoring, Hydrogen Sulphide Gas Exposure, working at heights and preservation of heritage components.

**New Risks Identified:**

1. Excavation for plant building – ON HOLD. 11KVA cables located. WSP following up. Cost Risk.
2. During removal of services in basement – main fibre line could not be relocated. WSP conducted site visit on 16 September with RLC recommended provider. Cost pending to temporarily relocate.

## 6. Issues and Resolutions

**Current Issues:** (note - none of serious consequence)

Quantity Surveyor (Aecom) Lead has indicated a replacement be brought into the project – CV and explanation submitted. No impact to project costs, meeting 19 September to discuss roles and responsibilities to be held.

Skylights for Northern part of roof. Drawings and specification note items as being custom. In review with DPA/W&H.

Hollow floor identified in Z5 (under baths). Solution required for structural intent to be achieved.

**Resolved Issues:**

Crack repairs in basement resolved. Contractor addressing based on parameters set by Structural Engineer.

Bonding of Pumice product reviewed on site. Structural Engineer satisfied with the product selection and way forward.

## 7. Quality Assurance

Approval granted for incorporating the Observation tool in Procore. This will allow the teams to identify on site quality and issues in real time.

WSP conducting frequent walkthrough on site. No immediate quality issue to report. WSP requested ITP for review

DPA conducting frequent visits and issuing observation reports; while on site time is also allocated to contractors' Architectural representative to discuss work methodology as well as planned work for various sections of the project.

Dizhur have been conducting weekly site visits with the intent of resolving site issues and any quality issues. Tests were witnessed for both the bonding of the Pumice mix in the basement and the pulling of anchors for Zone 1.

While on site time is also allocated to contractors' Structural representatives to discuss work methodology as well as remediation of various sections of the structure

## 8. Stakeholder Engagement

### Museum Communications – August 2024

The start of August saw our first visual Museum Project Update summarising what was going to happening in July and Sept (FB).

This also set out areas of this progress that we were going to focus on over the two months until the next visual Museum Project Update (covering Oct-Dec 2024)

While there was lots happening inside the building the main focus was the exterior where people could see work happening for the first time since closure.

During the scaffolding and wrapping phase of the North Wing Geeves Scaffolding gave us some amazing drone photos of the buildings which were very well received, and led to a 'Guess the length of Scaff Competition' which received 181 entries in the first 24 hours. The winner will be taking a private tour with Stewart and Watts & Hughes on 2 Oct

### Museum Communications – September 2024

We have continued sharing weekly stories about the Taonga Care Wānanga that were held by the Museum Collections team in collaboration with Te Papa Tongarewa, National Services Te Paerangi.

Behind the scenes we have been working on some stories that will be released before the end of September:

- Video with Brent (DPA Architects) and Bevan (Watts & Hughes) talking about the warm roofing system and some of their favourite moments on the build so far.
- Story (article and photos) about Syd Martin who was a builder at the Bath House 50 years ago when changed to art gallery. His dad was also a saxophone player who played at Tudor Towers. He visited the Museum earlier this year and had a tour with Stewart inside
- Video with Callum (Watts & Hughes) about the strengthening work happening inside the South Wing (this might come out in October)

## 9. Next Steps

Planned Activities:

Ongoing update to heritage register – W&H

Solution for plant building (11Kva cable impact) – RLC/WSP/W&H

Focus Areas:

Focus area for the next period will be completing paperwork that has accumulated in regard to the increased work and focus on the discoverable aspects of the design and proposed variations that have been early warned. With the scaffolding complete and the work to the roof starting there will be considerable focus on this aspect in the next reporting period.

**7.5 INFRASTRUCTURE AND ENVIRONMENT PROGRESS REPORT**

**Prepared by:** Stavros Michael, Group Manager, Infrastructure and Environment

**Approved by:** Andrew Moraes, Chief Executive

**Attachments:** 1. Infrastructure and Environment Progress Report

**HE TŪTOHUNGA  
RECOMMENDATION**

1. That the report 'Infrastructure and Environment Progress Report' be received.

# Progress Report



<b>To:</b>	Mayor, Chair and Members – Infrastructure and Environment Committee
<b>Meeting Date:</b>	2 October 2024
<b>Group:</b>	Infrastructure and Environment
<b>Group Manager:</b>	Stavros Michael
<b>Report approved by:</b>	Andrew Moraes, Chief Executive
<b>Components:</b>	Network performance – Transport; Network performance – Waters; Environmental Performance; Emergency Management; Active and Engaged Communities

## Stats and Facts

**AUGUST**  
**2024**

**Connection applications in August 2024:**

	No of applications	New dwellings connected
Water	15	19
Stormwater	2	2
Wastewater	11	11
<b>Totals</b>	<b>28</b>	<b>32</b>



*Boyes Park playground renewal*

**Morey Street Reserve**

The remaining Shovel Ready Funding (\$13M) has now been received. The full project completion is scheduled to be in November.



*Students and whānau discuss waste minimisation*

**Wastewater schemes progress**

East Rotoiti/Rotomā: 90% completed  
Tarawera: Project at 44% completion, 353 of 427 of boundary connections installed – Progressing Stage1.



*Renewed playground at Boyes Park*

**Ohu: Waka | Network Performance - Transport**

**Transport Capital Projects**

Programme	Projects	Progress
Subsidised renewals	Resurfacing (critical for maintaining integrity of road foundations)	2024/25 reseal programme being finalised to align with known budgets. Target is reseal 6-8% of total network. Average lifespan of seals is 15 years.
Subsidised renewals	Pavement rehabilitation (about 0.3% of network targeted per year)	Matahi Rd pavement rehabilitation tender now awarded with construction expected to commence late September subject to award.  Strathmore Rd pavement rehabilitation to be tendered in September with construction expected to commence in October subject to award.
Subsidised renewals	Footpaths (approx. 600km of footpaths in total in Rotorua)	2024/25 NZTA budget for walking and cycling means there will be limited subsidised funding for footpath renewals for 3 years. Focus will be only on safety repairs.
Subsidised Cycleways (LOS)	About 60km of cycleways constructed since 2018	No funding in LTP years 1-3 for new cycleways/shared paths. No new cycleways are planned. Exploring the use of the LTP allocated share about \$350k.
Subsidised Minor Improvements (LOS)	Local road improvements	No NZTA funding allocation means that projects will be limited and prioritised for the next 3 years. Lichenstein Rd resilience improvements prioritised for construction in 2024-25 followed by Oturoa Rd safety improvements in year 2.  Speed Management Plan on hold pending new national policy direction. No NZTA funding has been allocated for speed management infrastructure. A purely reactive posture will be adopted to address current risk as required.
Subsidised Emergency Works	Emergency storm damage repairs to restore level of service (LOS).	Emergency works from the May 2024 storm event - 90% complete with Linton Park Link shared path remaining to reinstate in October 2024.
Unsubsidised Renewals	Parks road renewals to maintain integrity of road condition	Sites programmed for 2024-25 resealing programme being finalised and embedded into contractual schedules for Q 3 and 4.
Unsubsidised Street Improvements (LOS)	Improvements to enhance LOS to rural and urban areas	No provision in LTP years 1-3 for urban/rural street improvements. No plans for this activity.
Unsubsidised Rural Seal Extension (LOS)	Lichenstein Rd	Lichenstein Rd designed and prioritised for seal extension this year. Tawhero St West design complete but unlikely to fit within approved annual budget limits.

Programme	Projects	Progress
Unsubsidised Growth (LOS)	Upgrades to support growth	Porikapa Rd Shared Path (CIP) expected to be fully completed September 2024. East Gate intersection improvements in detailed design, awaiting NZTA planning approval. Once approval granted, works will be tendered and we will seek NZTA financial support. A tender report will be provided to the Committee for direction.
CERF-funded Transport Choices	Shared paths and zebra crossing upgrades (various)  BOPRC Enhancing Public Transport in Rotorua	No NLTP or LTP funding available to implement CERF-designs (shared paths). Refresh Project on hold. Proposed new bus stops/shelters on Amohau St to accommodate new bus routes. Government funding for these works is not available.

**Transport Operations**

- Programmed seal maintenance proactive/cyclical and reactive works are ongoing and no material defects or service disruptions have occurred.
- Unsealed road metalling programme up to the level allowed by available budget but ready to respond to weather impacts if and as needed.
- Storm damage works: general reactive clean-up and reinstatement from weather events ongoing and are adaptive to the risk created by new weather events.
- Environmental maintenance: seasonal mowing planned to start in October.
- Traffic services maintenance: new road marking tender awarded and street light maintenance ongoing. An extension of the streetlight contract to June 2028 has been approved.
- Network and Asset Management: 2024/25 annual condition surveys will now be carried out nationally by NZTA. Future funding levels likely to be allocated on basis of identified road condition which will inform forward work programme development, treatments and activity management planning going forward.

**NZTA/Waka Kotahi State Highways**

The National Land Transport Fund decisions have been made in early September 2024.

None of the Rotorua district State Highway Improvement priorities have been funded.

Council officers and elected members will be discussing with BoPRC and NZTA partners options to address the effects of those decisions by the NZTA Board.



**Ohu: Wai | Network Performance - Water**

**Main Water Capital Projects**

**Water Main Renewals**

Background	Progress
<p>Renewal and upgrade of water mains is essential to ensure asset sustainability, resilience of the water supply network and to reduce water loss from ageing pipelines.</p> <p>On average, approx. 1.5% of the 800km network is renewed per year. Average life expectancy is 75 years.</p>	<p>A 2024/25 package of work has been awarded. This package will target leakage. Old, galvanised iron service pipes will be replaced, and the existing delivery main left in service due to galvanised iron pipe having a significantly lower expected lifespan.</p> <p>The Koutu area is being targeted for renewal. Streets include; Tudor, Nihokiri, Tatai, Tiwha, Taharangi, Huratai, Russell, Westlock, Frank, Mill, Ian, Bellvue, Koutu, Haumoana, Karenga and Raukura.</p> <p>We are also replacing 2km of water main along Kaharoa Road, due to the existing pipes poor condition.</p>

**Water Main Upgrades**

Background	Progress
<p>The Reporoa water network has two water sources located on either side of the network, Wharepapa and Deep Creek.</p> <p>New water take consent conditions mean less water can be taken from the Wharepapa Spring. To offset this more water will need to be pumped from the Deep Creek Spring. As Deep Creek and Wharepapa are on opposite sides of the Reporoa network, upgrades of key distribution mains are required to ensure Deep Creek can pump water throughout the network.</p> <p>The Reporoa water main upgrade is to be delivered in 3 stages.</p>	<p>Stage 1 was successfully completed in FY 2023/24 when the watermain on SH5 between Handcock Road and Reporoa Road was upgraded. This stage was targeted first as it replaced a section of AC pipe in poor condition. The upgrade also resulted in a reduction in water loss from the network.</p> <p>Stage 2 involves a watermain upgrade along Broadlands Road from Homestead Road to Reporoa Road. A Contract has just been awarded.</p> <p>Stage 3 is planned for FY 2025/26. It involves a watermain upgrade along Reporoa Road.</p>

**Morey Street Stormwater Detention Dams**

Background	Progress
Two detention dams under construction to reduce potential occurrence/impacts of flooding in lower catchment and provide for the upstream growth in Ngāti Whakaue Tribal Lands (NWTLS) 1100 houses. A \$15m funding agreement with Crown Infrastructure Partners (CIP) was agreed to assist with the funding of the dams.	I&E Committee approved to expand project scope and contract value to meet Regulatory Authority’s building consent conditions. The necessary contract adjustments have been made and practical completion of the earth dam embankments and the primary spillways has now been granted. The remaining Shovel Ready Funding (\$13M) has now been released. The full project is scheduled to be complete in November.

**Linton Park Dam**

Background	Progress
<p>The existing detention dam was below current safety standards and at risk of failure. This project will enhance capacity in line with the western stormwater management plan and mitigate against flooding in Mangakakahi/Utuhina catchments.</p> <p>Funding contribution of \$6.8m from Department of Internal Affairs. Balance from RLC and IAF funds.</p> <p>Works critical part of western catchment stormwater master plan to enable future housing.</p>	<p>Construction of the embankment portion of the dam is now complete and construction of lunit wall on top of dam is planned for completion in October.</p> <p>Planning is in progress to secure consents for an enhanced spillway to offset the need to construct another dam at Linton Park West.</p> <p>Applications are being submitted to the IAF programme to transfer those funds to this project to cover the additional works required. IAF has signalled preliminary support for this reallocation.</p>

**Victoria Street to Wastewater Treatment Plant (WWTP) Sewer Main Upgrade**

Background	Progress
Trunk sewer main between Victoria St and the wastewater treatment plant (WWTP) conveys sewage from the city’s central and western areas. Capacity is under-sized for increasing demand, sometimes resulting in overflows during rain events. A duplicate main will increase capacity and allow rehabilitation of the existing main.	The geothermal nature of the reserve will trigger the need for a dewatering resource consent. Initial iwi consultation for the consent considered the proposed sewer alignment through the Sanatorium Reserve incompatible with the reserve purpose. Section one from Victoria Street to Marist Rugby Park will be progressed now and new alignment options for the second section from Marist Park to WWTP are being evaluated and will be discussed with Pukeroa Oruawhata Trust and Ngāti Whakaue iwi. Agreed route will then be taken to detailed design.

**Peka Block Development Enabling - Water and Wastewater**

Background	Progress
<p>RLC is providing enabling infrastructure for water supply and wastewater services for Peka Block land development with delivery planned in two stages:</p> <p>Stage 1 – Install new water main from Hemo Reservoir to Peka Block along SH5 and install new pressure wastewater main along SH5 from just north of intersection of SH30 to Peka.</p> <p>Stage 2 - Construction of wastewater pump station.</p>	<p>Stage 1 – Contract for water and wastewater pipelines installation awarded. Construction has started and is expected to be completed by November 24.</p> <p>Stage 2 – Design of wastewater pump station is complete. A contract has been awarded. The target completion date is June 2025 in line with the development's milestones.</p>

**East Rotoiti/Rotomā Sewerage Scheme**

Background	Progress
<p>Scheme aims to remove adverse environmental effects of septic tanks and improve health of the lakes and communities. Biolytix pre-treatment units are being installed on properties, connecting to underground network leading to Rotoiti Wastewater Treatment Plant.</p> <div data-bbox="320 958 703 1339" data-label="Image"> </div> <p><i>Photo above: De-watering and trench shield set up along Wharetoroa Drive</i></p>	<ul style="list-style-type: none"> <li>• Wastewater treatment plant operating in compliance with resource consent conditions.</li> <li>• Whenua Māori and marae installations yet to progress as trustee consensus and Māori Land Court decisions are required.</li> <li>• Marae Committees to be advised Council has made final funding allocation in line with scope of the tenders and no additional funding will be provided for high-capacity systems installation.</li> <li>• 51 Whenua Māori properties will be addressed as legal matters are concluded.</li> <li>• Council has decided final net capital targeted rate for properties as part of 2024-2034 LTP.</li> <li>• Future growth properties will be addressed as they occur and installations will be made once building consents have been issued.</li> <li>• MfE Minister initiated a project review to assist him signing off the reallocation of \$10M to the project. Information on the review TORs is currently exchanged with the Ministry.</li> </ul>

**Wastewater Treatment Plant (WWTP) Upgrade**

Background	Progress
<p>Upgrade to enhance treatment capacity and quality to meet new consent requirements and growth comprises membrane bioreactor (MBR) with full UV disinfection. Completion planned for end of 2025 followed by a one-year 'proving period'. Forest irrigation remains in place pending completion of Sustainable Forest Approach (SFA) project.</p>  <p><i>Above: Civil construction of the MBR</i></p>  <p><i>Above: Flooded Inlet Pump Station excavation</i></p>	<p>Civil construction and foundations for the new Inlet Works and Lift Pump stations are progressing and on track for completion January 2026.</p> <p>Attempts to pump out the flooded excavation for the new Inlet Pump Station were unsuccessful with the in-flow of fresh groundwater being higher than the pump capability. Higher flow pumps were considered but the construction consent conditions place significant restrictions on de-watering rates, volumes and discharge locations which rule them out as an option. The nature of the flooding means the water cannot be effectively pumped out and TRILITY have made the decision to change the upgrade design to avoid the flooded area. This design is in progress (pending RLC review) and plans are being developed to safely back-fill the flooded excavation.</p> <p>Costs associated with this issue are currently assessed.</p> <p>The remaining works are continuing as planned with no substantial issues known.</p> <p>RLC is continuing to seek potential sites for the discharge of treated wastewater outside of the Whakarewarewa Forest. Early discussions are underway with Ngāti Rangitaurere for the potential to establish a wetland to the northeast of Lake Rotorua. Approaches are also being made to private landowners who have suitable land packages that may meet RLC's initial selection criteria.</p> <p>An advisory group with Manawhenua stakeholders is to be established to further explore discharge options.</p> <p>Opportunities for re-use of treated wastewater (industrial, irrigation etc.) will be considered where ever the discharge site and reticulation system allows.</p>

**Water Planning Projects**

**Resource consent renewal of four water supply takes**

Background	Progress
<p>Resource consents for 5 of Council’s urban water supplies will expire in 2026: Karamū Tākina (Central), Waipā and Hemo (Eastern), Rewarewa (Hamurana/Kaharoa) and Wai-iti (Rotoiti), Rotomā (Lake Rotomā).</p> <p>Technical assessments and iwi/hapu engagement are required to support new resource consent applications and enable cultural impact assessments.</p>	<p>Technical assessments completed and scoping underway. Application for Waipā/Hemo consents renewal accepted by BoPRC and existing use rights granted until a new consent is approved.</p> <p>Cultural Values and Impacts Assessments for Karamū Tākina and Rewarewa (Hamurana) consent applications underway. RLC working with mana whenua on the Karamū/Tākina water source (about 60% of our central supplies) to progress joint consent application. A presentation by the Iwi was made to the Committee on 4 September. A proposed relationship agreement to be presented to Council in the next two months to inform decisions on future funding requirements at the next LTP.</p>

**Rotorua Urban Area – Comprehensive Stormwater Resource Consents**

Background	Progress
<p>BoPRC requires RLC to consolidate its 39 stormwater discharge resource consents for urban Rotorua and apply for a single comprehensive consent to cover the whole urban catchment. This will be managed through a comprehensive catchment management plan for streamlined, consistent management of stormwater discharge and associated works.</p> <p>Iwi/hapu engagement is necessary for the cultural impact assessment.</p>	<p>The technical review of the resource consent application is currently underway by the Bay of Plenty Regional Council. Public notification of the application closed 4 December 2023 with five submissions received. The hearing for the consent application has been set for 12 and 13 November 2024.</p> <p>RLC have been working through various technical aspects of the consent and discussing them with BoPRC as the organisations seek to work together on various aspects of the consent.</p> <p>Te Arawa Lakes Trust provided an iwi engagement and assessment report of the AEE, and engagement with iwi in the urban area is continuing.</p> <p>Discussion with the industrial submitters has commenced and this is mainly centred around managing contaminants into the stormwater network.</p> <p>After the formal hearing process has concluded, time frames will be set for the development of the Catchment Management Plans which will seek community input, followed then by their implementation. The Catchment Management Plans will cover the maintenance and management of the various catchments.</p>

**Tarawera Sewerage Scheme**

Background	Progress
<p>Approved implementation: Stage 1 - street mains, trunk mains, pump station, including connection to Ōkāreka scheme. Stage 1 is programmed to align with \$6.5m MfE Deed Funding commitments.</p> <p>Stage 2 will be construction of 430 individual LPGP units to connect properties to the reticulation system.</p>	<p>Pump stations construction is underway. These are being modified to allow for gradual connections with extra costs managed within contingencies.</p>
	<p>The Council's decision to temporarily halt construction is intended to ensure that all parties have the opportunity to exchange and verify information, align on objectives, and determine the most effective approach moving forward. This pause also respectfully acknowledges the need for time to honour the late Māori King, Kiingi Tuheitia Pootatau Te Wherowhero VII. Additionally, it addresses safety concerns, particularly regarding the vehicles parked along the worksite and maintaining a secure environment for everyone involved.</p>
<p><i>Photo above: Saw cutting along Spencer Road</i></p>	<p>Next steps for the project will be decided once discussions with relevant iwi have been concluded. It is estimated that the delays to the project as a result of legal and security costs and contract variations, will be high and will be reported to Council.</p>
	<p>Progress: 21.9km of pressure mains installed, 14.9km pressure testing completed, 353 of 427 boundary assemblies installed.</p>
	<p>Ongoing communications and updates between RLC staff and residents' association and the collective working group established for Tarawera.</p>
	<p>Project updates are emailed to more than 350 addresses and quarterly updates to all stakeholders, including progress against budgets and anticipated risks.</p>
	<p>The flow of agreements to establish locality plans and obtain building consents is much slower than required and likely to result in contract extensions of time and additional costs to the project.</p>
	<p>Staff expect to provide Council with a status update, including any recommended actions arising from property owners' frustrating the Stage 2 process.</p>

Background	Progress
	<p>The Tarawera Community Group wish Council to make a commitment to more equitable funding support than the current capital funding plan. The Group was advised Council is not in a position to make such decisions without wider community consultation at the appropriate planning stage.</p>

**Water Operations**

**Three Waters Reforms**

The new framework for water services delivery comprises three pieces of legislation, the second of which, the Local Government (Water Services Preliminary Arrangements) Bill, was introduced in early June 2024 and requires council to submit a Water Services Delivery Plan within 12 months of the Bill’s enactment. The overarching purpose of the Plans is for councils, (individually or jointly), to publicly demonstrate their intention and commitment to delivering water services in ways that are financially sustainable, meet regulatory quality standards for water network infrastructure and water quality, and unlock housing growth.

Through development of these Plans, Councils will provide an assessment of their water infrastructure, how much they need to invest, and how they plan to finance and deliver it through their preferred service delivery model. Ringfencing of water services and revenue from other Council activities is a key feature of the Plans. The Plans can also be prepared jointly, and so provide an opportunity for Councils to have conversations with other Councils about joint arrangements for water services delivery.

To demonstrate financial sustainability, Councils will have to show what needs to be invested to deliver water services to regulated standards and to provide for growth. They will also have to show how they will fund and finance long-term investment in water infrastructure, including renewals and operating costs.

The Committee agreed in September 2024 to direct officers to start creating the Water Delivery Plan on the basis of an in-house model while options to explore other arrangements enabled by the legislation remain open and explored.

**Stormwater:**

Routine maintenance and operations are proceeding at a steady rate across the district.



*Photos above: Issues with a swale and outfall from a culvert in Redwood Park prompted excavation of the outlet and clearance of the blocked culvert by DDL/Goodricks. Coconut cloth installed for stabilisation of the ground to prevent scour.*



**Photos above:** Safety issues were noted with the old balustrade surrounding one of our gross pollutant traps which doubles as a viewing platform behind the Sudima Hotel. The old railing had a large amount of rotting timber and corroded fixings that had made the area unsafe. A like for like replacement balustrade was recently installed in a highly cost effective and timely manner by Edwards Fencing Ltd.



**Photos above:** Works began this week at the Otonga Road/Wychwood Crescent intersection to repair multiple stormwater main lines and cesspit leads, as well as the relocation of a water main that previously ran through the middle of a stormwater line. Priority has been placed on undertaking these repairs prior to an earmarked reseal of the road. Works are being undertaken by William's Drainage Ltd.

**Water Supplies:**

- Routine maintenance and operations are continuing while final procurement plans are being developed and approved for this year's work.



**Photo above:** The third pump at Deep Creek has been removed for a full service as part of our routine maintenance program. It will be sent to Christchurch to the authorised Plueger agent for New Zealand for full reconditioning to as-new condition.



- Efforts have been concentrated on leak detection in Kaharoa, Mamaku, and Okareka, as all three areas have shown high water usage over the past quarter. In Mamaku, bulk meters have been installed to divide the area into smaller zones enabling us to better monitor water flow and track both public and private leaks.

#### Wastewater:

- The main inlet screens at the Rotorua WWTP have undergone a major service.
- The desludging of the forest ponds has now been completed.
- The primary clarifier bridges and handrails have been refurbished.
- The 2024 gravity mains renewal programme has been finalised and will commence soon.

## Ohu: Taio | Environmental Performance & Climate Change

### Climate Change

Climate Commission first annual monitoring report measuring progress against Government emissions reduction plan released July 2024. First National Adaptation Plan Report was due in August and should be published soon. These reports can be accessed via the [Climate Commission's Website](#).

#### Emissions Reductions

We are undertaking various mitigation actions like enabling and encouraging active modes of transport and waste reduction to reduce emissions and energy consumption. We are monitoring our corporate emissions.

#### Adaptation

Climate change effects cause significant cumulative impacts on infrastructure and core services. The focus of current efforts is on climate adaptation in predicting impacts and designing improvements to networks that would, as far as possible, help reduce risk to properties and our receiving environment.

#### Framework and performance measures

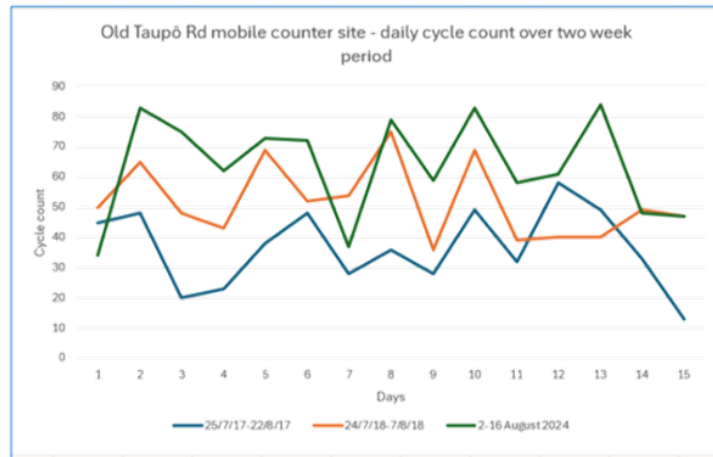
To ensure RLC meets its responsibilities and achieves targets, starting later this year, we will evaluate the Rotorua Climate Change Action Plan, national guidelines, targets and legislation, and climate preparedness guidelines, to identify action required and within our sphere of influence, and any gaps in our current work programme.

### Safe and Sustainable Journeys

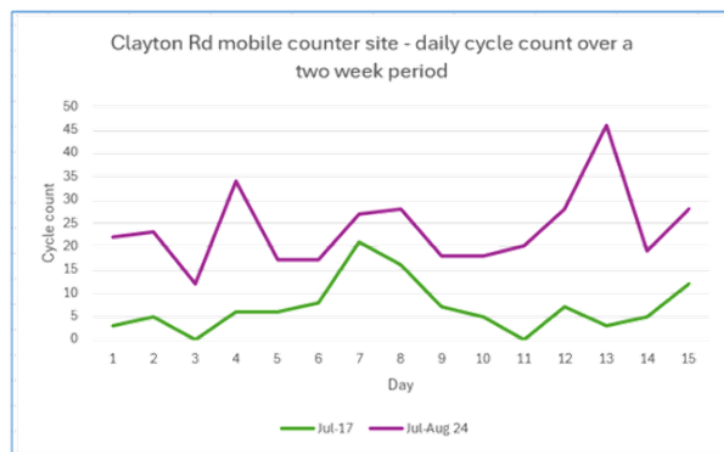
- Eke Haumarū - Bike Safety skills held at Westbrook School.
- Road Safety Education Programme held at Tarewa Marae (for recidivist drink drivers and other at-risk drivers).
- Working towards finalising review of tour bus stop locations for inner city in time for summer. Information brochure will follow (for operators). GIS map has been created and is available on RLC website.
- Significant reduction in Road Safety Promotion funding from Central Government. We have made the decision that the Road Safety Youth Expo cannot go ahead in its current format. Currently exploring options to deliver the same messages to youth but in a different and more cost-effective way.
- Road Safety Education - 'Stop and Look - before you cross' education with junior classes at Kawaha Point School.
- Mobile cycle counters are back up and running. Mobile counters were installed during and part-way through July/August on Old Taupō Road shared path (nearest golf course) and Clayton Road shared path.

Comparison charts show a pleasing increase in use for both sites (pedestrian, micromobility, mobility scooter data has been excluded in graphs below).

**Old Taupō Road shared path – constructed late 2016 (Count site adjacent to Golf Course)**



**Clayton Road shared path – constructed 2022**



**Waste Management**

**Landfill**

Investigation of existing leachate system under stage 4 of the older part of the landfill continues. This part of the landfill was constructed more than 30 years ago and is being checked to ensure it is in good working order.

Findings to date: Recent overflows in the leachate line of stage 4 and the subsequent investigation found the majority of stormwater from the dog pound was entering the sewer network via an old septic tank and then the landfill leachate line, causing blockages and capacity exceedances during intense storms. A plan to divert this to the stormwater network is being developed.

The leachate drains which receives the wastewater from the pound has been jetted and CCTV'd for 62 metres of its 140-metre length. An estimate to install a new sewer line from the pound connection to the pump station is being sought. If the leachate system is no longer suitable to receive the dog pound wastewater, this would be the best option to remove the risk of future sewer overflows and breaching resource consent and future proof the wastewater treatment from the pound. The first estimate was \$127k. Further estimates are being sought and a design is underway.

Directly underneath stages 2 and 4 is an old creek bed. During construction of these stages in the early 1990s, the creek was diverted down the boundary of the property to make room for two new landfill cells. The flow from this drain is very small, but tested positive for contaminants, indicating the presence of leachate. We have not seen any negative impact on the Tureporepo Stream through routine water quality monitoring, probably due to dilution making the effect on the stream undetectable in the larger flow. We are working on a plan to capture the subsoil drain flow and divert it to the nearby pumpstation wet well. BoPRC has been kept informed of these developments.

The work completed last year to alleviate erosion of the dog pound stream diversion channel has worked well. A new section of the channel that had been eroding needed similar treatment. This section is on the embankment that separates storm water pond A from the channel. The embankment was armoured and protected from further erosion during August. After this work was finished, small native fish were observed in the stream confirming that the health of streams in and around the landfill is restored. Continued maintenance under the landfill aftercare plan will ensure these waterways are cared for and kept healthy.



*Photo above: Armouring the embankment on the dog pound stream*



*Photo above: Rock built fish ladder in the dog pound stream*

**Refuse and Recycling Collections**

Both services are functioning well with no significant issues.

**Resourceful Rotorua Litter Reduction Campaign**

The first six months since the official launch of this campaign has shown some promising results.

Analysis of the requests submitted showed only nine requests for bins to be reinstated where they had been removed. Five of these were repeat requests for two separate bins. Staff have reviewed the impacts in terms of loose litter at these locations and haven't found any significant issue with them being removed. Both these bins were used as convenience bins for dumping household and shop rubbish and were removed for this reason. During this period, there would have been over 40,400 servicing visits to litterbins around the district. 81 requests were received to service overflowing bins (0.2%). Four requests related to dog poo and another four were related to illegal dumping beside bins. Another nine were related to various other issues.

Staff have been working with the "Be a Tidy Kiwi" organisation, assisting with Health and Safety, providing gloves, pickers, bags and the disposal of rubbish cleared by events they have co-ordinated. Staff also provide the same assistance to various other community groups and individuals who volunteer their time in this space.

**Waste Minimisation Education**

Waste minimisation activities delivered or supported by RLC have included:

- Four engagement sessions in two schools, including working with one group of students to design and facilitate a 'reduce, re-use, recycle' station at their school whānau day. A compost bin was supplied to one of the schools with plans to support further as they work to establish a worm farm on site.
- Two composting workshops – one each at Te Aka Mauri Rotorua Library and Linton Park Community Centre.
- A discussion session with the Youth Council – exploring challenges and approaches to litter and illegal dumping.

Staff are also working closely with the comms team to develop a series of articles, e.g.

- Landfills and pricing
- Illegal dumping
- Public litter bins – misuse and waste reduction
- A day in the life of a Rubbish Truck Driver – the challenges faced when collecting/lifting bins
- And other articles to come

**Water Quality**

**Contaminant monitoring.** The draft Rotorua Urban Water Quality Contaminant Monitoring Programme is being updated to support the Comprehensive Urban Stormwater Consent (CSC). Monitoring and triggered investigations inform freshwater quality management, identifying stream contaminants and informing possible mitigation actions.

**Industrial sites.** Neither Council's stormwater bylaw nor BoPRC's Natural Resources Plan (NRP) allow contaminants to be discharged to urban waterways unless permitted by the NRP. The CSC will require Council to manage urban industrial land-use effects on water quality. The draft approach has been developed with low-moderate and high-risk assessment categories for contaminant loss, along with a risk assessment for sediment loss. Moderate and high-risk sites and activities will require a stormwater licence and high-risk sites will be required to capture the stormwater prior to discharge and will be subject to stormwater quality monitoring. The approach was discussed with the industrial site owners who submitted on the CSC. Their initial feedback was positive and a follow-up meeting is planned for them to provide their collated feedback.

While Council will manage the discharges from industrial sites, discharges that are found to be non-compliant with permitted rules will continue to require authorisation from BoPRC for the discharge of contaminants. BoPRC engages with Council, mana whenua and other impacted parties through their consenting process. We would look to align any RLC and BoPRC monitoring requirements through the consenting process.

BoPRC consenting staff have indicated their support in initial discussions. Further discussions are to be held with BoPRC compliance staff to fine-tune and agree on the approach and capture in an MoU to support the Comprehensive Stormwater Consent. Council will also meet with remaining submitters and respond to CSC Submissions.

Trade waste consents and audits continue to protect wastewater network and reduce risk of sewer overflows.

## Emergency Management

### Updates

**Response:** No local emergency events to report.

#### Readiness

A draft work plan for the 2024 – 2025 year has been completed and submitted. . The plan will cover all of the 4R's of Emergency Management, but has a focus on 'readiness'; in particular

- community engagement (building resilience).
- staff training (building capability).
- developing tools that will help EOC staff step into their roles more easily when the EOC is activated (building capability).

#### Staffing and Training

Bruce Horne recently completed the residential phase of the National Controllers and Recovery Managers course delivered through Massey University. He reported favourably on the course, in particular, the quality of the presenters, resources and exercises.

Rajind Seneviratne commenced duties as EMO (Emergency Management Officer) and second FTE in the Rotorua CDEM team on Monday, 26 August 2024. Raj has specific responsibilities for Community Engagement and will be the lead Welfare Manager in an emergency response.

A CDEM Intermediate course has been arranged for late October 2024 for new staff EOC (Emergency Operations Centre). That course will be held in Rotorua and it is anticipated about 22 Rotorua Lakes Council staff will attend.

A brief summary of our EOC disposition follows:

- All incident management team (IMT) roles are filled, with the exception of lead Recovery Manager.
- Suitably experienced and qualified staff have been appointed as deputy managers for all IMT roles.
- There are currently a total of 114 staff on the EOC roster. (The Bay of Plenty regional target is 72 staff, increasing to 90 by 2031).
- 24 of the staff on the roster have been recruited in the last four months and have yet to complete basic training. However, most of those staff will be rostered to attend an Intermediate course scheduled to be held in Rotorua on Wednesday, 23 and 24 October 2024.

**Ohu: He Hapori Kaikaha | Active and Engaged Communities****Open Space Capital Projects****Reserve Improvements**

The new forestry access point from Tarawera Road has been sealed and is awaiting line marking in early September. The Kauae Urupā - Henderson Road parking has also been completed and sealed with line marking also due in September.



**Photo. New parking on Henderson Rd for Kauae Urupā/Cemetery**

Planting of Baxendale Reserve by the Te Arawa Lakes Trust has begun along the edge of the awa at the Pukehangi Road end of the reserve. This planting will continue through September and some of the walkway structures, including a bridge over a swampy area, are being constructed. The TALT ecological restoration team have also been working at Waikawau Reserve on more planting around the constructed wetland and this will continue into early spring to get plants established for the summer.



**Photo above: Baxendale Reserve riparian revegetation along the Utuhina Stream**

Sports field consultants, SSDM, and civil consultants, Blueline, are continuing to work on roading, parking, drainage and field lighting designs for two sports fields and associated parking areas at Titoki Place on the northern end of Ray Boord Park. The layout designs should be available soon with continued development of more detailed designs for consenting requirements to be applied for in October.

#### **Playground Renewals**

The Boyes Park playground renewal was completed in mid-August. Very positive feedback has been received that the park has never been so busy and the local community are rapt with the new playground which features a complete track around the outside for wheeled adventures.

A Ngāti Whakaue working group has been formed to work along with council on the plans and shaping of a new playground to replace the aging playground at Ōhinemutu. A survey will be live over the month of September and is being circulated via the Pā residents and the working committee to gather feedback from the broader Ngāti Whakaue Iwi. The survey results will inform the draft design, which will be progressed through further wānanga with the community.

#### **Toilet Block Renewals**

Site work for the new double unit permaloo toilet for Puketāwhero Park has begun and the new toilet is scheduled for delivery and installation in the second week of September. The Ray Boord Park toilet/change room has been reopened after refurbishment and is available for sports field user use. Initial design scoping work has also begun for a refurbishment of the toilet block on Hinemoa Street that will be worked on later in the financial year.

#### **Sports Facility Use and Events**

Most of the winter sports code use of the sports field network have concluded with football a few weeks away to finish. We are planning for field maintenance to occur from late August through to September which involves a short period where the fields are not available for sports use. Our summer sports codes have been notified of the spring and autumn maintenance periods and are working their season around these windows and are submitting their field booking forms for the 24-25 summer season. From these bookings, a series of field user agreements will be set up that include a variety of costs such as field hire, line marking, goal post changes etc. that will need to be reimbursed for seasonal use.

The first Bay of Plenty Steamers rugby union games in Rotorua was played at the Rotorua Stadium on 14 August with approximately 1200 fans attending. The Steamers were successful in beating Counties. The next Rotorua Stadium hosted game is 6 September with the Bay of Plenty Steamers playing Manawatu. This will be followed by a Bay of Plenty Volcanix women's game against Canterbury on 22 September.

Rotorua has hosted four Aotearoa New Zealand Māori Rugby League national tournaments this winter, with the Tamariki Tournament coming in late September at Puarenga and Puketāwhero Parks and the Tuakana Tournament in late October at Puketāwhero Park. We have also secured the NZ Rugby League Youth Rugby League tournament at Puketāwhero Park on 1-4 October and the Legend of League tournament at Puketāwhero Park on 12 October.

The annual Kurangaituku Netball tournament started in August, with the first round hosting 160 teams at the Westbrook Netball courts in the last weekend of August. This will be followed in early September with 108 teams playing in the higher grades of the second round, then in mid-September with 68 junior teams playing in round three. This tournament is in its 89th year for the senior grades and its 30th year for the junior grades and attracts national and Australian teams to Rotorua.

**Open Spaces Maintenance and activities**

Significant work during August has included several large tree removals around reserves and streets using specialised equipment to tackle difficult jobs. These trees are being removed because they have been assessed as presenting an increased risk of failure in the future due to their size, structure, age and location. Large trees are being removed in Pullar Park East, Linton Park West, Caufield Place Gully and Puarenga Reserve and this work will extend into September.



*Photo above: Tree Control contractors removing trees from Caufield Place Gully*



**8 HE WHAKATAUNGA KIA HOKI ATU TE ARONGA O TE HUI HAI HUI TŪMATAWHĀNUI – RESOLUTION TO MOVE INTO PUBLIC EXCLUDED (TO CONSIDER AND ADOPT CONFIDENTIAL ITEMS)**

**PUBLIC EXCLUDED**

1. Exclusion of the Public
2. The general subject of each matter to be considered while the public is excluded, the reason for passing this resolution in relation to each matter, and the specific grounds under section 48(1) of the Local Government Official Information and Meetings Act 1987 for the passing of this resolution are as follows:

<b>RECOMMENDATION</b>		
That Infrastructure and Environment Committee resolves to exclude the public on the grounds contained in Section 48(1) of the Local Government Official Information and Meetings Act:		
<b>General subject of each matter to be considered</b>	<b>Reason for passing this resolution in relation to each matter</b>	<b>Ground(s) under section 48 for the passing of this resolution</b>
<b>8.1 - Confidential Minutes of the Infrastructure and Environment Committee Meeting held on 4 September 2024</b>	Please refer to the relevant clause/s in the open meeting minutes.	Good reason for withholding exists under Section 48(1)(a).

**9 TE KARAKIA WHAKAMUTUNGA – CLOSING KARAKIA**

Kia whakairia te tapu

Kia wātea ai te ara

Kia turuki whakataha ai

Kia turuki whakataha ai

Hāumi e. Hui e. Tāiki e!

Restrictions are moved aside

So the pathway is clear

To return to every day activities

To return to every day activities

Allied, enriched, unified, and blessed